



Hanukkah Events Schedule

The Hanukkah Musical

Our Torah School students will be traveling back in time to meet Judah Maccabee and learn the true meaning of Hanukkah! Join us on Thursday, December 7 for the first night of lighting the Hanukkah in our Temple Courtyard at 5:45 pm followed by The Hanukkah Musical at 6 pm.

On Friday, December 8 at 6 pm during our Shabbat Service the Adult and Youth Choirs, along with our musical theater class, join us in singing our favorite Hanukkah songs.

On Saturday, December 9 from 3 to 6 pm plan on attending our Hanukkah Happening event, hosted by our very own Price Family Preschool! There will be games, crafts, music, and SNOW, followed by Havdalah, lighting the Hanukkah, and the final performance of the Hanukkah Musical. Food and Drinks available for purchase.

Candle Lighting Schedule

held in our Temple Courtyard on the following dates

- Thursday, December 7 at 5:45 pm
- Friday, December 8 at 5:45 pm
- Saturday, December 9 at 4:45 pm
- Sunday, December 10 (No Lighting at Temple)
- Monday, December 11 at 4:45 pm
- Tuesday, December 12 at 4:45 pm
- Wednesday, December 13 at 4:45 pm
- Thursday, December 14 at 4:45 pm



Friday, December 1
Ugly Sweater Family Shabbat Service 6 pm

Saturday, December 2
Kwanzaa Shabbat Service 10:30 am
Vayishlach, Genesis 32:4-36:43
Hosea 11:7-12:12

Friday, December 8
New Member Shabbat Service 6 pm

Saturday, December 9
Shabbat Service 10:30 am
Vayeishev, Genesis 37:1-40:23
Zechariah 4:1-7

Friday, December 15
Shabbat Service 6 pm

Saturday, December 16
Shabbat Morning Service 10:30 am
Mikeita, Genesis 41:1-44:17
I Kings 3:15-4:1

Friday, December 22
Shabbat Service 6 pm

Saturday, December 23
Shabbat Morning Service 10:30 am
Vayigash, Genesis 44:18-47:27
Ezekiel 37:15-28

Friday, December 29
Shabbat Service 6 pm

Saturday, December 30
Shabbat Morning Service 10:30 am
Vayechi, Genesis 47:28-50:26
I Kings 2:1-12

Happy Hanukkah



From Our Temple President

by Matt Meis

Hillel and Hillel

Have you ever heard the expression, “the Jewish holidays are always either early or they’re late. They’re never when they’re supposed to be.” Well, this year Hanukkah comes a bit early, starting on December 7th, just a few days from now. In the first century CE, Rabbi Shammai taught that we should start Hanukkah with eight candles and remove one each day. How depressing is that! Rabbi Hillel, on the other hand, taught us to start with one candle and add one each day. That’s so much more inspirational and spiritually uplifting.



Hillel is known as a great teacher. We’ve all heard his legendary expression, “If I am not for myself, who will be for me? If I am not for others, what am I?” I believe those words were never more meaningful for us as Jews as they are today with the rise in antisemitism around the world and especially on our college campuses. After founding the school of Tannaim in the first century of the common era, Hillel became a symbol of the pursuit of higher Jewish learning. Fast forward to 1923, when members of the local Jewish and university communities met in a rented loft over a dry cleaner in Champaign Illinois, home to the University of Illinois, and founded The Hillel Foundation. Their mission, to envision a world where every Jewish student is inspired to make an enduring commitment to Jewish life, learning, and Israel.

On today’s college and university campuses across our nation, antisemitism has reached a dangerous level. Our students are hiding in their dorm rooms and classrooms, fearful of being attacked by the large anti-Israel, pro-Palestinian protests happening on college campuses across our country. There is a level of antisemitism the likes of which many of us have never seen in the United States. My daughter attended San Jose State University in the early 2000’s. She was very active at Hillel (and even met her future husband there). Both of my children to this day have a very strong commitment to their Jewish identity and to the Jewish people. I attribute that in large part to the education they both received at our own Temple Emanu-El, and I believe that Hillel Houses on their college campuses (my son at San Francisco State University in the mid 2010’s) played an important part in that also.

Today more than ever, we must support our children in the face of what’s happening all around them at school and on social media. When we send our children out into the world, usually for the first time when they leave home for university, we should be thankful that when they get there they will find a Hillel House to support them and be a place where they can feel safe and feel at home, celebrate Shabbat as well as other Jewish holidays, and engage in acts of tzedakah and tikkun olam.

And so, when you get out your checkbook to write your end of year charitable donations, I implore you to contribute to our Spielman Torah School Scholarship Fund OR Hillel so that our students can attend both here and continue in safety once they get to college. Our children's future, our Jewish community's future, depends on a lifelong attachment to and love of our Jewish heritage, our Jewish faith, and our commitment to raising strong Jewish children to lead us into the next century.

Shaun Speaks...



Shaun Copans,
Executive Director

As we all know, unfortunately, our world is filled with scammers, con artists and crooks. They prey on our collective idea that we want to help someone we know, and tikkum olam, our commitment to making the world a better place.

That said, I wanted to take this time to remind everyone that if you receive an email, text or message appearing to come from either Rabbi Devorah or Rabbi Benj asking for gift cards or money, it is a scam. They will usually say it is needed to help another congregant who is going through an illness or hard times.

We have been made aware that this is happening throughout synagogues, churches, and other houses of worship in San Diego and the country. And, with the holiday season now upon us, there is no doubt it will continue.

Please notify the Temple office if you receive anything from the Temple that you believe is a scam or suspicious.



Temple members who are able to go above and beyond the standard Temple dues requirement enable us to continue our high standard of services and programs for all members, regardless of means. Please consider joining at one of the following levels:



Chai Circle

All levels of Chai Circle and Life Membership will have their names published at High Holy Days and in HaSofer (The Scribe). For more information about our programs, please call the Temple office at (619) 286-2555.

Life Membership



Add Your Strength to Ours!

Below is a list of contacts for committees, projects and other ways to become more involved in the life of Temple EmanuEl. Please reach out to any of these groups to learn more about their work, and how you can become involved.

- **Adult Education** adulted@teesd.org
Rabbi Benj Fried (619) 286-2555
- **Advocacy** advocacy@teesd.org
Barbara Learner
Janice Steinberg
- **Budget and Finance** financecommittee@teesd.org
- **Caring Community** caringcom@teesd.org
Ira Moskowitz (619) 449-2762
- **Endowment** endowment@teesd.org
Bob Rubenstein
- **House & Grounds** housegrounds@teesd.org
Steve Naiman (619) 449-2349
- **Library** office@teesd.org
- **Membership** membership@teesd.org
Amy Blum
- **Mental Health** mentalhealthcom@teesd.org
Marie Raftery
- **Mi Shebeirach Tapestry** tapestry@teesd.org
Claire Fritz
- **Preschool** preschool@teesd.org
- **Publicity** publicity@teesd.org
- **Safety/Security** security@teesd.org
Greg Houska
- **Social Action** socialaction@teesd.org
- **Torah School** thscom@teesd.org
Jane Muschenetz
Patricia Cardozo
- **Women of Reform Judaism** wrij@teesd.org
Nancy Marcus
Barbara Chancy
- **Youth** rabbibenj@teesd.org
Rabbi Benj Fried



Mitzvah of the Month – Blanket Drive Cold and Wet Weather is Coming



Even in sunny San Diego, people suffer from exposure from winter's cold and rain. If you have seen weather predictions for the next few months, you know that this year's need is expected to be greater than usual. In addition to blankets, we welcome sleeping bags, jackets, rain ponchos, umbrellas, gloves, hats and other items to help those in our San Diego community stay warm and dry.

Blankets and other items may be used, but clean and in good condition. They will be given to the Alpha Project and other groups who help those who are unsheltered in the San Diego area. Each week, a different volunteer will pick up from the Temple and deliver. We can still use a few more volunteers. For questions or more information, please contact Leslie Gollub at gollub.leslie@gmail.com.

As we normally do each year, we will collect blankets in December and in January.

Bring your donations to the white barrel in the lobby of the Temple office building, and members of the Committee will deliver them.



Welcome to our Rabbinic Intern

Leah Julian

Of our many blessings at Temple Emanu-El, our newest blessing this year is welcoming our Rabbinic Intern, Leah Julian to our professional team. Rabbi Leah is a 4th year rabbinic student at HUC (Hebrew Union College-Jewish Institute of Religion) on the LA campus - the very same campus that both Rabbi Devorah and Rabbi Benj attended. Rabbi Leah also spent some time studying at the Conservative movement's Ziegler school of Rabbinic studies so she comes to us with a rich, diverse background of rabbinic learning and wisdom.

Rabbinic internships are an important part of the rabbinic learning process for burgeoning rabbis. This is their opportunity to experience rabbi life in a professional setting, to begin working in a rabbinic capacity, to apply the skills and texts they have been learned about in class, and most importantly, to observe and learn with and from their rabbinic mentors at their internship sites. Rabbi Devorah and Rabbi Benj are very proud to have been invited to participate in this important program. Not only will having Rabbi Leah enhance our congregation's programming and rabbinic presence, but it's also a reflection of our community's reputation in our Jewish world as a congregation which is the kind of place where a developing rabbi can learn, grow, and be strengthened - one in which there is stability, vibrancy, creativity, and communal health.

We look forward to our Rabbi Leah weekends and to learning with her and from her as she learns with and from us. Her tentative schedule is December 8-10, January 5-7, February 9-11, March 29-31, April 19-21, and May 17-19. Be sure to introduce yourself and welcome her next time you have the opportunity. Welcome to Temple Emanu-El Rabbi Leah!

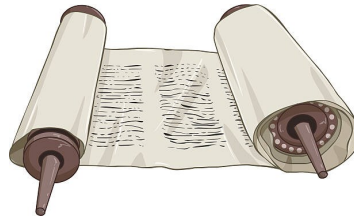
Leah Julian joined our community in November and will work with Temple Emanu-El part time through the end of May.

Originally from Davis, California, Leah grew up in a small and loving Jewish community. After living in Denver and Istanbul, Leah graduated from UC Davis, where she earned a BA in Religious Studies.

Leah is passionate about working with people of all ages to find and cultivate their authentic Jewish selves and helping to build interconnected and resilient sacred communities. She believes deeply in the power of relationships to transform and strengthen and is excited to be in relationship with the incredible people that make up our Temple Emanu-El community. When not studying or "doing Jewish," Leah enjoys crafting, singing, dancing and spending time in nature.



Torah School



- December 3—Torah School 9:00 am (Clubs & Pizza Lunch after TS) 12 pm to 1:15 pm
December 6—Hebrew Online 4 pm—4:45 pm In Person 5:00 pm—5:45 pm
December 7—5:45 pm Hanukkah Candle Lighting—6 pm Hanukkah Musical
December 8—5:45 pm Hanukkah Candle Lighting—6 pm Hanukkah Musical
December 9—3 pm Hanukkah Happening—5:45 pm Hanukkah Candle Lighting—
6 pm Hanukkah Musical
December 10 - Torah School 9:00 am (Clubs & Pizza Lunch after TS) 12 pm to 1:15 pm
December 13—Hebrew Online 4 pm—4:45 pm In Person 5:00 pm—5:45 pm
December 17 - NO Torah School—Winter Break
December 20—NO Hebrew Classes—Winter Break
December 24 - NO Torah School—Winter Break
December 27—NO Hebrew Classes—Winter Break
December 31—NO Torah School—Winter Break

Winter Break from December 17, 2023 through January 5, 2024





Torah for the Table: The Musicals **Wednesday, December 6, 6 pm**

We welcome the return of this popular program, this year presented with a twist - think Jewish learning and music meets culinary school. We will explore musicals, some with obvious Jewish themes, some not so much, created by Jewish composers, lyricists and authors, all with links to Jewish food that matches the locale.

Classes will be held once a month at the Temple on Wednesday evenings, and will be taught by Rabbi Devorah and Barry Lander. The cost is \$36 for an individual class. The series continues through June. To see the full list of dates and to register, please see the Temple website.

A Time to Prepare **The Legacy You Leave** **Sunday, December 10, 2 – 4 pm**

This valuable discussion will help you prepare for end-of-life choices and make your choices known. Rabbi Benj and representatives from End of Life Choices California will lead the conversation, to be held at Temple Emanu-El in person.

The afternoon program will allow us time to consider the legacy we wish to leave behind as we think about trust and planning. Our program in November focused on the medical aspects. Whether or not you attended the prior program, you are welcome to join us.

There is no charge to attend, but advance registration is needed. Please sign up through the Temple website.

A God We Can Believe In **Taught by Rabbi Marty Lawson** **Thursdays, 12:30 – 2 pm, began on November 9** **In person or on Zoom**

Many people no longer believe in the Deity described in the Hebrew Bible, in the Talmud or other Jewish sources. Using the wonderful new book *A God We Can Believe In*, edited by Rabbi Richard Agler and Rabbi Rifat Sonsino, we will explore a wide variety of views as to how to overcome the obstacles to believing in God in the twenty-first century. In brief essays by a number of leading rabbis and scholars, we will discuss our own struggles to find spiritual meaning for our daily lives.

This Adult Ed class is part two of the very well attended class presented last year. Whether or not you came to part one, you are welcome to join in discussion that may bring forward a God "that can be lived with and lived for." Come join the journey!

The six-session class began on November 9 and ends December 21. Class fee is \$36. For questions, you may contact Rabbi Lawson at rabmsl4745@gmail.com. Please register for the class on the Temple website.

Please check your email messages for additional information and other upcoming Adult Ed programs. For questions, contact Rabbi Benj Fried at benjfried@teesd.org



Adult Education



Supporting Lifelong Jewish Learning

by Rabbi Benj Fried

The Jews Encounter Diversity Film Series

Simchas and Sorrows

Saturday, December 16, 7 pm

Temple Sanctuary, In Person



Based on her own experiences, Genevieve Adams wrote, directed and stars in “Simchas and Sorrows” which is a dramedy about intermarriage. Agnes grew up Catholic but is now an atheist. Her fiancé Levi insists that she convert to Judaism to appease his Orthodox parents, particularly since she is expecting a baby. Agnes agrees to take conversion classes led by the trans Rabbi Cohen, with progressive takes on Judaism, Antisemitism, the Holocaust, Israel, and the Palestinians. Nevertheless, she still must navigate the challenges of her relationship with Levi, her new religion, and eventually the December dilemma. Genevieve Adams directed the movie, which was made in the U.S. in 2022

Laurie Baron will introduce the film and facilitate discussion after it is screened.

There will be a bring your own dinner in the Social Hall at 6 pm, before the film.

Torah Study

Saturday mornings—9:00 am In Person and on Zoom

An in-depth study of Torah portions and commentary. Come in person or connect from home.

Zoom links will be provided in the Temple’s weekly emails.

Coffee with the Rabbi

Wednesday mornings, 11 am In person and on Zoom

Drop in when you can for a lively discussion on current events. No registration is needed — just an interest in

Jewish learning. Zoom links for Torah Study and Coffee with the Rabbi will be provided in the Temple’s weekly emails.

Please consider a contribution to the Adult Education Fund to help support the Committee’s efforts to continue to engage speakers and provide the high quality of life-long learning experiences that have become an integral part of Temple Emanu-El. Program costs are continuing to rise, and we need your support.



Israel Engagement—after the Black Sabbath

By Rhonda Amber and Jonathan Licht

The massacre on Israel's border with Gaza on October 7 is being called "השבת שחורה," "Shabbat Shechora," the Black Sabbath. The murder of 1400 Jews by Hamas is the largest mass killing of Jewish people since the Holocaust and will forever be memorialized in our history. The sadistic attack began a war that, as this writing, is consuming thousands of lives and destroying psychological peace for countless others. It has led to the galvanization of Israeli society, which for months had been splintering over the political battle to reject the government's attempt to upend democracy. Now the protest movement, along with the other segments of society, is united in the fight to maintain Israel's existence and return the hostages. Bravery and volunteerism are being demonstrated throughout Israel and the Diaspora.

Another effect of the war has been the revitalization of the Antisemitism hate franchise. Israelis and members of our Jewish communities must vigilantly protect ourselves and each other. It takes ongoing effort to absorb and respond to the language and events that are transpiring.

Shortly after the tragedy, Rabbi Devorah, Temple members and an Israeli from the group UnXeptable met to process thoughts and feelings. It was both emotional and helpful to gather. We continue to engage with Israel. Our next meeting will focus on what is next, after the war.

We will meet in the Temple Library on Monday, December 4, 4:30-6 pm. Please join our community, bring ideas, thoughts to share, a song, plans and hope.

For questions or to RSVP, please contact us at rjamber2011@gmail.com



Drum Circle December 26, 3 pm

Hello drummers!

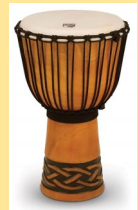
Our December Drum Circle will be held on Tuesday, December 26 from 3-4 pm, led by Leanne Pearl. If the weather permits, we can drum in the courtyard at Temple Emanu-El under blue skies, a cool breeze and birds singing above. Otherwise, we will drum inside the Temple.

Feel free to invite a friend. There are drums to share and a \$10 gratuity for Leanne's instruction.

Come and share your own rhythms, pick up new ones, leave your "to do" list at home and just be in the moment.



For any questions, please contact Bonnie Baron at bonniebaron@gmail.com



Happy Hanukkah to everyone!

I moved to San Diego twenty-five years ago from the San Fernando Valley. I had just gotten out of a psychiatric hospital. I didn't belong to a temple and Hanukkah was fast approaching. Where was my menorah? I needed Hanukkah candles. I thought I would just go into the nearest grocery and get what I needed. I was surprised! I had to go to three stores to get what I needed. My son was eight years old, and I needed to find a synagogue for his Hebrew School. I found Temple Emanu-El for his lessons and a sanctuary for me to have a sense of belonging.

That being said, I also needed support for my mental health. My therapist referred me to Recovery International (RI). I was afraid to join any congregation because of the stigma of sharing that I had a mental health diagnosis. I was a mental health advocate, but I couldn't share my story where I worshiped. I knew that would take courage.

Years later, after Rabbi Devorah came to Temple Emanu-El, I made an appointment with her. She was kind, loving, and understanding. She asked me what I needed. I told her I would like to have a Recovery International meeting where I worship. We planned, decided and opened an RI meeting at our temple five years ago. When the pandemic began, we needed to suspend our in-person meeting. When it was safe, we reopened our RI meetings at the Temple.

All are welcome. You don't need a diagnosis to attend. We don't talk about big things in our meetings; we only talk about small things in our lives, like traffic, waiting for a phone call, after someone says they will call you right back, you can't find or lose an email after it's all typed up. We don't give advice. We use tools on how to lead a peaceful life with a method that has been around for over 85 years. Dr. Abraham Low founded recovery International in 1937 in Chicago. His work spread to San Diego in 1955.

We meet every Thursday in the Temple Library in person at 10 am.

Welcome to Recovery International meets on Tuesdays at 6 pm on Zoom.

We offer an LGBTQ+ meeting on Mondays at 6 pm on Zoom.

We are also happy to announce that the Recovery International 2024 Conference will be held in San Diego in February.

If you need more information, please see our website: recoveryinternational.org. You may reach me by email at SanDiego@recoveryinternational.org or by calling our San Diego office at (619) 383-2084.

Jewish Family Service Programs at Temple Emanu-El

Activities, exercise classes and special events are held through the Aging and Wellness Program of Jewish Family Service for those age 60 and over at Temple Emanu-El. The College Avenue Center is open Monday through Friday, 10:15 am—1 pm. Lunch is available each weekday. The suggested donation for seniors is \$4 per person, or \$7 per person for all others.

Most activities are available at no charge. To reserve your place for classes, please call (858) 637-3725.

Programs in December include:

Mondays at 10:30 am — Trivia (engages participants with thought-provoking trivia questions)

Tuesdays at 10:15 am — Tai Chi (learn the techniques, postures, and movements of Tai Chi)

Tuesdays at 10:30 am — Current Events (engages discussions about recent national events)

Wednesdays at 10:30 am — CAC Fitness (a series of body-weight exercises)

Thursdays at 10:30 am — Wellness Day (wellness presentations, art, special events)

Fridays at 10:15 am — Cantantes Latinos (music, singing, and fun)

Staying for lunch? Please reserve your meal in advance by calling 858-637-7320



Community Corner

Grief, Growth and Grit

by Gail Braverman, M.A., LMFT, and Temple Board Member

Let me start by saying grief is hard. It can throw us into chaos, drop us into the pit of darkness, and unhinge our lives.

Rather than focusing solely on grief symptoms, I have chosen to focus on what I see as the overall process of grief and the road it takes us on over time.

I won't use the words healing or recovery, for I respect the ongoing significance of grief and the role it plays throughout our lives.

We don't necessarily "get over" or "move on" from a loss. We learn to live with and integrate it into our lives. Over time, the intensity of the emotions decrease, but the hole it leaves is forever.

I am not a researcher, but I am an observer of people. What I have observed in my personal and professional life is there are phases we go through with grief. They aren't linear because grief isn't neat and orderly. I refer to these phases as grief, growth and grit.

Grief affects us physically, emotionally, mentally, socially, spiritually, and impacts our behavior. You have rights as a griever to experience your own unique grief, to talk about your grief, to feel all your emotions, and to be tolerant of your physical and emotional limits. You will be compromised.

Coping with the ups and downs of grief is part of the growth process. The impact of the death of someone is influenced by the role the person played in your life, the type of relationship you had with the deceased, how much a part of your daily routine the person was, and the importance you placed on the person.

Words like perseverance, hardiness, resilience, tenacity and commitment come to mind when we think about grit. We develop grit as we learn to tolerate our emotions, continue or develop healthy habits like exercise, support from others, structure our days, and knowing what we can and cannot participate in.

Ellen Bass in her poem "The Thing is" says:

*The thing is to love life, to love it even
when you have no stomach for it...*

Reflection: There may not be a happy ending, but there will be new beginnings.

Today's Practice: Remember that you aren't moving on after a loss, you are moving forward as you integrate that loss in your life.

[Comments are welcomed: gbrave3333@aol.com](mailto:gbrave3333@aol.com)



Contributions

Contributions received after the first of the month will be published in the next month's bulletin.

Commemorate a life cycle event or remember a loved one with a donation to one of the Temple's specially designated funds.

Thank
you

Mazal Tov

To Scott and Elana Levens Craig on the engagement of their son, Daniel Levens-Lowery, to Dharti Tarapara

TODAH RABAH

To Barbara Pollack for her work on editing the bulletin

YASHAR KOACH

To Fern Siegel on being selected as this year's recipient of the Linda Janon Behavioral Health Champion Award from Jewish Family Service of San Diego

Condolences

To Adam and Erica Whinston on the death of Adam's father,

Eric Whinston

To Charlie and Michelle Jirkovsky on the death of Charlie's father,

Tom Jirkovsky



To Barry Benn on the death of his wife,

Gayle Benn

To John and Carrie Mayers on the death of John's mother, grandmother of Nate, Charlie and Sammi Mayers,

Janet Rose Mayers

To Stefani Lenett and Sam and Zach Lenett on the death of Stefani's stepfather and Sam and Zach's grandfather,

Mark Friedman



YAHREZIT OBSERVANCE

Zecher Tzadik Livoracha – The Memory of the Righteous is a Blessing

The following yahrzeits will be commemorated at Shabbat services:

December 1 & 2	December 8 & 9	December 15 & 16	December 22 & 23	December 29 & 30
Rifat Badi	Leah Capps	Sidney Berneger	Max Adelman	Tessie Ast
*Miriam Bauer	Izzie Chanin	Rochelle Calvin	Sarah Desser	*Harry Berman
*Stuart Cohen	Jack Eviden	*Cindy Dodge	Ruth Kantor	Diane Sayne
*Jack Lawson	Betty Gallagher	Harry Dresnin	Chester Kossman	Pearl Gelb
Alexander Degan	Celia Linares	Diane Levin	Karen Tolley	*Regina Katz
Rae Goldberg	Timi Lubin	Morris Niss	*Shirley Tolley	*Ben Saltz
Marcia Cohen	Bertha Newman	Max Patashnik	Leon Unger	Joseph Frank Aiello
Walter Loewenstein	Bessie Rosenberg	Ricky Handler	Rose Cherns	Isaac Feingold
Samuel Mason	Sylvia Karzen	David Siegel	*David Feinman	Helen Held
Fred Scheure	Hersh Weitzman	Sam Tepper	Sarah Meyer	*Bernard Lipinsky
Betty Lias	Hyman Cherns	*Alice Cohn	Elayne Moskowitz	Allen Seidman
Rowena Lupi	Al Golman	*Toni Glasner	Rabbi Harold Schulweis	Sylvia Wortman
*Ernest Charles Nathan	Irving Myron Maltzman	Sylvia Gold	Harold Stengel	Ida Adler
Eleanor Schwartz	Beryl Della Schneider	Rose Altman	Patricia Brose	*Tanchum Ben-Yehuda
*Elaine Treisman	Theresa Esarco	Julius Brown	Helen Ferer	Manny Gold
*Ruth Bodian	*Frieda Linker	Sevia Finkelstein	Sandra Finkelstein	Lorraine Levine
*Samuel Lenett	Fran Sandler	*Adele Greene Gordon	*Alan Geist	Sylvia Lurie
Joshua Morrison	Claralee Scheinin	Lillian Maltzman	Frieda Kreiger	Mildred Reff
Corrine Moss	Frank Burney	Harold Oolie	Nancy McIntyre	Richard Alvarez
Harvey Seiden	Nina Fox	Morris Kipp	George Mendel	June Reh
Frank Tishkoff	*Harry Kirschbaum	Naomi Stiller	*Benjamin Rief	Steve Lipson
Irving Aist	Marian Scharfman	*Jerry Blank	*Goldie Socher	Barney Pearl
Fannie Blumenfeld	Gordon Van Huizen	Thomas G. Bockes	Emily Steres	Sally Sacks
Sarah Hannah Goldberg	Samuel Wagner	Pearl Dries	Minna Enselberg	Marvin Jay Boskin
Sol Goldstein	Janice Aron	*Willie Katz	Marty Lyon	David Hamovitch
Joan Jacobs	Richard Berman	Betty Salberg Nathanson	Philip Schwartz	Abraham Levine
Phyllis Bertschi	*Paul Hartman	David Okrent	Marian Somers	Martin Spagat
*Rose Chawkin	*Harold Iglow	Rose Tepper	Edna Weiner	Rubin Wasserman
Cecelia Gold	Tsippy Feinstein	*Joseph Brewster	Richard DiCov	*Edith Derezin
Gary Jacobs	Muriel Finkelstein	Emily Dashevsky	Rabbi Rafael Goldstein	Mary Fine
Mark Raboy	*Harold Goldberg	Jeanette Jacobson	*Robert Kipnis	Armand Offel
Arthur Sacks	Marlene Herzig	Robert Lawrence	Ruth Pinter	Leon Roy Schultz
Leslie Siegel	*Deborah Gail Lewitt	Ida Pearl	*Bessie Satlof	Ted Brav
John Evans Blackmar	Sarah Rosenberg	Esther Stengel	Grace Schwarz	*Fred Goodman
Louis Fleetwood, III	Claire Satlof	Catherine Ragan	Mildred Firestone	Rita Grady
*Regina Fried	Ronald Silverman	Allan Cohen	*Hyman Kornfeld	Ran Hettena
Martin Greenman	Rita Sultan	Sydney Gevertz	Richard Morse	Dorothy Lincoln
Marcia Holtzman	Florence Lucille Tokar	*Jean Naiman	*Clara Richman	Ruth Margaretten Mendel
Leonard Pinter	Doris Waldman	Elizabeth Sherman	Gwen Schoenfeld	Debbie Simon
Isadore Shapiro			Bella Schwartz	
Batia Simchon			Donald Snipper	
Edmond Frank			Stanley Cooper	
Jeff Hicks			William Fayerman	
Esther Shapiro			Carl Fraser	
Jean Scott			Marion Goldman	
			Rose Greenberg	
			Mitchell Lesko	
			Ester Sachs	
			Abraham Shapiro	



* designates a memorial plaque in the Sanctuary lobby



In Our Temple Emanu-El Family

DECEMBER BIRTHDAYS

12/1	Paula Papas	12/10	Jonah Breslow	12/17	Zachary Lenett	12/26	Anne Stein
12/2	Gail Braverman		Angela Canin		Felix Ponomarenko	12/27	Jerry Chancy
	Daniel Fefferman		Donna Lopez	12/18	Rebecca Bierman		Neal Cowen
	Norman Lurie		Lisa Stein		Rica Cherrick		David Graham
12/3	Leah Feinberg	12/11	Amnon Ben-Yehuda		Leah Cooper		Adie Mestman
	Jessica Kort		Juan Pablo Cuevas		Marti Glovinsky	12/28	Rachael Cherrick
	Lynne Sloane		Carol Korfin		Charles Handler		Cindy Harris
12/4	Lucas Ambrose		Malcolm Lange		Eleanor Kipperman		Charles Mayers
	Laura Alexander		Stan Mestman		Marie Raftery		Jarrah Newman
12/5	Charlie Canin		Melisa Heller		Mikayla Hazell		Erika Rosen
	Daniel Levens	12/12	Amy Spintman	12/19	Mackenzie Blum-Hopgood		JoAnn Silkes
	Marc Regier		Michelle Fischthal		Liane Dyson	12/29	Betsy Baranov
	Kobe Schuster		Levi Ghitman	12/20	Rhonda Amber		Sebastian Eickholt
	Jacob Zubkoff		Lane Mashal		Netta Clavell		Jordan Schuster
12/6	Lesley Coe		Ryan Ogle	12/21	Carolyn Morris	12/30	Cody Brown
	Aleah Cohen		Elijah Rosen		Gordon Hoopie		Elise Brown
	Gregory Cohen		Jared Sarvis		Richard Thiele		Sue Goldstein
	Sarah Handler	12/13	Mark Spiegler		Samantha Tichonchuk		Evan Hettena
	Bob Sablove		Scott Hopgood	12/22	Audrey Brenis		Heather Muns-Socol
	Adam Mark	12/14	Alex Ferre		Norma Erth		Ilene Silvers
12/7	Rachel Rosenzweig		Michael Huot	12/23	Daphne Gaghagen		Daria Linvill
	Robert Smith	12/15	Moriah Nissan		Molly Cooper	12/31	Cassandra Beal
	Sonia Snyder		Vanessa Barnik		Jeffrey Herman		Desiree Benet-Saran
12/8	Polly Dong	12/16	Dov Fox		Gabrielle Huot		Jason Carver
	River Perino		Thomas Fell	12/24	Aleisha Burton		Maxwell Farber
12/9	Rosalyn Hegler		Skot Golden-Needham		Kathleen Colbert		Joseph McClung
	Aimee Le	12/17	Barbie Graham	12/25	Carl Watz		Ira Moskowitz
	Jocelyne Okrent		Adeline Jacob		Mark Spiegler		Cathy Sigismonti
	Mike Schuster		Ron Berg	12/26	Bernie Blotner		
			Nina Brenis		Jessica Harris		
			Barbara Learner		Randy Silverstein		

DECEMBER ANNIVERSARIES

12/1	Benjamin and Jennifer Stone	12/17	Itzik and Sandy Rief	12/25	Alan and Nancy Spector
12/5	Aaron Moore and Melissa Spadin		David and Elaine Saville	12/26	Larry and Hennie Krasnow
	Harry and Janet Zanville	12/19	Steve and Sherry Saltzman		Nate and Lisa Stein
12/6	Eric and Rishona French	12/20	Stan and Adie Mestman	12/27	Oren and Amy Patashnik
12/13	Jim and Linda Timlin	12/24	Paul Hartwell and Malissa Winicki	12/28	Nick Comer and Patricia Cardozo
12/14	Andrew and Beth Friedenberg		Matthew Murphy and Megan Maher		Matt and Barbara Meis
12/17	George and Susan Kaplan	12/25	Stewart and Terri Roseman	12/31	Bernie and Heidi Blotner
	Benjamin and Olga Mandel				



Claire Handler Gift Shop

Our Temple gift shop has a wonderful variety of items for Hanukkah, including hanukkiyah, dreidels, dripless candles, cooking kits and more. Whether you are looking for something new to enhance your enjoyment of the holiday or something to express appreciation to your host, we have the perfect item. Remember that the first candle is Thursday evening, December 7.

Our gift shop is only open when our Temple Office is open during the week. We are looking for a few volunteers with a little free time to help. Training will be provided and the schedule can be tailored to fit your needs. For questions, contact Natalie Fritz in the Temple office at office@teesd.org.



Kwanzaa Shabbat A Celebration of Kwanzaa and Hanukkah Saturday, December 2, 10:30 am

Did you know that both the American Jewish community and the African American community have traditions of candle lighting at this season of the year? The Adult Ed Committee invites you to this special event in the Temple Social Hall as we:

Learn

We will learn about the origins and history of Kwanzaa in the African American community and its cultural role. Rabbi Benj will teach the Kwanzaa values written in the Torah, and Barrett Holman Leak will explore the shared history of Kwanzaa. Together we will see the shared legacies of the Black and Jewish communities.

Celebrate

We will celebrate, which is a mandatory part of Kwanzaa, not only faith, but joy and resilience. Both the Black and Jewish communities know what it is to be marginalized, oppressed and in need of resilience.

Lunch will be available following the Kwanzaa Shabbat at **12 pm for \$18 Adults and \$10 for children**. Children ages 3 and under are free. Reservations are needed using the link on the Temple website.

For any questions, please contact Rabbi Benj at benjfried@teesd.org.



Women of Temple Emanu-El

by Barbara Chancy and Nancy Marcus, Co-Presidents



This month, we are looking forward to our annual Hanukkah Bingo Night. Plan to join us on Wednesday, December 13 at 6:30 pm as we light the 7th candle. We will have latkes with sour cream and applesauce and enjoy sufganiyot (jelly donuts) for dessert. This is not a dinner! After our tasting, we will play Hanukkah Bingo and play the Left Right Game. For the Left Right Game, bring a wrapped gift valued at \$10.00 or more. Bring something fun and be surprised with what you win! The cost of the evening is \$10.00 per person, which helps cover the cost of Security and Bingo prizes.

In January, we are planning a Tu B'Shevat Seder. Join us as we learn about the four worlds of trees and fruits. This is a very fun night. Save the date – Wednesday, January 24, 6:30 pm.

In February we look forward to a Craft Night. Details to follow!

For questions, please reach out to us at wrj@teesd.org.

Thank you to our A Team (Amazing and Awesome): Pat Libby, Barbara Braasch and Beth Mann, who did such an incredible job of chairing this year's annual Artisan Festival on November 5. The Artisans were terrific, and there was an impressive array of merchandise. Thank you all who came and shopped! We were tired, but it was a wonderful day!

A Little History of WRJ

Why were women's groups formed and why do they still exist? In 1913, when National Federation of Temple Sisterhoods (NFTS) was first chartered, women did not have the right to vote. All Rabbis were men. All Cantors were men. Women needed to become secretaries or teachers if they worked. A woman was expected to get married and become a housewife. What changed? World War I and World War II took men away from home. Women had to work to support their families. They needed to earn money to pay rent, buy food and clothes and more. There were children to be cared for. When the men came back from war, roles had changed, Women were used to earning money and making decisions. This fractured many households. New pathways were forged for women.

One of the areas that women could help in was the Temple. Women learned to organize, plan and execute successful programs. Sisterhood became the backbone of women's movements. It was here that women learned skills to harness their power and rose in Temple leadership. They sat on Temple Boards and even became Temple Presidents. In the 1970s, women were ordained as Rabbis. Women became Cantors. The Reform world had changed.

Why do women belong to Sisterhoods today? Because we believe in the power of our voices to effect change, to challenge injustice and to fight for those who cannot fight for themselves. We are stronger together!





Helping to Repair the World

Your generous donations to Temple Emanu-El's Social Action Fund are used to serve the needs of the community, locally, nationally and internationally.

In November, funds were sent to STEP: Support the Enlisted Project (teamstepusa.org), which began in 2012 and works to build financial self-sufficiency among active duty enlisted members, veterans and their families facing financial crises through counseling, education and grants. Through their emergency financial assistance program, they have served more than 5,600 families who were at risk of losing housing, utilities, transportation, and have consistently run out of essentials, such as food, before their next paycheck arrives. More than 90% of those who have worked with their advisors have not needed to return for additional assistance.

In December, we will allocate money to Direct Relief (directrelief.org), which provides emergency medical assistance and disaster relief in the United States and internationally. Their work began immediately following World War II, sending thousands of relief parcels with food, clothing and medicine to those rebuilding their lives. Today they are active in poor communities to equip health professionals to care for those in need, and respond efficiently and swiftly to national and global emergencies. They work with local partners to provide medical aid following hurricanes, earthquakes, wildfires, and provide mobile units in underserved communities.

The Social Action Committee carefully screens all recipients to make sure money you donate to the Social Action Fund to continue the work of tikkun olam is spent wisely. We appreciate your donations, large or small, to help with this work.

Safety/Security Committee

By Greg Houska, *Safety/Security Committee Chair*

Firearms Safety

To begin with a question: Is this an odd subject for our Temple Ha-Sofer newsletter? I will answer no. Gun safety is an important topic. The number of firearms in American households is estimated at approximately 466 million. No matter your personal views on gun ownership, it is important to understand basic gun safety rules concerning the responsibility of owning and handling a firearm:

- assume that all guns are loaded, even after removing the bullets or magazine
- always keep your firearm in a locked safe or affixed with a trigger lock when not in use
- store and transport ammunition separate from the firearm
- always keep your finger off of the trigger unless on target
- be sure of your target and what is beyond it
- never point a firearm at anything unless you are willing to destroy it

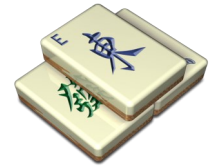
I would suggest that those of you who do own a firearm, or are considering doing so, take a gun safety course offered by a licensed firearms instructor. I am a fan of "Guns N Moses" which is committed to training Jews in gun safety and self defense. Other than personal expenses, there is no charge for their training.

There are other considerations related to owning and handling a firearm and I am always open to questions. You may reach me at security@teesd.org.





Mah Jongg Mondays, 1:30 – 4 pm Women of Temple Emanu-El



Are you looking to play Mah Jongg with a wonderful group at the Temple? Have you wanted to learn to play but never had the time or the teachers? Did you play years ago but your skills may be rusty?

The Women of Temple Emanu-El have organized an ongoing weekly game, open to everyone. There are lessons for those who have never played or haven't played recently, and regular games for those more experienced. We have a lot of fun, and it's a great way to meet more people.

The cost is \$10 per month, which includes snacks. If you don't have a current card, the 2023 Mah Jongg card is available for \$15. To sign up or for any questions, please contact Nancy Marcus at wrj@teesd.org or call her at (714) 585-7858.

Governor Newsom Strengthens California's Gun Safety Laws

by Dana Quittner, Advocacy Committee Member

Gun violence has become the leading cause of death for children in the United States. This is one reason that gun violence prevention is one of our Advocacy Committee priorities.

The hopeful news is that gun safety laws work. Because of existing California laws, our state's gun death rate is 43% lower than the rest of the nation.

Our outstanding partner organization, San Diegans for Gun Violence Prevention (sd4gvp.org) announced that Governor Newsom signed several bills that make California's gun safety laws even more effective. The over 20 new measures include:

- ◆ strengthening the state's public carry regulations.
- ◆ requiring microstamping on handgun cartridges to help trace guns used in crimes.
- ◆ keeping guns away from potentially dangerous individuals.
- ◆ enacting a first-in-the-nation effort to generate \$160 million annually on the sale of bullets to improve school safety and gun violence intervention programs.
- ◆ updating the definition of a firearm to include ghost gun parts.
- ◆ strengthening the process for removing firearms from people who are prohibited from owning them.



**We'd love to share your
simcha!**

Do you have an engagement, a wedding or a new baby in your family? Share your happiness with the congregation! Please email the information to publicity@teesd.org to be included in an upcoming bulletin.

In our Sanctuary there are two special and always visible means of acknowledging those we wish to honor and those we wish to remember: Leaves on the Tree of Life and Plaques on the Memorial Board. In addition, the Temple has cemetery plots for sale in the Mt. Sinai II lawn at El Camino Memorial Park. For more information please call the office at 619-286-2555.



CARS

Temple Emanu-El has signed on as a partner of CARS, a nonprofit organization that takes donated vehicles and returns 80% of the proceeds to the organization of the donor's choice. CARS was founded in 2003 and has donated millions of dollars to nonprofits across the country.

The process is simple: log on to careasy.com and follow the three easy steps. You can select Temple Emanu-El as your nonprofit of choice, provide the information about your vehicle and arrange for CARS to pick up at your office or home. They will work around your schedule and take care of all the paperwork. There is no cost to the donor and donations are tax deductible.

If you or someone you know has a vehicle they would like to donate, visit careasy.org to learn more about the process or contact anyone at the Temple office for assistance.

Thanks for your support.



988 SUICIDE PREVENTION HOTLINE

988 is the new three digit code to route callers to the National Suicide Prevention Lifeline for support 24 hours a day, 7 days a week. Please remember this number if you or someone you know is in crisis. There is no charge. Call or text 988, or chat at 988lifeline.org from anywhere in the country.

Morgan Stanley



Phil Bresnick

Financial Planning Specialist
Senior Vice President | Financial Advisor
5464 Grossmont Center Drive, Suite 200
La Mesa, CA 91942

619-668-4334

philip.bresnick@morganstanley.com

www.morganstanleyfa.com/bresnickbresnick
CA Insurance Lic. #0A05261 / NMLS #14-01662

© 2021 Morgan Stanley Smith Barney LLC. Member SIPC.
BC007 CRC 3881411 10/21



DIAMONDS ♦ GEMS ♦ FINE JEWELRY ♦ CUSTOM DESIGN



MATT MEIS
FINE CUSTOM JEWELRY

SPECIALIZING IN CUSTOM DESIGN
WEDDING, ANNIVERSARY AND
SPECIAL OCCASION FINE JEWELRY
AND JEWELRY REPAIR



BY APPOINTMENT
IN THE CONVENIENCE
OF YOUR HOME OR OFFICE

(619) 218-1319 ♦ mattmeis.com ♦ matt@mattmeis.com



Proudly Serving Jewish Families For
Over 46 Years

Am Israel Mortuary
San Diego's "Only" Jewish Mortuary
Family Owned and Operated
For Three Generations

619-583-8850

www.AmIsraelMortuary.com

LGC

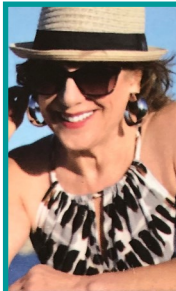
**LINCOLN
GUSTAFSON
& CERCOS, LLP**

Thomas J. Lincoln
Attorney at Law
tlincoln@lgclawoffice.com

California
(619) 233-1150
550 West C Street
Ste # 1400
San Diego, CA 92101

Nevada
(702) 257-1997
3960 Howard Hughes Parkway
Ste # 200
Las Vegas, NV 89169

Arizona
(602) 606-5735
2415 E. Camelback Rd.
Ste # 700
Phoenix, AZ 85016



8504 La Mesa Blvd
La Mesa • CA • 91942

Judefoxrealtor@gmail.com
DRE #01970577



Jude
Fox

Realtor/Property Manager/Notary

619.861.8852

HA-SOFER • THE SCRIBE

is published monthly by Temple Emanu-El

6299 Capri Drive • San Diego, CA 92120

BULLETIN DEADLINES

December 5 for the January issue

January 5 for the February issue

Gail L. Braverman, MA, MFT
Individual, Couples and Family Counseling

License #35281

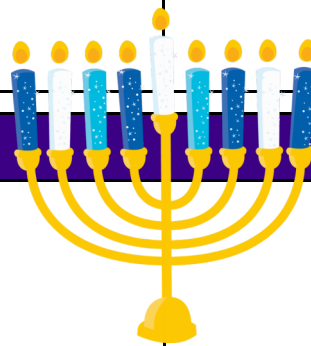
5100 Marlborough Drive
San Diego, California 92116

(619) 282-4730



December 2023 Kislev—Tevet 5784

SUNDAY	MONDAY	TUESDAY	WEDNESDAY	THURSDAY	FRIDAY	SATURDAY
					Dec. 1 • 18 Kislev	Dec. 2 • 19 Kislev
					Ugly Sweater Family Shabbat Service 6 pm	Torah Study 9 am Kwanzaa Shabbat Service 10:30 am Adult Ed-Kwanzaa Program 12 pm
Dec. 3 • 20 Kislev	Dec. 4 • 21 Kislev	Dec. 5 • 22 Kislev	Dec. 6 • 23 Kislev	Dec. 7 • 24 Kislev	Dec. 8 • 25 Kislev	Dec. 9 • 26 Kislev
Torah School 9 am Intro to Judaism 10 am Adult B'Nai Mitzvah Class 2 pm	Mah Jongg 1:30 Israel Engagement 4:30 pm	Community Jewish High 6 pm	Coffee with the Rabbi 11 am Torah Hebrew Classes 4 pm & 5 pm Musical Rehearsal 4:30 pm Torah for the Table 6:30 pm	Hanukkah Bridge with Benj 12:30 pm A God We Can Believe In 12:30 pm Hanukkah Lighting 5:45 pm Hanukkah Musical 6 pm	Hanukkah Lighting 5:45 pm New Member Shabbat Service 6 pm	Torah Study 9 am Shabbat Service 10:30 am Hanukkah Happening 3 pm Hanukkah Lighting 4:45 pm Hanukkah Musical 6 pm
Dec. 10 • 27 Kislev	Dec. 11 • 28 Kislev	Dec. 12 • 29 Kislev	Dec. 13 • 1 Tevet	Dec. 14 • 2 Tevet	Dec. 15 • 3 Tevet	Dec. 16 • 4 Tevet
Hanukkah Torah School 9 am Intro to Judaism 10 am Time to Prepare Class 2 pm NO Adult B'Nai Mitzvah Class	Hanukkah Mah Jongg 1:30 Hanukkah Lighting 4:45 pm	Hanukkah Hanukkah Lighting 4:45 pm Community Jewish High 6 pm	Hanukkah Coffee with the Rabbi 11 am Torah Hebrew Classes 4 pm & 5 pm Hanukkah Lighting 4:45 pm WTEESD Hanukkah Party 6:30 pm	Hanukkah Bridge with Benj 12:30 pm A God We Can Believe In 12:30 pm No Youth or Adult Choir Practice Hanukkah Lighting 4:45 pm	Preschool Closes at 1 pm Shabbat Service 6 pm	Torah Study 9 am Shabbat Service 10:30 am Adult Ed—Movie 7 pm
Dec. 17 • 5 Tevet	Dec. 18 • 6 Tevet	Dec. 19 • 7 Tevet	Dec. 20 • 8 Tevet	Dec. 21 • 9 Tevet	Dec. 22 • 10 Tevet	Dec. 23 • 11 Tevet
NO Torah School Intro to Judaism 10 am NO Adult B'Nai Mitzvah Class	Mah Jongg 1:30 Preschool Winter Camp (Through 12/22)	NO Community Jewish High	Coffee with the Rabbi 11 am NO Torah Hebrew Classes	Bridge with Benj 12:30 pm A God We Can Believe In 12:30 pm Youth Choir 5 pm Adult Choir 6 pm	Shabbat Service 6 pm	Torah Study 9 am Shabbat Service 10:30 am
Dec. 24 • 12 Tevet	Dec. 25 • 13 Tevet	Dec. 26 • 14 Tevet	Dec. 27 • 15 Tevet	Dec. 28 • 16 Tevet	Dec. 29 • 17 Tevet	Dec. 30 • 18 Tevet
NO Torah School Intro to Judaism 10 am NO Adult B'Nai Mitzvah Class	Office/Preschool Closed Preschool Winter Break (Through 12/24) NO Mah Jongg	Drum Circle 3 pm NO Community Jewish High	Coffee with the Rabbi 11 am NO Torah Hebrew Classes	Bridge with Benj 12:30 pm No Youth or Adult Choir	Shabbat Service 6 pm	Torah Study 9 am Shabbat Service 10:30 am
Dec. 31 • 19 Tevet						
NEW YEARS EVE NO Torah School Intro to Judaism 10 am NO Adult B'Nai Mitzvah Class						



President
1st Vice Pres
Treasurer
Financial Sec/2nd VP
Recording Secretary
Immed. Past Pres
Immed. Past Pres
Executive Past Pres

Matt Meis
Stefani Lenett
Jeff Schindler
Barbara Braasch
Alec Irwin
Marc Glazer
Cathi Marx
Eric Rosenzweig

president@teesd.org
lenettlaw@gmail.com
jmrinc@cox.net
braasch14@yahoo.com
Irwin.alec.s@gmail.com
a1witz@cox.net
cathimarx@cox.net
ej.rosenzweig@gmail.com

Senior Rabbi
Associate Rabbi
Executive Director
Rabbi Emeritus
Founding Rabbi
Preschool Director
Webmaster
Bulletin Contact

Devorah Marcus
Benj Fried
Shaun Copans
Martin S. Lawson
Morton J. Cohn z"l
Janet Arkin
Alec Irwin
Publicity Committee

rabbi@teesd.org
rabbibenj@teesd.org
scopans@teesd.org
rabmsl4745@gmail.com
jarkin@teesd.org
Irwin.alec.s@gmail.com
publicity@teesd.org

