

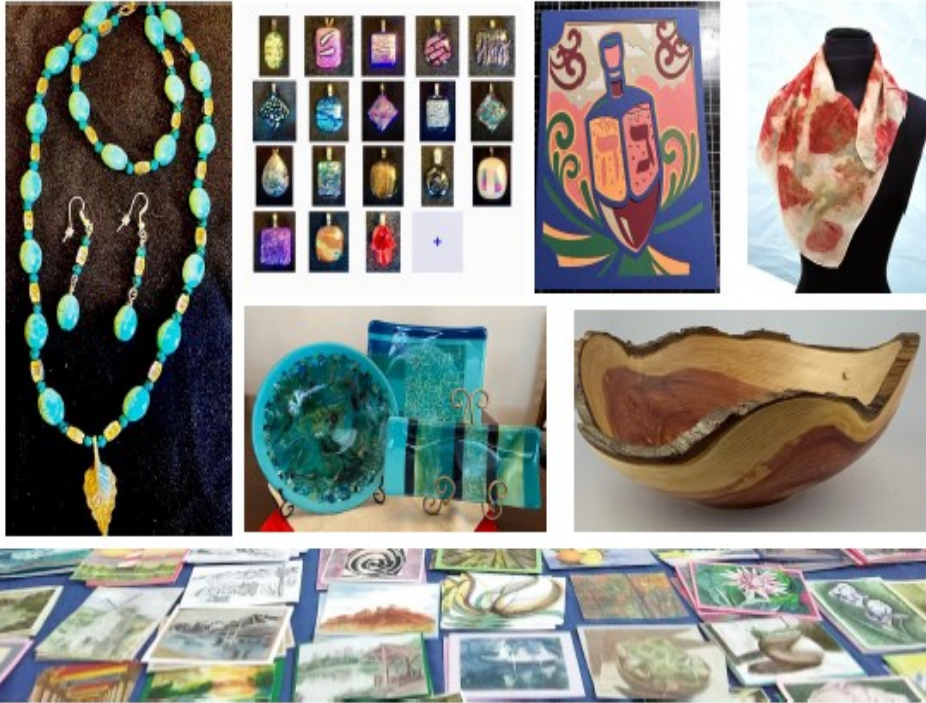


# HA-SOFER THE SCRIBE

Tishrei—Cheshvan 5785

November 2024

TEMPLE EMANU-EL • 6299 CAPRI DRIVE, SAN DIEGO, CA 92120-4632 • (619) 286-2555 •



## Artisan Festival

Sunday, November 3rd

9am - 3pm | Temple Emanu-El

Shop locally made artisan pottery, jewelry, woodwork, glass, and more!  
Join us for an OPPORTUNITY DRAWING at 2:30pm for a chance to win art, gift cards, and services generously donated by the artisans and friends in the community.

For more info, email: [WRJ@teesd.org](mailto:WRJ@teesd.org)

### Need Channukah Supplies?

Stop by the Sisterhood's Channukah Shop to find candles, dreidels, decorations, gelt, and more!

- Friday, November 1**  
Dia De Los Muertos Family Shabbat Service 6 pm
- Saturday, November 2**  
Shabbat Morning Service 10:30 am  
Noach, Genesis 6:9-11:32  
Isaiah 54:1-55:5
- Friday, November 8**  
Shabbat Service 6 pm
- Saturday, November 9**  
Shabbat Service 10:30 am  
**Bar Mitzvah**  
Lech L'cha, Genesis 12:1-17:27  
Isaiah 40:27-41:16
- Friday, November 15**  
SanETY Shabbat Service 6 pm
- Saturday, November 16**  
Shabbat Morning Service 10:30 am  
**Bar Mitzvah**  
Vayeira, Genesis 18:1-22:24  
II Kings 4:1-37
- Friday, November 22**  
Band Shabbat Service 6 pm
- Saturday, November 23**  
Shabbat Morning Service 10:30 am  
Chayei Sarah, Genesis 23:1-25:18  
I Kings 1:1-31
- Friday, November 29**  
Shabbat Service 6 pm
- Saturday, November 30**  
Shabbat Morning Service 10:30 am  
Tol'dot, Genesis 25:19-28:9  
Malachi 1:1-2:7



## Shaun Speaks...



Shaun Copans,  
Executive Director

A few months ago, we introduced the rebrand of our website – [teesd.org](http://teesd.org). Since that time, we hope that you have found the site more user-friendly, visually appealing, fresh and modern.

One important item I wanted to mention, over the past many years, we have not dedicated enough resources to the website and our events calendar and overall content were slow to change. We recognize this made it difficult for our congregants and guests to obtain information about upcoming services and programs. We are now committed to making this a priority!

We encourage you to check our website main page highlighting upcoming events often. Our goal is for our calendar to be updated much more frequently. We want all visitors to the site to trust and rely on the information.

Additionally, we want your thoughts. If you have any suggestions, comments, constructive feedback or want to tell us how fabulous the new site is, please call or email me. Please don't be shy and thank you for your input.



## Janet Arkin Preschool Director

Fall is upon us, and we've settled into the rhythm of the school year after the excitement of the High Holy Days. Together, we shared the sweetness of apples dipped in honey to welcome a sweet new year, enjoyed snacks under the Sukkah, and made a special visit to the Sanctuary to admire our Torah up close.

It's always heartwarming to witness the social and emotional growth that takes place in these early days. Already, we've seen the children grow in independence and begin to cultivate a deep sense of community within their classrooms and throughout our school.

As Thanksgiving approaches, it's the perfect moment to give thanks. On behalf of our Price Family Preschool team, I'd like to express our deepest gratitude to all of you who make our preschool such a special place.

We are incredibly appreciative of our Temple and Preschool families for their ongoing support and partnership in creating an environment filled with love and trust. It's because of this shared commitment that we can inspire children to develop a love of learning and foster friendships that will last a lifetime.

*We wish everyone a happy and healthy Thanksgiving. Thank you!*



**SAVE THE DATE**  
**SATURDAY, DECEMBER 14**  
**4:30-7:30 PM**

*Hanukkah Happening*

Join us for games, crafts, music, SNOW, and Hanukkah Spectacular Musical Revue.  
Food and drinks available for purchase.



# Mitzvah of the Month – Items for We Care Gift Bags



Meals on Wheels volunteers deliver nutritious meals to seniors. Frequently, the volunteer is the only person the homebound person may see all day. In addition to the meals, the volunteer provides human contact and a safety net for those living alone.

Meals on Wheels volunteers also bring special gift bags for birthdays and holidays, filled with useful treats.

For this month's Mitzvah of the Month, the Social Action Committee asks you to bring suggested items such as these:

Gift bags – medium or large, with holiday or birthday themes, or colorful patterns; please – no wine bags

Hand towels, potholders, dish towels, jar openers

Socks

Crossword, sudoku books, adult coloring books with colored pencils

Playing cards

Hand knitted or crocheted items

Magnifying glasses

Night lights

Greeting -cards, stationary, envelopes, postage stamps

Brushes, combs

Small first aid kits

Calendars and day timers for 2025

Toiletries, including shampoo, lotion, deodorant, toothbrushes/toothpaste, floss, soap, small packs of tissues

Notepads, post-it notes, pens, sharpened pencils

Please note: they do not distribute any medications (including aspirin, cough drops or other over-the-counter items), razors, nail polish, cosmetics or candles.

For questions, please contact Elana Levens-Craig at [socialaction@teesd.org](mailto:socialaction@teesd.org)

Bring your donations to the white barrel in the lobby of the Temple office building, and members of the Committee will deliver them.





# Condolences



To Arlene Miller on the death of her partner,  
**John Piscatella**



To Lori Ginsberg and Alisa Adkins on the death of their father,  
**Barry Benn**

To Lori Schreiber Klase on the death of her husband, Nancy Marcus on the death of her brother-in-law and Rabbi Devorah Marcus on the death of her uncle  
**Evan Neil Klase**



## Helping to Repair the World

Your generous donations to Temple Emanu-El's Social Action Fund are used to serve the needs of the community, locally, nationally and internationally.

In October, funds were sent to the National Alliance on Mental Illness ([namisandiego.org](http://namisandiego.org)), the community's voice on mental illness in San Diego and Imperial Counties. Its mission includes supporting people with mental illnesses and their families by helping them find coping mechanisms for their daily struggle with brain disorders; educating people who have mental illness, their families, and the general public about mental illness with the goal of dispelling ignorance and stigma; and advocating for more research and an improved system of mental health services across the nation.

In November, we will allocate money to the San Diego Volunteer Lawyer Project ([sdvlp.org](http://sdvlp.org)). This is the county's oldest and most comprehensive pro bono legal services program for low-income individuals, non-profit community organizations and others. They handle civil legal cases, including legal guardianship of children, restraining orders, family law, elder law, services to those with HIV/AIDS, landlord disputes, special immigrant juvenile status, domestic violence and more. More than 75% of their clients are women.

In addition, the Social Action Committee responded to the devastation following Hurricane Milton with an emergency donation to World Central Kitchen ([wck.org](http://wck.org)), which provides fresh, nutritious meals in the wake of natural disasters. They were ready to help those affected immediately.

The Social Action Committee carefully screens all recipients to make sure money you donate to the Social Action Fund to continue the work of tikkun olam is spent wisely. We appreciate your donations, large or small, to help with this work.



## Israel Engagement

by Rhonda Amber and Jonathan Licht

While the wars are ongoing, deaths are accruing, and hostages remain in Gaza, the Jewish people show resilience by continuing our traditions, faith and moving forward as community. The anniversary of the October 7 massacres and its commemoration occurred amid the festival season. Despite relentless remembrance of the tragedy, we did our best to celebrate the holidays and be joyful. This is the way we demonstrate to ourselves, to our children and to one another that we Jews believe that better times will come.

Yisrael Klitsner returned to Temple Emanu-El on September 29 and shared many of his insights on Israel. Mr. Klitsner gave us a well-informed and heartfelt update on the evolving and possible changes regarding the Government coalition, politics, the war, hostages, Israel's internal divide, the social situation in Israel and more. The presentation was well attended, and the question-and-answer period, which followed, was open and engaging.

On Saturday, November 9, at 11 am, the School of Global Policy at UCSD will host a lecture by two internationally recognized pundits - Dr. Dahlia Scheindlin, an author and policy expert in Israel, and Dr. Khalil Shikaki, renowned for his work in Palestinian polling and policy as the Director of the Palestinian Center for Policy and Survey Research. The speakers will take an in-depth look at public opinion in Israeli and Palestinian societies and explore possibilities for a path forward. The talk will be held at Robinson Hall, and is open to the public. This is an opportunity that shouldn't be missed!

Please join Israel Engagement on Thursday, November 14, 6 pm on Zoom. We will create a comfortable space to discuss Israel. Please contact us or the Temple to register and get the Zoom link.

Please send any suggestions and questions to [rjamber2011@gmail.com](mailto:rjamber2011@gmail.com).

May this year be a better year.

## Adult Education

\*\*\*\*

### Tough Conversations with Jews

This series will tackle some of the challenging conversations that Jews have been struggling with—balancing supporting and critiquing Israel, questions of power and powerlessness and Zionism, navigating anti-Semitism, and the role of religion in society, taught by Rabbi Benj. Meet after Shabbat morning services for lunch and learning. Cost is \$5 per class. To see the full list of dates and to register go to our Temple website: [teesd.org](http://teesd.org).

### Torah for the Table—Saucy Women of the Torah

Torah for the Table is an 8-session series that combines Jewish learning and food! At each session, Rabbi Devorah will lead a discussion about a different woman, while chef Barry Lander prepares a four-course meal related to their story. What better way to celebrate a historic year for women than an examination of the Women of the Torah along with menus that are as saucy as many of our heroines' stories. Classes will be held once a month at the Temple on Wednesday evenings beginning November 13. The cost is \$36 for an individual class or \$180 for the 8-session series. To see the full list of dates and to register please go to our Temple website: [teesd.org](http://teesd.org).



## Adult Education



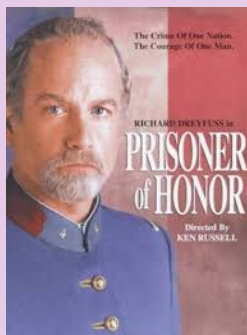
Supporting Lifelong Jewish Learning

Picturing Prejudice: The History of Antisemitism Through Film

### ***Prisoner of Honor***

Saturday, November 23, 7 pm

Temple Sanctuary



"Prisoner of Honor" documents the Dreyfus Affair in France which saw a French Captain sent to Devils' Island for espionage near the end of the nineteenth century. Richard Dreyfuss plays Colonel Picquart who is given the job of justifying Dreyfus' sentence. Instead, he discovers that Dreyfus, a Jew, was merely a convenient scapegoat of French military leaders for the actions of the true culprit, a member of the French General staff. Picquart's attempt to right the wrong results in the end of his military career, and the famous French author, Emile Zola, found guilty of libel. Historians view the Dreyfus Affair as a harbinger of modern antisemitic movements.

The movie, directed by Ken Russell, was made in the UK and the USA in 1991.

Laurie Baron will introduce the film and facilitate a discussion after it is screened.

There will be a bring your own dinner at 6pm in the courtyard or Social Hall.

\*\*\*\*

### **Torah Study**

**Saturday mornings—9:00 am In Person and on Zoom**

An in-depth study of Torah portions and commentary. Come in person or connect from home. Zoom links will be provided in the Temple's weekly emails.

\*\*\*\*

### **Coffee with the Rabbi**

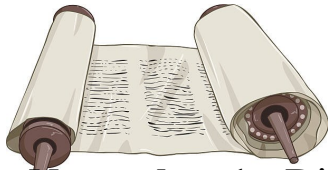
**Wednesdays, 11 am In Person and on Zoom**

Drop in when you can for an informal discussion on current events. No sign up, no charge and no preparation is needed – just an interest in Jewish learning.

\*\*\*\*

Please consider a contribution to the Adult Education Fund to help support the Committee's efforts to continue to engage speakers and provide the high quality of life-long learning experiences that have become an integral part of Temple Emanu-El. Program costs are continuing to rise, and we need your support.





## Torah School November Schedule

**November 1** - Dia de Los Muertos Family Shabbat & Dinner 6 pm (all grades)

**November 3** - Torah School 9 am to 12 pm Pizza Lunch 12 pm

**November 3—Artisans' Festival - 9 am**

**November 6** - Hebrew Classes Online 4:30 pm, In Person 5:30 pm

**November 10** - **NO** Torah School

**November 13** - Hebrew Classes Online 4:30 pm, In Person 5:30 pm

**November 17** - Torah School 9-12 pm (No Clubs) 12:15 pm Friendsgiving

**November 20** - Hebrew Classes Online 4:30 pm, In Person 5:30 pm

**November 24** - **NO** Torah School—

**November 24 -Thanksgiving Break**

**November 27** - **NO** Torah School

**November 28—Thanksgiving Day**

## *Drum Circle—Tuesday, November 5, 3 pm*



Our group of drummers welcomes you to join us and experience a drum circle on Tuesday, November 5, in the synagogue courtyard. In October, we welcomed a new member who just moved here from Los Angeles. She said that she enjoyed feeling the rhythms she produced and had no prior knowledge that she could. You might surprise yourself, too!

Ira Moskowitz, a drummer with tremendous experience, leads us each month. He prepares different rhythms for us and shares a variety of drums that he has enjoyed over the years. Ira engages us in an opening meditation to center us in the moment. At our last meeting, he encouraged us to rotate around the circle to try out different drums. We had fun with it and I think we surprised each other with what we felt.

Michelle Jirkovsky, the synagogue's Music Director, supports us, and supplies us with our drums, including a djembe, dumbec style or buffalo drum. Come and see what they are like and how you can make them sound!

We are beginning to form a core group of people who are comfortable with the spirit of the circle, and always welcome newcomers. Participation invites you to express your own personal rhythm, sensing the spirit of transformation and experiencing that drumming is very forgiving (it's not like playing a traditional musical instrument) and a willingness to have fun. Drumming is an opportunity to leave your "to do" list at home.



We meet on the first Tuesday of each month at 3 pm. No experience is needed, you do not need to be a member of the Temple, and there is no charge.

For any questions or to get on the list for reminder emails, please contact Bonnie Baron at [bonniebaron@gmail.com](mailto:bonniebaron@gmail.com).





## Help for Israeli Kids Following October 7

Late in December of last year, I received a call from Yeshara Gold, a rabbi's wife, who is originally in Florida, but now lives in Israel. Prior to moving, Yeshara had learned the Recovery International (RI) method and became an instructor. She currently runs a non-profit organization, which helps children. Fear and anger linger with the young people who were suffering from the aftermath of the October 7 atrocities. Yeshara felt that Dr. Low's method would help these kids cope.

"Power Your Mind" is a Recovery International program authored by Angela Sullivan, which is used to give young people tools to reduce their symptoms. It has been successfully used by the YMCA, the Community Research Foundation, churches and many after-school programs. Yeshara translated "Power Your Mind" from English to Hebrew, and uses it to help teenagers and young adults, ages 13 – 24.

"Fortunately, with a dynamic solution developed in the late 1930s by Dr. Abraham Low, children can, by using their own willpower, gain control over their negative behavior. Our Recovery Support Group program is based on Dr. Low's work, accredited as the first cognitive behavioral therapy. Recovery International, which continues Low's work, gave Oct7KIDS permission to translate into Hebrew its "Power Your Mind" workbook." (*Jerusalem Post*, September 20, 2024)

Recovery International is a self-help method that is used to change people's lives for the better. It offers a cognitive behavioral training program developed by the late neuropsychiatrist Dr. Abraham Low. For more than 85 years, this method has helped people learn to identify and manage negative thoughts, feelings, beliefs and behaviors that can lead to emotional distress and related physical symptoms. Millions of people all over the world have used this program to live more peaceful lives.

I have the privilege of leading a Recovery International meeting for adults in our Temple Library each Thursday at 10 am.

Newcomers are always welcome. You don't need to sign up, just show up! There is no beginning or end to our program.



## Todah Rabah

To Barbara Pollack for her work on editing the bulletin



To Windmill Farms for donating hundreds of grocery bags to be used for this year's High Holy Day Food Drive

## Mazal Tov

To Carol Davis on the birth of her great-grandson, Avi Lee, son of Taylor and Eytan Argavani, grandson of Jodi and Ilan Argavani. Avi is the nephew of Keri and Laura Davis-Duffy



To Rhonda Amber and Jonathan Licht on the birth of their granddaughter, Avis Doris, daughter of Rosalie and David DiCarlo

## Community Corner

### Living From a Place of Joy

by Gail L. Braverman, M.A., LMFT

Have you ever wondered about the difference between happiness and joy?  
Learning the difference between the two can help you live a more meaningful and purposeful life.

Joy is the selfless feeling of extreme happiness and pleasure. You may have joy when you care for others, watch a sunset, are thankful or grateful or have spiritual experiences. Joy may often require great self-sacrifice; you'll feel lasting inward contentment and peace. This feeling may not be about yourself, but you may feel this way by helping others.

Happiness is seeking pleasure and comfort. Joy is seeking meaning and purpose in life.

Happiness is an outward expression. Joy is an inner feeling.

Happiness is temporary and lasts for a short duration of time, but joy lasts for a long time even as a memory.

Every human being possesses three gifts: humanity, talent and wisdom. They are all grounded in joy.

The first type of gift is **humanity - who you are**. The way you share your true self's inner goodness. It is about who we are and how we can better treat one another and the world. Helping someone else helps us feel joy.

The second type of gift is your **talent - what you do**. What you are good at, what you do with that talent, and how you bring it into the world. Some of us are good listeners, some of us make music, and some of us are great with numbers.

The third type of gift is your **wisdom - what you know**. What you have learned from your life experience and education that can be useful to others. Most of us have gotten through hard times and we can assure others they will, too.

Here is a "toolkit" that can help you give and get joy:

#### Relationships:

Call a friend you haven't spoken with in a while.  
Send a note to someone telling them how you appreciate them.  
Write a kind note, text, or email complimenting someone's work.  
Listen to someone having a bad day.

#### Community:

Knock on a neighbor's door to check in.  
Reach out to someone you admire and let them know how they influenced you.  
Smile at a stranger.  
Speak up about something that matters to you.

Happiness may not be the best thing to aim for but joy can be highly gratifying in a way that is long lasting and has impact on making the world a better place.

**Reflection:** When was the last time you experienced joy?

**Today's Practice:** What is one thing you can do to bring joy to someone?

I welcome your comments: [gbrave3333@aol.com](mailto:gbrave3333@aol.com)



# Contributions

*Contributions received after the first of the month will be published in the next month's bulletin.*

*Commemorate a life cycle event or remember a loved one with a donation to one of the Temple's specially designated funds.*



# YAHREIT OBSERVANCE

*Zecher Tzadik Livracha* – The Memory of the Righteous is a Blessing  
The following yahrzeits will be commemorated at Shabbat services:

<b>November 1 &amp; 2</b>	<b>November 8 &amp; 9</b>	<b>November 15 &amp; 16</b>	<b>November 22 &amp; 23</b>	<b>November 29 &amp; 30</b>
Ralph Burston	Marcella Brandt	Ross Berton	Charlotte Pivo	Michael Blotner
Jeanne Londer	Stanley Justin Braun	Harry Faternick	Oscar Goldenberg	Hannah Furman
Louis Goldberg	Godel Frydman	Rudolph Hirsh	Mark Friedman	Milton Gellens
Diane Maltzman	Janet Rose Mayers	Michael Leary, Jr.	Ron Miller	Edith Haydu
Lois Flesner	Albert Renkin	Semyon Levin	Ramona Herney	Julian Morrison
Sally Gilbert	Morris Rosenthal	Sophie Weiner	Roger Sweeney	Connie Corliss
Rae Marie	Pacey Barron	Michael Lynn Mout	Marion Zeichick	Bea Epsten
Ibarra de Pasmanik	Devora Bennett	Moses Trop	Elick Zitsman	Rachel Kae
Dr. Andrew Israel	Norma Gellens	Allan Burns	Leon Feingold	Harriett Schwartz
Hanna Kofman	Albert Lederer Lev	Elias Holtzman	Sam Oolie	Martin Newmark
Wendy Morton	Yitzkhak Rabin	Richard Hertz	Edward Robbins	David A. Pimentel
Joseph Prenner	Dorothy Slucker	Burt Kapust	Bernard Seid	Julie Thompson
Sol Bloom	Moses S. Berlin	Janathin Miller	Arthur Bloom	Rifat Badi
Sylvia Goren	Stan Burney	Sylvia Mentel	Herbert Boss	Miriam Bauer
Sarah Levine	Dianne Goldberg	Louis Rosenberg	David Levine	Stuart Cohen
Charlotte Wittenberg	Nathan Yellen	Simon Kramer	Larry Evans	Alexander Degan
Pauline S. Latta	Albert Porter	Larry Weinberg	William Knoller	Rae Goldberg
Gideon Puritsky	Sara Siegel	Pearl Berman	Isadore Ontell	Rose Otis
Rose Schipper	Jose Verdugo	Howard Steinberg	Richard Sigismonti	Walter Loewenstein
Sylvia Mildred Sobo	Barbara Bloom	Lilliam Knoller	Marvin Bobrof	Samuel Mason
Sally Fagan	Ken Given	Mary Friedman	Ruth Bobrof	Fred Scheure
Freda Houston	Rachel Glovinsky	Harry Friedman	Steve Elisberg	Betty Lias
Harriet Korn	Leona Coleman	Florence Gwasdoff	Marci Fishman	Rowena Lupi
Louis Coolik	Edward Arthur Levy	Mollie Rumlper	Sarra Fuzaylov	Ernest Charles Nathan
Shirley Mann	Regina Mayer	Louis Clark Fleetwood	Maurice Mandel	Rowena Lupi
Phillip Steinberg	Ilya Reytblat	Rona Gallen	Ellan Levitsky Orkin	Eleanor Schwartz
Mary-Jon McAvoy	Zenda Arkin	Janet Wohl	Beverly Klaven	Elaine Treisman
Marty Schatz	Maurice Kort	Rebecca Sherman Cohen	Rosel Lange	Ruth Bodian
Sarah Silverman	Esther Fishman Barlas	Lenora Rubenstein	Monica Simler	Samuel Lenett
Steve Lincoln	Arnold Baron	Ruth Brav	Ike Dreizin	Joshua Morrison
Steven Todd Lincoln	Ralph Byrnes	Avery Busby	Oscar Sherr	Corrine Moss
Irwin Dickstein	Deborah Gilbert	Irving Clorfeine	Beth Schlesinger	Harvey Seiden
Morris Rubin	Mildred Polgar	Rabbi Alexander Schindler	Stuart Wolf	Frank Tishkoff
Howard Wayne	Donald Eichler	Ed Stein	Richard Seymour Berman	Irving Aist
Harvey Lenett	Maxine Chenkin Kreinberg	Louis Bazrod	Robert Hulter	Fannie Blumenfeld
Philomena Martin	Raymond Schwartz	Sylvia Paul Dyson	Seymour Levine	Sarah Hannah Goldberg
Edward Platt	Benjamin Orkin	Martin Futterman	Evelyn Solomon	Sol Goldstein
	Ida Ritter	Robert Merritt Quittner	Dorothy Stone	Joan Jacobs
	Dorothy Sherman	Victor Schulman	Ella Gross	Phyllis Bertschi
	Sanford Tex	Edwin Swann	Sally Malberg	Rose Chawkin
		Robert Zanville	Marie Yellen	Cecelia Gold
			Sol Naiman	Gary Jacobs
			Helen Schulman	Arthur Sacks
			Isidore Shapiro	Leslie Siegel
			Miriam Wotiz	



# In Our Temple Emanu-El Family

## NOVEMBER BIRTHDAYS

11/1 Sherry Resh  
Vicki Spilkin  
George Lager

11/2 Jill Linares  
Lily Sobel  
Harper Dean

11/3 Melissa Kae  
Joel Young

11/4 Julie Parker  
Avi Schmidt

11/5 Sheryl Klein

11/7 Liat Gaghagen  
Suzanne Handler  
David Kostrinsky  
Michael Rosen

11/8 Melissa Swann-Bloom  
Sheila Lipinsky  
Aneel Henry

11/9 Liam Barnik  
Laura Davis-Duffy  
Annabelle Saltman  
Ezra Saltman

11/10 Jacob Belasco  
Harvey Korfin  
Jared Luchans  
Barbara Rosenthal  
Emma Siegel  
Nathan Stevens  
Sofiya Farook

11/11 Marilyn Braun  
Jonathan Brenis  
Michelle Jirkovsky

11/12 Victoria Herman  
Charles Rogal  
Hannah Cary

11/13 Judy Faitek  
Allie Glovinsky  
Diane LeCover  
Debbie Tirouda

11/14 Charles Kossman  
Darlene Oolie

11/15 Norm Hegler  
Nathan Mayers

11/16 Mark Barahman  
Madison Bucci

11/17 Grace Levine

11/18 Jim Behrend  
I-Chun Chen  
Sonia Fleischman

Nicole Lizano  
Allison Stevens  
Doriane Zubkoff  
Josie Zubkoff  
Mikayla Berger

11/19 Myrna Cohen  
Sheldon Derezin  
Veida Chanel Arguilez

Terry Blocker  
11/20 Joshua Bloom  
Akshay Sateesh



11/20 Susan Schwarz  
11/21 Rosie Jacobson  
Michele Kipnis  
Arlene Miller  
Tamara Tseselskaya

11/22 Jason Svet  
11/23 David Manley  
11/24 Beverly Brown

Keri Copans  
11/25 Emily Bartell  
Barbara Pollack  
Liebbe Weissman-James

11/26 Robbie Bailund  
11/27 Robert Handler

11/29 Jacob Berger  
Patrice Breslow  
Deborah Doucet

11/30 Lilah Barahman  
Jocelyn Martin  
Anna Perino  
Ruben Smith





Temple members who are able to go above and beyond the standard Temple dues requirement enable us to continue our high standard of services and programs for all members, regardless of means. Please consider joining at one of the following levels:

## Chai Circle



All levels of Chai Circle and Life Membership will have their names published at High Holy Days and in HaSofer (The Scribe). For more information about our programs, please call the Temple office at (619) 286-2555.

## Life Membership

Thank you to our lifetime endowment members



## Add Your Strength to Ours!

Below is a list of contacts for committees, projects and other ways to become more involved in the life of Temple EmanuEl. Please reach out to any of these groups to learn more about their work, and how you can become involved.

- **Adult Education**      [adulthood@teesd.org](mailto:adulthood@teesd.org)  
Rabbi Benj Fried      (619) 286-2555
- **Advocacy**      [advocacy@teesd.org](mailto:advocacy@teesd.org)  
Barbara Learner  
Janice Steinberg
- **Budget and Finance**      [financecommittee@teesd.org](mailto:financecommittee@teesd.org)
- **Caring Community**      [caringcom@teesd.org](mailto:caringcom@teesd.org)
- **Endowment**      [endowment@teesd.org](mailto:endowment@teesd.org)  
Bob Rubenstein
- **Facilities**      [facilities@teesd.org](mailto:facilities@teesd.org)  
Marc Glazer
- **Library**      [office@teesd.org](mailto:office@teesd.org)
- **Membership**      [membership@teesd.org](mailto:membership@teesd.org)  
Erica Whinston
- **Mental Health**      [mentalhealthcom@teesd.org](mailto:mentalhealthcom@teesd.org)  
Marie Raftery
- **Mi Shebeirach Tapestry**      [tapestry@teesd.org](mailto:tapestry@teesd.org)  
Claire Fritz
- **Preschool**      [preschool@teesd.org](mailto:preschool@teesd.org)
- **Publicity**      [publicity@teesd.org](mailto:publicity@teesd.org)
- **Safety/Security**      [security@teesd.org](mailto:security@teesd.org)  
Greg Houska
- **Social Action**      [socialaction@teesd.org](mailto:socialaction@teesd.org)
- **Torah School**      [thscom@teesd.org](mailto:thscom@teesd.org)  
Jane Muschenetz  
Patricia Cardozo
- **Women of Reform Judaism**      [wroj@teesd.org](mailto:wroj@teesd.org)  
Nancy Marcus  
Barbara Chancy
- **Youth**      [rabbibenj@teesd.org](mailto:rabbibenj@teesd.org)  
Rabbi Benj Fried



# Women of Temple Emanu-El

by Barbara Chancy and Nancy Marcus, Co-Presidents



Don't miss the amazing Artisan Festival on Sunday, November 3, beginning at 9 am. Several new artists are exhibiting with us this year and many favorites have returned. Included in the shoppportunities is a table filled with Hanukkah decorations for your home and lots of child-friendly crafts. Daylight savings time ends Saturday night, and the clocks will be turned back one hour, so you will have an extra hour of rest before coming. We will also have our gift card sale and artisan's raffle!

Wednesday, November 20 is our fun-filled Dinner and Bunco Game Night. Remember – no skill is required to play Bunco. All you need to do is be able to roll the dice! Dinner will be at 6:30 pm followed by the games. The cost is \$18 per person. Reserve your spot by emailing us at [wrj@teesd.org](mailto:wrj@teesd.org).

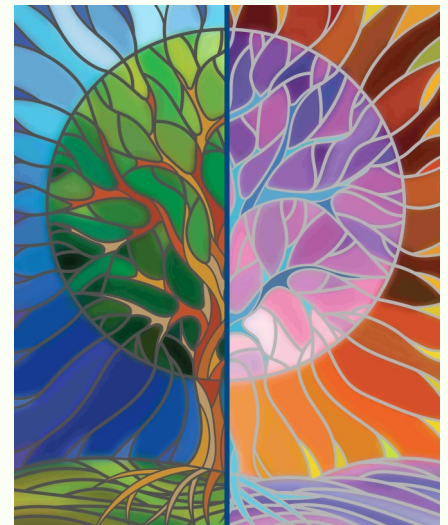
Sisterhood's annual Hanukkah Latke Party, Bingo and Gift Exchange will be held on Wednesday, December 18, 6:30 pm. This event is always well attended. Plan to join us!

If you are not a member of the Women of Temple Emanu-El, we encourage you to connect with us. We offer varied activities throughout the year, and work to support the Temple. We enjoy being a part of our Temple family. We love giving women an opportunity to develop their leadership skills. Our work through the Women of Reform Judaism advances the lives of women both here at home and around the world.

- If you believe that women should receive equal pay for equal work, so do we!
- If you believe that women have the right to make their own medical decisions, so do we!
- If you believe LGBTQ+ people should have full rights to live their lives in safety, so do we!
- If you believe all people should be treated humanely, so do we!
- If you believe no child should go to bed hungry, so do we!
- If you believe it is our task to make the world better, day by day, so do we!

Welcome to the Women of Reform Judaism. Join us and become a part of this amazing network of women that spans the globe. Membership forms are available in the Office or online. Look for the Donations list; scroll down to Women of Reform Judaism and click on WRJ Sisterhood Dues.

Without you, we are one member short!



# Safety/Security Committee

by Greg Houska, Safety/Security Committee Chair

Early in November is the perfect time to review important Thanksgiving safety tips, before you get caught up in counting how many guests you have invited and reviewing recipes to accommodate various eating preferences.

1. **Home Security:** Before leaving for any gatherings, make sure all doors and windows are locked. Consider using timers for lights to give the appearance that someone is home.
2. **Social Media Caution:** Avoid posting live updates or pictures of your Thanksgiving feast until after the event. This helps prevent potential burglars from knowing your home is empty. Plus, most people really don't care how your Jello salad turned out.
3. **Food Safety:** Keep perishable foods refrigerated until just before serving to avoid food borne illnesses. Serve food in batches to reduce the risk of bacteria
4. **Fire Safety:** Keep a close eye on what you are cooking and be careful if using candles at the table. Have a fire extinguisher handy, especially if you're deep-frying a turkey.
5. **Alcohol Awareness and Transportation Planning:** If you're serving alcohol, monitor your guests' consumption. Encourage designated drivers or offer alternatives like ride-sharing services to ensure everyone gets home safely.
6. **Emergency Contacts:** Have a list of emergency contacts ready, including local services and a plan in case some one needs assistance.
7. **Child Safety:** If children are present, ensure those hazardous items like sharp kitchen tools and breakables are out of reach and that any choking hazards are managed.
8. **Pet Precautions:** Keep pets away from the dining area to avoid food mishaps or accidents, and make sure they are secure when guests arrive.

Happy Thanksgiving everyone!





Election Day is  
November 5  
Make your voice heard!

Daylight Savings Time ends  
on November 3. Move your  
clocks back one hour before  
bed on Saturday night,  
November 2.



## NOVEMBER ANNIVERSARIES



- 11/5 Rabbi Benj Fried and David Greco
- 11/7 Jeff and Laura Karel
- 11/9 Patric Lester and Rebecca Bierman
- 11/10 Randy and Nicholas Silverstein  
Joshua Mercer and Carrie Goldsmith
- 11/11 Adam and Erica Whinston
- 11/13 Bradford Spilkin and Shulamit Nelson
- 11/16 Ron and Amara Berg
- 11/25 Howard and Barbara Kugler  
Charles and Shelley Dashevsky  
Terry and Nirit Blocker
- 11/26 Steve and Susan Davis
- 11/27 Rick and Cathy Goldberg
- 11/29 Joshua Clavell and Meredith Saylor





**We'd love to share your simcha!**

Do you have an engagement, a wedding or a new baby in your family? Share your happiness with the congregation! Please email the information to [publicity@teesd.org](mailto:publicity@teesd.org) to be included in an upcoming bulletin.

In our Sanctuary there are two special and always visible means of acknowledging those we wish to honor and those we wish to remember: Leaves on the Tree of Life and Plaques on the Memorial Board. In addition, the Temple has cemetery plots for sale in the Mt. Sinai II lawn at El Camino Memorial Park. For more information please call the office at 619-286-2555.



**988  
SUICIDE PREVENTION  
HOTLINE**

988 is the new three digit code to route callers to the National Suicide Prevention Lifeline for support 24 hours a day, 7 days a week. Please remember this number if you or someone you know is in crisis. There is no charge. Call or text 988, or chat at [988lifeline.org](http://988lifeline.org) from anywhere in

# CARS

Temple Emanu-El has signed on as a partner of CARS, a nonprofit organization that takes donated vehicles and returns 80% of the proceeds to the organization of the donor's choice. CARS was founded in 2003 and has donated millions of dollars to nonprofits across the country.

The process is simple: log on to [careasy.com](http://careasy.com) and follow the three easy steps. You can select Temple Emanu-El as your nonprofit of choice, provide the information about your vehicle and arrange for CARS to pick up at your office or home. They will work around your schedule and take care of all the paperwork. There is no cost to the donor and donations are tax deductible.

If you or someone you know has a vehicle they would like to donate, visit [careasy.org](http://careasy.org) to learn more about the process or contact anyone at the Temple office for assistance.

Thanks for your support.



## Morgan Stanley



**Phil Bresnick**

Portfolio Manager  
Senior Vice President | Financial Advisor  
101 West Broadway, Suite 1800  
San Diego, CA 92101  
[619-668-4334](tel:619-668-4334)  
[philip.bresnick@morganstanley.com](mailto:philip.bresnick@morganstanley.com)  
[advisor.morganstanley.com/the-bresnick-group](http://advisor.morganstanley.com/the-bresnick-group)  
CA Insurance Lic. #0A05261 / NMLS #1401662

© 2024 Morgan Stanley Smith Barney LLC. Member SIPC.  
BC007 CRC 5709123 06/23





DIAMONDS ♦ GEMS ♦ FINE JEWELRY ♦ CUSTOM DESIGN



**MATT MEIS**  
FINE CUSTOM JEWELRY

SPECIALIZING IN CUSTOM DESIGN  
WEDDING, ANNIVERSARY AND  
SPECIAL OCCASION FINE JEWELRY  
AND JEWELRY REPAIR



BY APPOINTMENT  
IN THE CONVENIENCE  
OF YOUR HOME OR OFFICE

(619) 218-1319 ♦ mattmeis.com ♦ matt@mattmeis.com



Proudly Serving Jewish Families For  
Over 46 Years

**Am Israel Mortuary**  
San Diego's "Only" Jewish Mortuary  
Family Owned and Operated  
For Three Generations

619-583-8850

[www.AmIsraelMortuary.com](http://www.AmIsraelMortuary.com)

**LGC**

**LINCOLN  
GUSTAFSON  
& CERCOS, LLP**

**Thomas J. Lincoln**  
Attorney at Law  
[tlincoln@lgclawoffice.com](mailto:tlincoln@lgclawoffice.com)

**California**  
(619) 233-1150  
550 West C Street  
Ste # 1400  
San Diego, CA 92101

**Nevada**  
(702) 257-1997  
3960 Howard Hughes Parkway  
Ste # 200  
Las Vegas, NV 89169

**Arizona**  
(602) 606-5735  
2415 E. Camelback Rd.  
Ste # 700  
Phoenix, AZ 85016

## HA-SOFER • THE SCRIBE

is published monthly by Temple Emanu-El  
6299 Capri Drive • San Diego, CA 92120

## BULLETIN DEADLINES

November 5 for the December issue  
December 5 for the January issue



**ESSENTIAL  
PROPERTY  
MANAGEMENT**  
Platinum Service

**JUDE FOX**  
PROPERTY MANAGER

619.861.8852  
8504 La Mesa Blvd. La Mesa, CA 91942  
[judefoxrealtor@gmail.com](mailto:judefoxrealtor@gmail.com)  
[www.sdlivingrealestate.com/about/jude-fox/](http://www.sdlivingrealestate.com/about/jude-fox/)  
DRE# 01970577




**Gail L. Braverman, MA, MFT**  
*Individual, Couples and Family Counseling*

License #35281

(619) 282-4730



# November 2024 Tishrei—Cheshvan 5785

SUNDAY	MONDAY	TUESDAY	WEDNESDAY	THURSDAY	FRIDAY	SATURDAY
					Nov. 1 • 30 Tishrei	Nov. 2 • 1 Cheshvan
					Dia De Los Muertos Family Shabbat Service 6 pm	Torah Study 9 am Shabbat Morning Service 10:30 am Set-Up for Artisan Festival
Nov. 3 • 2 Cheshvan	Nov. 4 • 3 Cheshvan	Nov. 5 • 4 Cheshvan	Nov. 6 • 5 Cheshvan	Nov. 7 • 6 Cheshvan	Nov. 8 • 7 Cheshvan	Nov. 9 • 8 Cheshvan
Artisan Festival 9 am—3 pm Torah School 9 am Introduction to Judaism 1 pm	Mah Jongg 1:30 pm	<b>Election Day</b> Drum Circle 3 pm Adult Hebrew Classes 5 pm Community Jewish High 6 pm	Coffee with the Rabbi 11 am Hebrew School Torah Class 4:30, 5:30 pm Torah School Teacher Meeting 6:30 pm	Bridge with Benj 12:30 pm	Shabbat Service 6 pm	Torah Study 9 am Shabbat Morning Service Bar Mitzvah 10:30 am
Nov. 10 • 9 Cheshvan	Nov. 11 • 10 Cheshvan	Nov. 12 • 11 Cheshvan	Nov. 13 • 12 Cheshvan	Nov. 14 • 13 Cheshvan	Nov. 15 • 14 Cheshvan	Nov. 16 • 15 Cheshvan
No Torah School Introduction to Judaism 1 pm Adult B'Nai Mitzvah 2:30 pm	<b>Veterans Day</b> Preschool & Office Closed	Adult Hebrew Classes 5 pm Community Jewish High 6 pm	Coffee with the Rabbi 11 am Hebrew School Torah Class 4:30, 5:30 pm Torah for the Table 6 pm	Bridge with Benj 12:30 pm Band Rehearsal 6 pm Israel Engagement 6 pm	SanETY Shabbat Service 6 pm	Torah Study 9 am Shabbat Morning Service Bar Mitzvah 10:30 am
Nov. 17 • 16 Cheshvan	Nov. 18 • 17 Cheshvan	Nov. 19 • 18 Cheshvan	Nov. 20 • 19 Cheshvan	Nov. 21 • 20 Cheshvan	Nov. 22 • 21 Cheshvan	Nov. 23 • 22 Cheshvan
Torah School 9 am Introduction to Judaism 1 pm Adult B'Nai Mitzvah 2:30 pm	 Mah Jongg 1:30 pm	Adult Hebrew Classes 5 pm Community Jewish High 6 pm	Coffee with the Rabbi 11 am Hebrew School Torah Class 4:30, 5:30 pm WTEESD Bunco 6:30 pm	Bridge with Benj 12:30 pm	Band Shabbat Service 6 pm	Torah Study 9 am Shabbat Morning Service 10:30 am Adult Ed Movie 7 pm
Nov. 24 • 23 Cheshvan	Nov. 25 • 24 Cheshvan	Nov. 26 • 25 Cheshvan	Nov. 27 • 26 Cheshvan	Nov. 28 • 27 Cheshvan	Nov. 29 • 28 Cheshvan	Nov. 30 • 29 Cheshvan
NO Torah School NO Introduction to Judaism NO Adult B'Nai Mitzvah	 Mah Jongg 1:30 pm	NO Adult Hebrew Classes NO Community Jewish High	<b>Preschool and Office Closed for Thanksgiving</b> NO Coffee with the Rabbi NO Torah School Hebrew Classes	<b>Thanksgiving Office and Preschool Closed</b> NO Bridge with Benj 	<b>Office and Preschool Closed</b> Shabbat Service 6 pm	Torah Study 9 am Shabbat Morning Service 10:30 am



President  
1st Vice Pres  
Treasurer  
Financial Sec/2nd VP  
Recording Secretary  
Immed. Past Pres  
Immed. Past Pres  
Executive Past Pres

Matt Meis  
Stefani Lenett  
Jeff Schindler  
Barbara Braasch  
Alec Irwin  
Marc Glazer  
Cathi Marx  
Eric Rosenzweig

Senior Rabbi  
Associate Rabbi  
Executive Director  
Rabbi Emeritus  
Founding Rabbi  
Preschool Director  
Bulletin Contact

Devorah Marcus  
Benj Fried  
Shaun Copans  
Martin S. Lawson  
Morton J. Cohn z"l  
Janet Arkin  
Publicity Committee

rabbi@teesd.org  
rabbibenj@teesd.org  
scopans@teesd.org  
  
jarkin@teesd.org  
publicity@teesd.org

