



# HA-SOFER THE SCRIBE

Nissan—Iyar 5783

אדר ב - ניסן

April 2023

TEMPLE EMANU-EL • 6299 CAPRI DRIVE, SAN DIEGO, CA 92120-4632 • (619) 286-2555 •

## Pesach 2023

Join us for a Seder in person

**Congregational Seder**

**April 6 at 6 pm**

**Adults \$54—Children (4-12) \$18—Children (3 and under) Free**

**Please sign up at our Temple Website [www.teesd.org](http://www.teesd.org).**

### Congregational Seder Menu

#### Starters

Matzah

Haroset

Eggs

Parsley

Horseradish

Chopped Liver

Baba Ghanoush

Olives, Pickles & Fresh Vegetables

#### Soup

Matzah Ball Soup

#### Dinner Buffet

Bubbie's Brisket

Apricot Chicken

Sephardic Spinach Matzah Pie

Mashed Potatoes

Vegetarian Tzimmes

Steamed Green Vegetables

Gefilte Fish

Green Salad, Beet Salad, Israeli Salad

#### Dessert

Flourless Chocolate Cake

Macaroons

Chocolate Toffee Matzah

Fresh Fruit

### Service Schedule

#### **Saturday, April 1**

Shabbat Service

10:30 am

#### **Bat Mitzvah**

Tzav, Leviticus 6:1-8:36

Malachi 3:4-24

#### **Thursday, April 6**

Passover Festival Service

10 am

Congregational Seder

6 pm

#### **Friday, April 7**

Shabbat Service

6 pm

#### **Saturday, April 8**

Shabbat Service

10:30 am

Chol HaMo-eid Pesach,

Exodus 33:12-24:26

Ezekiel 37:1-14

#### **Wednesday, April 12**

Pesach Festival Yizkor Service

10 am

#### **Friday, April 14**

Shabbat Service

6 pm

#### **Saturday, April 15**

Shabbat Service

10:30 am

Sh'mini, Leviticus 9:1-11:47

II Samuel 6:1-7:17

#### **Friday, April 21**

Family Shabbat Service

6 pm

#### **Saturday, April 22**

Shabbat Service

10:30 am

Tazria—M'tzora, Leviticus 12:1-15:33

II Kings 7:3-20

#### **Friday, April 28**

Shabbat Service

6 pm

#### **Saturday, April 29**

Shabbat Service

10:30 am

#### **Bar Mitzvah**

Acharei Mot—K'doshim,

Leviticus 16:1-20:27

Amos 9:7-15



## From Our Temple Co-Presidents

by Marc Glazer & Cathi Marx



April showers bring May flowers! They also bring matzah and charoset and the welcoming of Elijah! As we prepare to drink the four glasses of wine, dipping in our little finger to acknowledge the plagues, we use this time to remember escaping slavery. We complete our generational obligation by retelling the story this and every year so that we never take a single day of our lives or our freedoms for granted.

Later in the month we will also observe Yom HaShoah Ve-Hagevurah, The Day of Remembrance for the Holocaust and the Resistance. We also commemorate Yom HaZikaron, Israeli Memorial Day, and celebrate Yom Ha'Atzma'ut, Israel's Independence Day.

All of these holidays in rapid succession remind us that our lives are in a constant state of flux between periods of safety and periods of turmoil. During the difficult times, our job is to support and strengthen ourselves and each other. This is one of the many reasons why being a member of a synagogue is so important. Communities don't just happen overnight. They take time, effort, and energy to build. Each and every one of you, through your membership and your commitment, has helped ensure that when we face our worst and most difficult moments, there are people who will be there for us and each other.

This sense of community is the best gift that we can give to ourselves and our families. We know from experience that the more often we participate and connect with our Temple community, the stronger that bond becomes. It's also true that when there are calm and easy times, it's important to remember that strength and never take it for granted. We can say "I don't know if I need the synagogue that much right now, everything is so good." But we know from our personal and community history that when we least expect it, we may need to lean on each other for that beautiful community love and strength and hope.

Many congregants have found that helping to support, to volunteer, to serve, is a grand privilege and honor to ensure that our synagogue community is always here when needed.

Thank G-d the generations who came before us understood this message so that whether the years were good or difficult, we knew that every year regardless of what was happening, we would be gathered at our tables, making the memories that sustain us. "Seder" means "order." Jews all over the world are recounting the exodus from Egypt in the same order, teaching all generations the timeless truth of the unending cycle of the years of suffering and the years of deliverance.

May this year be a year of amazing matzah ball soup, tables filled with too many guests, tablecloths stained by red wine, laughter, joyous song, good health, and memories to last a lifetime. If you are interested in attending the second night seder with your Temple family, please visit the Temple website at [teesd.org](http://teesd.org) to sign up. We would love to see you!

## Shaun Speaks...



Shaun Copans,  
Executive Director

As you are aware, earlier this month, Silicon Valley Bank was closed by regulators, marking the largest US bank failure in more than a decade. Soon after, Signature Bank was also shut down and the Swiss National Bank helped facilitate the sale of Credit Suisse, who had been showing signs of trouble for some time.

Immediately after the news came out, representatives of the Temple's Executive and Finance Committee reached out to our contact at the institution where we conduct most of our transactional business, Torrey Pines Bank. We were assured that all our money was safe and secure, but we are currently in discussions with them about various products to make sure we are in the best position possible should there be another similar turn of events. Additionally, we spoke to the Jewish Community Foundation regarding the Temple's investment funds and endowment accounts to make sure they are protected.

Please join me in thanking the members of the Executive and Finance Committee whose work behind the scenes helps ensure that our Temple's finances are healthy, safe and secure.



Temple members who are able to go above and beyond the standard Temple dues requirement enable us to continue our high standard of services and programs for all members, regardless of means. Please consider joining at one of the following levels:

## Chai Circle

*\*Denotes five years of participation in the Chai Circle program.*



All levels of Chai Circle and Life Membership will have their names published at High Holy Days and in HaSofer (The Scribe). For more information about our programs, please call the Temple office at (619) 286-2555.

## Life Membership

Thank you to our lifetime endowment members



## Add Your Strength to Ours!

Below is a list of contacts for committees, projects and other ways to become more involved in the life of Temple EmanuEl. Please reach out to any of these groups to learn more about their work, and how you can become involved.

- **Adult Education**      [adulthood@teesd.org](mailto:adulthood@teesd.org)  
Madelynn Micon      (619) 200-3237  
Laurie Baron
- **Advocacy**      [advocacy@teesd.org](mailto:advocacy@teesd.org)  
Barbara Learner  
Janice Steinberg
- **Budget and Finance**      [financecommittee@teesd.org](mailto:financecommittee@teesd.org)
- **Caring Community**      [caringcom@teesd.org](mailto:caringcom@teesd.org)  
Ira Moskowitz      (619) 449-2762
- **Endowment**      [endowment@teesd.org](mailto:endowment@teesd.org)  
Bob Rubenstein
- **House & Grounds**      [housegrounds@teesd.org](mailto:housegrounds@teesd.org)  
Steve Naiman      (619) 449-2349
- **Library**      [office@teesd.org](mailto:office@teesd.org)
- **Membership**      [membership@teesd.org](mailto:membership@teesd.org)  
Amy Blum
- **Mental Health**      [mentalhealthcom@teesd.org](mailto:mentalhealthcom@teesd.org)  
Marie Raftery
- **Mi Shebeirach Tapestry**      [tapestry@teesd.org](mailto:tapestry@teesd.org)  
Claire Fritz
- **Personnel**      [personnelcom@teesd.org](mailto:personnelcom@teesd.org)  
Debbie Macdonald      (858) 731-1354
- **Preschool**      [preschool\\_com@teesd.org](mailto:preschool_com@teesd.org)
- **Publicity**      [publicity@teesd.org](mailto:publicity@teesd.org)
- **Safety/Security**      [security@teesd.org](mailto:security@teesd.org)  
Greg Houska
- **Social Action**      [socialaction@teesd.org](mailto:socialaction@teesd.org)
- **Torah School**      [thscom@teesd.org](mailto:thscom@teesd.org)  
Jane Muschenetz  
Patricia Cardozo
- **Women of Reform Judaism**      [wrj@teesd.org](mailto:wrj@teesd.org)  
Nancy Marcus  
Barbara Chancy
- **Worship**      [teesdworship@gmail.com](mailto:teesdworship@gmail.com)  
Shelli Stein
- **Youth**      [rabbibenj@teesd.org](mailto:rabbibenj@teesd.org)  
Rabbi Benj Fried



## Mitzvah of the Month – NEW Books for Light One Little Candle

In April, we are collecting new children's books for Light One Little Candle (LOLC). LOLC was developed to gift new books to cancer patients so they could strengthen their bond with their children or grandchildren through reading. At Moores Cancer Center at UCSD Medical Center, volunteers offer books that are appropriate for infants through age 15, in English or Spanish or both. There is no charge to the patients for these books.

This project can only accept donations of brand-new books.

Bring your donations to the white Social Action barrel in the lobby of the Temple office building. For questions or more information, please contact Helen Elias at: [helenelias1@gmail.com](mailto:helenelias1@gmail.com) or (858) 270-7264.



## Hunger Project at St. Vincent de Paul *Begins 37th Year*

The Hunger Project started its 37<sup>th</sup> year on March 12, 2023. It is amazing that the project Joan Kutner began in 1986 is still operating today, inspiring guests and volunteers alike. Temple Emanu-El has partnered with Congregation Beth Israel since the very beginning of this project. Temple Emanu-El supplies most of the volunteers for the first Sunday of each month.

The dining room at the Paul Mirabile Center (PMC) at St. Vincent was closed to the public on March 11, 2020 when the World Health Organization declared the COVID-19 outbreak a global pandemic. We are proud of the fact that the project did not miss a single Sunday during the pandemic as we transitioned to serving meals on paper plates to those who waited outside.

The PMC dining room is now open to the public and volunteers are needed back as we are serving meals on trays indoors to guests sitting at tables in the remodeled room.

One big change is that all volunteers, whether from Emanu-El or not, need to create an account at Father Joe's website, and sign up for the date you would like to attend at:

<http://congregationbeth.neighbor.volunteerhub.com/>

All parking is now underground, as our old parking lot was demolished. Please sign up and join us on a Sunday to make a difference in our community. Contributions to the Social Action Hunger Project Fund go specifically to support our work on Sundays.

For any questions, please contact Jennifer Nemeth at [lftyjen@cox.net](mailto:lftyjen@cox.net).





## Community Corner

### This Too Shall Pass

by Gail Braverman, M.A., LMFT, and Temple Board Member

I would imagine most of us have heard the adage, “This too shall pass.” Because the phrase is so familiar, so mundane and ordinary, we tend to overlook the power of its eternal truth. The phrase reminds us of the impermanence of all things and the idea that nothing lasts forever, neither the good nor the bad things.

We know intellectually that things pass, and that change is an ongoing process. When life sucks, we say, “This too shall pass” and hopefully it does - but here’s the hitch: when life is good, it, too, inevitably will pass.

No problem lasts forever. Difficult situations often bring out qualities that otherwise might not have risen to the surface, such as courage, faith, and our need for one another. All of our experiences can help us grow.

Before things do pass, however, here are some ways of managing those inevitable and difficult times:

1. **Relationship with Oneself** - This is the pillar that influences every other relationship in our life and is central to our wellbeing. A good guide is to be as kind and respectful to ourselves as we would be to a good friend.
2. **Relationship with Others** - Having strong relationships with others is the central tenet to a good and happy life. Make sure we give and receive the love, help and support that makes life worth living.
3. **Manage Emotions** - We cannot control what we feel, but we can keep ourselves from letting those feelings take control of our lives. Be aware that when you are in HALT: hungry angry, lonely and tired, you are vulnerable.
4. **Time** - Be mindful of focusing your attention on the present moment rather than turning toward the past with regrets and “coulda, shoulda, woulda’s” and projecting into the future with the “what ifs.”
5. **Limits** - know your limits and learn to say “NO” where necessary with conviction.
6. **Structure** - Keep structure in your life. Participate in things that have sustained you in the past and new things that will sustain you in the present.

“This too shall pass” is a simple and powerful phrase that gives us hope and can soothe us when we are in the middle of a painful situation by remembering that we have survived difficult situations before, and we will adapt and survive now. Cherish the good times. Replay those joyful moments in your mind and enjoy them.

**Reflection:** I may not be able to control life circumstances, but I can learn to manage myself during these times.

**Today’s Practice:** What in my life passed that I never believed would?

Comments are welcomed: [gbrave3333@aol.com](mailto:gbrave3333@aol.com)



Join us for Temple Emanu-El's  
Annual Fundraiser

06.03.23  
Save the Date

A Night at the Monte Carlo

A fundraiser to benefit Temple Emanu-El and Price Family Preschool

June 3rd, 2023

Temple Emanu-El

## From the Mailbox

With your donation to the Food Bank, you are helping to fill the pantries of San Diegans struggling to put food on the table. This means our neighbors in need, whether kids, seniors on a fixed income, or the working poor, will not have to skip or skimp on meals. Your support provides access to nutritious food and fresh produce and gives people the determination to keep moving forward. Thank you for supporting the Food Bank's mission with the contribution you made in February, and for making a difference in the lives of our neighbors.

Casey Castillo, Chief Executive Officer  
Jacobs and Cushman San Diego Food Bank

Thank you so very much for your generous donations of bagels and clothing over the many years! Our women and our staff greatly appreciate you.

Georgia, Susan Kelley, Annabell; Staff  
Rachels Women's Center

Thank you so much for the blankets, scarves, clothing and so much more. The families were so happy to get warm and comfy things to get them through our cold nights.

Our combined efforts, your generosity and love of the refugees running for their lives, and our ability to locate and deliver, makes many families able to build new lives.

Cheri Robertson  
Helping Empower Community Refugees

Please accept our sincere appreciation of your generous gift of professional clothing to go toward our students' success in the workforce.

We would not be able to support our students nearly so well without donors such as you. Your gift makes it possible for us to create a rich experience and lasting memories for our students, and encourages them to make the most of their education.

The Stand: Basic Needs Resource Center  
San Diego Mesa College

*Your generous contributions to the Social Action Fund, your help with the weekly Bagel Brigade, and your donations to our Mitzvah of the Month collections make it possible to respond to needs in our community and around the world.*

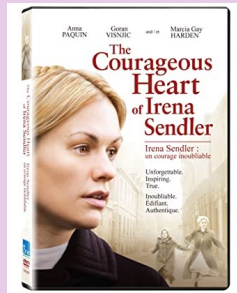


**Adult Education**  
Supporting Lifelong Jewish Learning  
by Madelynn Micon *Committee Chair*

**Cinematic Jewish Calendar Movie Series  
A Film to Commemorate the Holocaust**

***The Courageous Heart of Irena Sendler***

**Saturday, April 22, 7 pm  
Temple Sanctuary, In Person**



*The Courageous Heart of Irena Sendler* is based on a true story. Irena Sendler led a group of Polish men and women in secretly smuggling young Jewish children out of the Warsaw Ghetto in the hope that they could start a new life away from the trouble. Not only did this put her under threat from the Nazis who eventually discovered what she was doing and tortured her, but also forced her to battle with some Jewish families who feared that letting their children leave to live with non-Jews would rob them of their faith.

The movie, which has a PG rating, was directed by John Kent Harrison, and made in the U.S. in 2009.

Laurie Baron will introduce the film and facilitate a discussion after the screening.

Join us before the movie for a bring-your-own dinner in the Social Hall or courtyard beginning at 6 pm.

\*\*\*\*\*

**Torah Study**

**Saturday mornings—9:00 am In Person and on Zoom**

An in-depth study of Torah portions and commentary. Come in person or connect from home.

Zoom links will be provided in the Temple's weekly emails.

\*\*\*\*\*

**Coffee with the Rabbi**

**Wednesday mornings, 11 am on Zoom (beginning on April 19)**

Drop in when you can for a lively discussion on current events. No registration is needed— just an interest in Jewish learning.

\*\*\*\*\*

Please consider a contribution to the Adult Education Fund to help support the Committee's efforts to continue to engage speakers and provide the high quality of life-long learning experiences that have become an integral part of Temple Emanu-El.

Program costs are continuing to rise, and we need your support.

Please check your email messages for additional information and other upcoming Adult Ed programs. For questions, contact Madelynn at [adulted@teesd.org](mailto:adulted@teesd.org), or call her at (619)200-3237.



## Israel Engagement

### Government Advances Legislation and Public Protests

*by Rhonda Amber and Jonathan Licht*

Last month we had a brief update on the ongoing protests to proposed legislation of the new Knesset. It is now just a few weeks before Israel celebrates the 75<sup>th</sup> anniversary of becoming a homeland to the Jewish people and a democratic nation. Unfortunately, we cannot distract ourselves at this crucial time in Israel's history. As Josh Weinberg, Vice President of the URJ for Israel and Reform Zionism, and Executive Director of ARZA, wrote recently, "words of rebuke against the Israeli government are the last things I want to be writing. I would much rather write about the miracle that is the modern State of Israel, to sing its praises and bask in its numerous achievements."

The protests on the streets of Israel on Saturday nights are now reaching two hundred thousand people, which would be the equivalent of approximately six and half million Americans. Members of the IDF Reserves, including decorated Air Force units, have stated that they will not serve if the country becomes undemocratic. President Herzog is convening meetings to arrange compromise bills. In short, members of civil society and the military are concerned that their country, for which they sacrificed so much, will not fulfill its mission as stated in its Declaration of Independence.

Here is an excerpt from Israel's Declaration of Independence:

"The State of Israel will be open for Jewish immigration and for the Ingathering of the Exiles; it will foster the development of the country for the benefit of all its inhabitants; it will be based on freedom, justice and peace as envisaged by the prophets of Israel; it will ensure complete equality of social and political rights to all its inhabitants irrespective of religion, race or sex; it will guarantee freedom of religion, conscience, language, education and culture; it will safeguard the Holy Places of all religions; and it will be faithful to the principles of the Charter of the United Nations."

Many of the institutions and individuals of diaspora Jewry, which also contributed greatly to the establishment of Israel, are using their voices at this moment to protect and support the democratic institutions and citizens of Israel. Pesach is our next holiday and the message of our festival devoted to freedom for ourselves and others has never been more important.

Let's learn, engage and discuss Israel. Please contact us at [rjamber2011@gmail.com](mailto:rjamber2011@gmail.com) for more information.

## Drum Circle

### April 25, 3 pm

Hello, new and regular drummers.

Come join us for the monthly Drum Circle which will be held on Tuesday, April 25, from 3 – 4 pm in the synagogue courtyard.

Leanne Pearl, our Drum Leader Extraordinaire, will help us warm up and teach us new rhythms. There is ample time to explore our own rhythms. Come and see what "Call and Response" is.

This is an hour to leave your "to do" list at home. Drumming has a meditative effect on your soul.

Drumming is very forgiving. You don't need to read music; you just need a willingness to explore different rhythms and to have fun.

We "rumble," schmooze, laugh and sense a feeling of community. We have our regulars but always welcome newcomers. We genuinely like to enlarge our Drum Circle.



We have different drums available to share and try out. There is a gratuity of \$10 per person for Leanne. We have been meeting for over three years and have a strong commitment to each other.

Any questions? please contact Bonnie Baron at [bonnieebaron@gmail.com](mailto:bonnieebaron@gmail.com)





## Happy and Healthy Passover

When I write an article each month for this bulletin, I like to share how Recovery International (RI) might be relevant to that month's holiday.

In April, we celebrate Passover and think about the Jews wandering in the desert for forty years looking for the Promised Land. RI is the Promised Land for me and many thousands of other people. For many years, I had symptoms that wandered in and out of my body. There were physical symptoms as well as emotional symptoms. As I wandered, I could not find something that really gave me relief for any of the symptoms until I found RI. Recovery International has given me the tools to react in a calm and cultured way. I don't have to wander anymore.

All the tools in Recovery come from the writings and lectures of our founder, Dr. Abraham Low. "Spotting" is used in Recovery International to mean identifying disturbing feelings, sensations, thoughts or impulses.

Some of tools/spots that I use are:

- *Every act of self-control brings a measure of self-respect.*
- *When we feel our worst and try our hardest, we make our greatest gains.*
- *It takes two people to fight and one person to lay down their arms.*
- *Temper is exciting but detrimental to our mental health.*

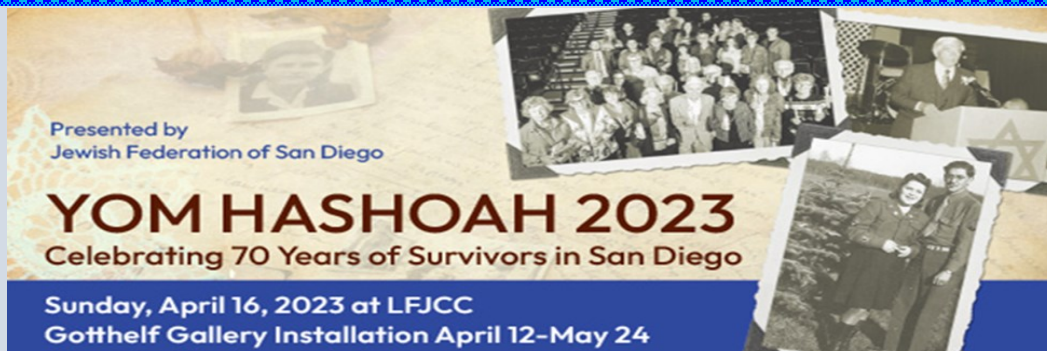
**One of my favorites is:**

- *I can choose peace over power.*

Please join us on Thursdays at 10 am in the Temple Library for a meeting. For questions, please contact Nick Silverstein, our meeting leader, at laeraceon@gmail.com, or (858)361-3110.

For more information, please go to the Recovery International website:

www.recoveryinternational.org or contact me at Lisa@recoveryinternational.org, or call the San Diego office, (619) 383-2084. **Meetings will not be held on April 6 and April 13 (office will be closed for Passover.)**



Our program will feature a video honoring and celebrating 70 years of survivors in San Diego. We will hear stories of Survivors thriving and creating new lives in our community from a panel of a survivor and second-generation family members.

**REMEMBER** - Memorial Service

**HONOR** - Candle Lighting

**TEACH** - Panel of survivor and second-generation family members remembering 70 years of new life in San Diego County. Panelists include: Joe Fox, Ben Midler, Jack Morgenstern, Barbara Ostroff, Sandra Scheller, and Diane Strum.

# Advocacy Committee 2023 Priorities

By Barbara Learner and Janice Steinberg, Advocacy Committee Co-Chairs

The Advocacy Committee's initial meetings of 2023 focused on setting priorities for the year, guided by several considerations:

- We like to stay local (San Diego and California).
- We look for issues where we can partner with other organizations.
- We want to make a manageable selection where we can have impact.

We're carrying over several issues where we've felt we made a difference in the past:

- Voter engagement. We've had great participation from the Temple community in our postcard-writing campaigns, done in partnership with the Religious Action Center of Reform Judaism (RAC). We also want to work with our SanETY youth group to encourage teens to pre-register.
- Gun violence prevention, in partnership with San Diegans for Gun Violence Prevention.
- Anti-Semitism: We've been working with Rabbi Devorah, the Board of Supervisors, and leading Jewish organizations on a County anti-Semitism resolution.

There are also some exciting new items on our plate:

- Connecting to SanETY. We've talked with SanETY members about voter pre-registration and also helping them learn to be effective advocates.
- Environmental Justice. This has been at the top of our list from the beginning. The challenge has been finding a manageable local issue. We are looking forward to partnering with synagogues throughout the state in RAC-California's new Climate Tzedek initiative.

*Please contact us at [advocacy@teesd.org](mailto:advocacy@teesd.org) if you have any questions, or would like more information on our committee.*

## Condolences

To Eric Poliak and Peggy Han on the death of Eric's mother, and to Jason Poliak on the death of his grandmother  
**Olga Poliak**

To Eric Hosenpud, Jeffrey Hosenpud, and David Hosenpud of the death of their mother  
**Edythe Weinberg**

To Marlene Korey on the death of her son  
**Benjamin Parker**

To Tammy and Richard Lampke on the death of Tammy's brother  
**Thomas Musbach**



988 is the new three digit code to route callers to the National Suicide Prevention Lifeline for support 24 hours a day, 7 days a week. Please remember this number if you or someone you know is in crisis. There is no charge. Call or text 988, or chat at [988lifeline.org](https://988lifeline.org) from anywhere in the country.

**988**  
**SUICIDE PREVENTION**  
**HOTLINE**



# Contributions

*Contributions received after the first of the month will be published in the next month's bulletin.*

*Commemorate a life cycle event or remember a loved one with a donation to one of the Temple's specially designated funds.*

*This month, we gratefully acknowledge the receipt of the following contributions:*



# YAHREZEIT OBSERVANCE

*Zecher Tzadik Livrachá – The Memory of the Righteous is a Blessing*  
The following yahrzeits will be commemorated at Shabbat services:

## March 31 & April 1

Yehuda Ben-Yehuda  
Faye Penn  
Joseph Silverman  
Hella Steinberg  
\*Sidney Smith  
John Work  
Grace Pollak  
Harriet Steinberg  
\*Connie Adelman  
Ron Berman  
\*Philip Fischer  
Seymour Reichbart  
Harold Copans  
Phyllis Spiegler  
Jane Stein  
\*Lottie Birnbaum  
Gerald Licht  
Egal Baskind  
Ilse Grunewald  
Helen Rosner  
Frederick W. Stratton  
\*Irving Blitz  
\*Julius Cohen  
Milton Inbody  
Isaac Mayer Wise  
Gerald Hoffman  
Louis Shapiro  
Cyril Saul Tukeman  
Stanley Willner  
Gerald Agranove  
Samuel Schwartz  
\*Gussie Singer  
\*Jacob Weiss  
Louis Barron  
Robert Fitzgerald  
Aaron Sam Lipshitz  
Allan Schreiber  
Ida Zitsman  
Ann Cohen  
\*Burton Goldberg

## April 7 & 8

Rachell Clavell  
Gus Eben  
Syd Glassberg  
Harry Kantor  
Francine Schuster  
Rikki Rosalind Friedman  
\*Anne Silverstein  
Natalie Calechman  
Howard Cohen  
\*Jacob Seltzer  
George Sinner  
Claudia Williams  
Jean Coolik  
\*Bobbie Goldberg  
Virginia Lee Hicks  
Charlotte May  
Hans Low  
\*Sarah Katz  
Lucille Rudof  
Paul Spadin  
Hilda Benn  
Philip Bergman  
David Gould  
Sylvia Hartnick  
Renee Braasch  
\*Hymie Lubey  
Lewis Anfanger  
Ruth Bobrow  
Ruth Bobrow Glater  
Clarence Plank  
\*Joseph E. Sousa  
George Barbarosh  
Alice Oberndorfer  
Sol Wortman  
Tillie Cooper  
David Lander  
Hymie Oken

## April 14 & 15

\*Sam Braverman  
Lillie Lipsman  
Ben Bratman  
Bill Hamovitch  
Judy Katz  
\*Philip Learner  
Caroline Lore Bruch  
Frieda Kramer Feldman  
Melvin Michel  
\*Jenny Spielman  
Steven A. Fisdell  
Leo Goldberg  
Nechama Immergut  
Hannah Sterne  
\*Joel Kaplan  
Morris Schwartz  
\*Pearl Wolkoff  
Robert Passov  
James Martin Welch  
Abraham Goldman  
\*Roseann Dewoskin  
Belle Peyser Kagan  
Ruth Orloff  
\*Dorothy Allen Stein  
\*Eugene Braun  
Sam Weiss  
Joseph Winicki  
Sarah Krasnow  
Sarah Clorfeine  
Beatrice Glube  
Morton Saroff  
Harriet Weber  
Zachary Williams  
\*Stuart Hugh Hayman  
Jeanette Lipson

## April 21 & 22

Samuel Osterbach  
Max Schapira  
Mark Schickler  
Sol Schultz  
\*Irving Spielman  
\*Aaron Fishman  
Margalit Mashiach  
\*Pearl Bronstein  
\*Bernice Bloom  
Dianne McAuliffe  
Dina Buch  
David Kahn  
\*Shirley Kessler  
Nancy Feuerstein Klein  
Donald Shafton  
Blanche Weiss  
Paul Sholem Amber  
Marilyn Goldzband  
Claire Rogal  
Shirley Seufferer  
\*Florence Spielman  
\*Lilian Haurowitz  
\*Vera Lehrman  
\*Myra Belford  
\*Mildred Dorris  
Isidor Markowitz  
Klara Susie Meyer  
Recha Meyer  
Joyce Prenner  
Shirley Schickler  
Sylvia Weider Amber  
\*Fannie Gruber  
Rose Feuerstein  
Albert Gottschalk  
\*Alvin Stein  
Z. Alex Veinbergs  
\*Rose Lawson  
Hy Kalmin  
Philip Luxemburg  
\*Al Meis  
Gertrude Oolie  
\*Nathan Rubenstein  
Amy Rubinstein  
Caryl Shapiro  
\*Paul Herzfeld  
Sadie Schwartz  
\*Henrietta Strauss

## April 28 & 29

Alan Greyson  
Beatrice Low  
Selma Paparian  
Erwin Rabin  
Sarah Kantor  
Minnie Weider Friedman  
\*Bea Shevitz  
Louis Kuh  
Dora Stengel  
Jacob Stengel  
Anne Chérin  
Sam Hamovitch  
\*Zehava Ben-Yehuda  
Duane Braasch  
Dr. Ira Fritz  
Albert Palasnick  
\*Aaron Rossman  
Irving Weissberg  
\*Benjamin Blank  
Leonard Burney  
Benjamin Evidon  
Sam Gwasdoff  
Joseph Weinberg  
Max Altman  
Gerald Apelman  
Ricky Cogan  
Gerald Sacks  
\*Sydney Shulman  
Sylvia Gabel  
Rene Landau  
Robert Rosenblum  
Jill Steiner  
Bob Tauber  
Anna Zubkoff  
Mary Anne Baker  
Joe Friedman  
Earl Phillips  
Jacob Feuerstein  
Phyllis Nye  
Alice Yawetz  
Dolores Dickstein  
Samuel Kushner  
Sky Infinity Schindler

\* designates a memorial plaque in the Sanctuary lobby





# In Our Temple Emanu-El Family

## APRIL BIRTHDAYS

4/1 Jessica Schindler Marlene Hamovitch	4/15 Maxine Gellens Benjamin Palasnick	4/23 Cynthia Solomon-Flynn Luna Sand
4/2 Alton Franco Gabiella Siperstein Travis Anderson Beverly Steres	4/16 Steve Naiman Ron Oberndorfer Nora Heckinger Steve Naiman	4/24 Ed Schloss
4/3 Allison Harris-Turk Rachel Sciammas	4/18 Alison Portner	4/25 Wendy Ponomarenko Jeff Lipinsky
4/4 Jeff Karel	4/19 Violet Schlagel	4/26 Brian Epstein Jennifer Handler Janine Cane Jacob Lin Claire Fritz Alia Rodman Olivia Solomon Marci Flores
4/5 Kerrie Aiello Irene Lubin Randy Socol Phyllis Naiman Aaron Cohn Dan Goldzband Carrie Colona David Golokow	4/20 Samuel Krasner	4/27 Ron Turner Joseph Cohen Lori Klase
4/6 Ken Freed	4/21 Sara Maltzman	4/28 Isla Dressler Emilie Mason Toby Hartman Shira Alvord Brooke Graham
4/7 Miles Teplin Eliaana Clavell Storer Sara Fefferman Kimberly Reisman Lois Shive	4/22 Larry Krasnow Randy Biegenzahn Aaron Levine Phoebe Sloane Talia Alvord David Nissan	4/29 Sadie Schmidt Sadie Alvord
4/9 Oren Patashnik Richard Erth Jordan Gaghagen		4/30 Randee Friedman
4/10 Sylvia Stevens Jeffrey Hall		
4/11 Joshua Laddon Steve Siperstein Fern Siegel		
4/12 Beth Mann Marshall Autry		
4/13 Adam Whinston Aria Hensley Susan Davis Vernon Berger		
4/14 Barbara Braasch Sarah Clavell Storer Rebecca Seufferer Cole Kaplan		
4/15 Mark Perino Dina Naiman		

## APRIL ANNIVERSARIES

4/4 Monique & Marc Silver	4/15 Joseph & Lois Rosenzweig
Howard & Jean Somers	4/16 Don & Dale Goldman
4/5 Rachael & Marshall Autry	Mike & Bobbi Rossman
4/6 Ed & Judy Applbaum	4/18 Jeffery & Nicole Herman
Patricia & Andreas Freund	4/20 Charles & Amy Spielman
4/8 Gregg & Lisa Cantor	4/22 Dave & Kim Belasco
Norm & Rosalyn Hegler	4/24 Rachel & Zachary Schlagel
4/12 Len & Marilyn Berger	4/27 Beth & Marc Mann
Lane & Steven Mashal	4/30 Claire & Natalie Fritz
4/13 Seth & Anita Hettena	Samuel & Roann Krasner



# Musical Theater Day Camp

## August 7-11

### 9 am to 3 pm

Do your kids love to sing and dance? Do you want them to connect to Jewish tradition in a fun and exciting way that will create a lifetime of memories and friendships? Then why not enroll them in our new Musical Theater Day Camp, YELL-adim Summer Stock!

Each day will feature acting, singing, and dance workshops, with training from top-tier San Diego artists, and will culminate in a performance for parents and families on Friday, August 11.

The YELL-adim Summer Stock is open to all children entering grades 3 through 12 in the Fall. The cost of this week-long program is \$300, which includes snacks, drinks, a pizza party lunch on Friday, and a souvenir cast t-shirt. This is a great way for students interested in the Musical Theater club to get a head start by learning the songs and choreography from our next musical play, "Maccabee," which details the story of Chanukah. All students participating in our Summer Stock program will be guaranteed a part in the "Maccabee" musical in the Fall (Temple members only).

For more information, please email Charlie Jirkovsky at [cjirkovsky@teesd.org](mailto:cjirkovsky@teesd.org)



# Women of Temple Emanu-El

by Barbara Chancy and Nancy Marcus, Co-Presidents



It's Spring! We wish you all a joy filled Pesach with lots of great foods! We hope you will join us for upcoming activities – watch for our flyers and notices in the weekly Temple emails. Our Nominating Committee is working to fill positions on our Board for the coming year. Do you have an hour or two a month and would like to help? Is there something you are interested in? We value your input!

We have had requests for more game nights (or days). We are planning a summer daytime Bunco game. Several women have asked us to start a Mah Jongg group. If you know how to play or would like to learn, please let us know and we will set it up. If you are interested in helping with the planning, we'll welcome you.

Our Board meets on Zoom the second Wednesday of each month at 4:45 pm and we finish by 6 pm. If you would like to attend a meeting, just let us know and we will send you the Zoom link. You do not have to attend every meeting, but when we are planning an event, we do want you to attend.

If you are interested in getting involved with the Board or any of our planned events, or have any questions, please reach out to Nancy at [wrj@teesd.org](mailto:wrj@teesd.org).



A Little History of WRJ

The Women of Reform Judaism (WRJ) has had six Executive Directors in its 110 year history. Our current Executive Director, Rabbi Marla Feldman, has been with WRJ for 11 years and is the first Rabbi to serve as head of our organization. Rabbi Feldman will retire at the end of June, and will be honored at a retirement celebration in Chicago at the end of this month. She has been a tremendous leader and worked with the WRJ Board on many new and innovative programs.

Rabbi Liz P. G. Hirsch will be our next Executive Director. She begins her new role on July 5, 2023. She is currently the Rabbi of Anshe Amunim in Pittsfield, MA, and founded RAC (Religious Action Center) Massachusetts. She was a key leader in the 2020 campaign to pass the Roe Act, protecting a woman's right to choose in Massachusetts. She served as the Rabbi and Director of URJ Camp Eisner, and had worked as a Legislative Assistant at the RAC in Washington D.C. Rabbi Hirsch writes frequently on social justice, spiritual practice, and trends in Jewish life. She will be a wonderful addition to WRJ and its mission of social justice and spirituality for women.

I am so grateful to so many people who were helpful to me during my long term illnesses. Rather than list the people whom I have already personally thanked, I want to share some of the ways they helped:

Brought over dinner, came over and walked with me, emailed, phoned, drove me to an appointment, helped me with an errand, brought a surprise cupcake, sent a card, went on a coffee or lunch date, meditated, put cream on my arms, ordered soup, took me to get a haircut and a manicure, gave me a hug, told me I was doing better, brought over a book, sat with me outside, gave my supportive husband Laurie some respite time, took me to visit a friend, blew bubbles with me in the backyard, played music, participated in a Zoom call, helped me to smile.

These kind gestures may seem simple, but they made an immense difference to me and are speeding my recovery. My thanks to all of you.

Bonnie Baron







## Helping to Repair the World

Your generous donations to Temple Emanu-El's Social Action Fund are used to serve the needs of the community, locally, nationally and internationally.

In March, funds were sent to the Religious Coalition for Reproductive Choice ([rcrc.org](http://rcrc.org)). Founded in 1974, this interfaith organization works to remove multiple barriers which impede people, especially those in marginalized communities, to access reproductive health care with respect and dignity. They bring the moral force of religion to protect justice through education and advocacy.

In April, we will allocate money to the San Diego Volunteer Lawyer Project ([sdvlp.org](http://sdvlp.org)), the county's oldest and most comprehensive pro bono legal services program for low income individuals, non-profit community organizations and others. SDVLP's goal is that all people enjoy equal justice and access to legal services without regard to economic status. They serve the most vulnerable members of our community, including the homeless, abused children, domestic violence victims, veterans, immigrants, those with HIV/AIDS, and elder abuse victims. More than 75% of their clients are women.

The Social Action Committee carefully screens all recipients to make sure money you donate to the Social Action Fund to continue the work of tikkun olam is spent wisely. We appreciate your donations, large or small, to help with this work.

## Safety Tips

By Greg Houska, *Safety/Security Committee Chair*

I know we have discussed several of the items below in previous articles, but it never hurts to review. Also, just to be completely open in my plagiarism, none of the below ideas/statements are mine, but were completely "borrowed" from the internet...hope you enjoy!

1. A spill, a slip, a hospital trip.
2. A tree never hits an automobile except in self defense.
3. Chance takers are accident makers.
4. Chances are the tree was there first. Steer clear.
5. Cook food, not yourself – use a potholder or mitt.
6. Designated driver = helpful. Designated drunk = not so much.
7. Do not invite a bear to your picnic. You probably taste better than you think.
8. Don't hesitate to ask dumb questions. They are easier to handle than dumb mistakes.
9. Don't forget to wear gloves; your butt might itch.







# Preschool Summer Camp

Play-based program with dedicated staff, themed sessions and water days!

**JUNE 19- AUGUST 4**

**\$530**  
2-WEEK SESSIONS

Core Program from 8:30am-1pm  
Extended Care available until 4:30pm

**PRICE FAMILY PRESCHOOL**  
TEMPLE EMANU-EL

## Yashar Koach

To Susan Davis, retired congresswoman from the House of Representatives in California's 53<sup>rd</sup> District, on the Rolando post office branch being renamed the Susan A. Davis Post Office in honor of her 20 years of public service.

To those who participated in the reading of Megillat Esther for Purim, and those who acted in our Purim Shpiel.

## TODAH RABAH

To Hamentashen Queen Star Laddon, to all who came to bake and to buy to provide campership funds for our students.

To all volunteers for the Purim Carnival who made the day a huge success.

To Barbara Pollack for her work on editing the bulletin.



## Torah School & Hebrew Classes

**April 2**—No Torah School (Spring Break)

**April 5**—No Hebrew Classes

**April 9**—No Torah School

**April 12**—No Hebrew Classes

**April 14**— B'nai Mitzvah Retreat Weekend—5:30pm-6pm

**April 15**—B'nai Mitzvah Retreat Weekend-12pm-5pm

**April 16**—Torah School 9am-12pm

**April 19**—Hebrew Classes Online 4 pm (in-person 5 pm)

**April 21**—Pajama Family Shabbat

**April 23**—Torah School 9am-12pm (7th Grade CJH Presentation)

**April 26**—Hebrew Classes Online 4 pm (in-person 5 pm)

**April 30**—Torah School 9am-12pm

## We'd love to share your simcha!

Do you have an engagement, a wedding or a new baby in your family? Share your happiness with the congregation! Please email the information to [publicity@teesd.org](mailto:publicity@teesd.org) to be included in an upcoming bulletin.



## Morgan Stanley

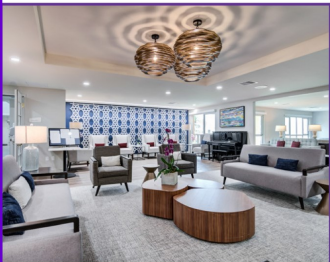


**Phil Bresnick**

Financial Planning Specialist  
Senior Vice President | Financial Advisor  
5464 Grossmont Center Drive, Suite 200  
La Mesa, CA 91942  
**619-668-4334**  
philip.bresnick@morganstanley.com  
www.morganstanleyfa.com/bresnickbresnick  
CA Insurance Lic. #0A05261 / NMLS #1401662

© 2021 Morgan Stanley Smith Barney LLC. Member SIPC.  
BC007 CRC 3881411 10/21

## Friendly Faces.



## Brand-new Spaces.

The bar for senior retirement living has just been raised. We are offering in-person tours of our newly-renovated spaces.

**Come by and see what you're missing.**

*Over 75 years of Senior Retirement Living  
in the Jewish tradition.*



**SEACREST VILLAGE**  
RETIREMENT COMMUNITIES

**seacrestvillage.org**  
**(760) 632-0081**

## CARS

Temple Emanu-El has signed on as a partner of CARS, a nonprofit organization that takes donated vehicles and returns 80% of the proceeds to the organization of the donor's choice. CARS was founded in 2003 and has donated millions of dollars to nonprofits across the country.

The process is simple: log on to [careasy.com](http://careasy.com) and follow the three easy steps. You can select Temple Emanu-El as your nonprofit of choice, provide the information about your vehicle and arrange for CARS to pick up at your office or home. They will work around your schedule and take care of all the paperwork. There is no cost to the donor and donations are tax deductible.

If you or someone you know has a vehicle they would like to donate, visit **[careasy.org](http://careasy.org)** to learn more about the process or contact anyone at the Temple office for assistance.

Thanks for your support.



## DOUGLAS M. GROSMARK, DMD

### FAMILY & COSMETIC DENTISTRY



- Veneers, Crowns, Cosmetic Bonding
- Implant Restorations
- Dentures & Partials
- General Dentistry
- Whitening

U.C. IRVINE SINCE 1985 TUFTS UNIVERSITY  
6398 Del Cerro Blvd., Suite 1  
San Diego, CA 92120  
**[gallerydental@yahoo.com](mailto:gallerydental@yahoo.com)**

**(619) 286-1181**  
fax (619) 286-1438

## HA-SOFER • THE SCRIBE

is published monthly by Temple Emanu-El  
6299 Capri Drive • San Diego, CA 92120

## BULLETIN DEADLINES

April 5 for the May issue  
May 5 for the June issue





DIAMONDS ♦ GEMS ♦ FINE JEWELRY ♦ CUSTOM DESIGN



**MATT MEIS**  
FINE CUSTOM JEWELRY

SPECIALIZING IN CUSTOM DESIGN  
WEDDING, ANNIVERSARY AND  
SPECIAL OCCASION FINE JEWELRY  
AND JEWELRY REPAIR



BY APPOINTMENT  
IN THE CONVENIENCE  
OF YOUR HOME OR OFFICE



(619) 218-1319 ♦ mattmeis.com ♦ matt@mattmeis.com



Proudly Serving Jewish Families  
For Over 37 Years

**Am Israel Mortuary**  
San Diego's "Only" Jewish Mortuary  
Family Owned and Operated  
For Three Generations

619-583-8850

[www.AmIsraelMortuary.com](http://www.AmIsraelMortuary.com)

**LGC**

**LINCOLN  
GUSTAFSON  
& CERCOS, LLP**

EXPERIENCE. INTEGRITY. RESULTS.

## For All Your Personal, Business and Estate Planning Needs

550 West C Street • Ste #1400 • San Diego, CA 92101  
(619) 233-1150

### **Darcie A.F. Colihan** Senior Associate

[dcolihan@lgclawoffice.com](mailto:dcolihan@lgclawoffice.com)

Ms. Colihan is a senior associate at LGC which has over 40 years of combined experience in Estate Planning, Trust and Probate Litigation and Trust Administration. Contact Ms. Colihan to get your estate plan in order today!



### **Thomas J. Lincoln, Esq.** Partner

Contact Mr. Lincoln for your Business and Personal Legal Consultation Including Employment, Insurance, Intellectual Property and Business Formation.

- Past President, Temple Emanu-El



8504 La Mesa Blvd  
La Mesa • CA • 91942

[Judefoxrealtor@gmail.com](mailto:Judefoxrealtor@gmail.com)  
DRE #01970577



Jude  
Fox

Realtor/Property Manager/Notary

**619.861.8852**

## **Gail L. Braverman, MA, MFT** *Individual, Couples and Family Counseling*



License #35281

5100 Marlborough Drive  
San Diego, California 92116

**(619) 282-4730**



# April 2023 Nissan—Iyar 5783

SUNDAY	MONDAY	TUESDAY	WEDNESDAY	THURSDAY	FRIDAY	SATURDAY
						April 1 • 10 Nissan
						Torah Study 9 am Shabbat Service Bat Mitzvah 10:30 am
April 2 • 11 Nissan	April 3 • 12 Nissan	April 4 • 13 Nissan	April 5 • 14 Nissan	April 6 • 15 Nissan	April 7 • 16 Nissan	April 8 • 17 Nissan
NO Torah School Introduction to Judaism 10 am		NO Community Jewish High	OFFICE CLOSING AT 1 PM NO Torah School NO Hebrew Classes	OFFICE & PRESCHOOL CLOSED Passover Festival Service 10 am CONGREGATIONAL SEDER 6 PM	Shabbat Service 6 pm	Torah Study 9 am Shabbat Service 10:30 am
April 9 • 18 Nissan	April 10 • 19 Nissan	April 11 • 20 Nissan	April 12 • 21 Nissan	April 13 • 22 Nissan	April 14 • 23 Nissan	April 15 • 24 Nissan
NO Torah School NO Introduction to Judaism		NO Community Jewish High	Pesach Festival Yizkor Service 10 am NO Torah School NO Hebrew Classes	OFFICE & PRESCHOOL CLOSED	B'nai Mitzvah Retreat Weekend Shabbat Service 6 pm	B'nai Mitzvah Retreat Weekend Torah Study 9 am Shabbat Service 10:30 am
April 16 • 25 Nissan	April 17 • 26 Nissan	April 18 • 27 Nissan	April 19 • 28 Nissan	April 20 • 29 Nissan	April 21 • 30 Nissan	April 22 • 1 Iyar
Torah School 9:00 am Introduction to Judaism 10 am Yom HaShoah JCC Commemoration Program 1 pm		Community Jewish High 6 pm		Recovery International 10 am Bridge with Benj 12:30 pm	Family Shabbat Service 6 pm	Torah Study 9 am Shabbat Service 10:30 am Adult Ed Movie 7 pm
April 23 • 2 Iyar	April 24 • 3 Iyar	April 25 • 4 Iyar	April 26 • 5 Iyar	April 27 • 6 Iyar	April 28 • 7 Iyar	April 29 • 8 Iyar
Torah School 9:00 am Introduction to Judaism 10 am		Drum Circle 3 pm Community Jewish High 6 pm	Torah School Hebrew Classes 4 pm & 5 pm	Recovery International 10 am Bridge with Benj 12:30 pm	Shabbat Service 6 pm	Torah Study 9 am Shabbat Service Bar Mitzvah 10:30 am
April 30 • 9 Iyar						
Torah School 9:00 am						

Co-President  
Co-President  
1st Vice Pres  
2nd Vice Pres  
Treasurer  
Financial Secretary  
Recording Secretary  
Immed. Past Pres  
Executive Past Pres

Marc Glazer  
Cathi Marx  
Matt Meis  
Stefani Lenett  
Jeff Schindler  
Trish Freund  
Ira Moskowitz  
Eric Rosenzweig  
Tom Lincoln

presidents@teesd.org  
presidents@teesd.org  
matt@mattmeis.com  
lenettlaw@cox.net  
jmrinc@cox.net  
tiski51@hotmail.com  
jerira75@gmail.com  
ej.rosenzweig@gmail.com  
tjlatty@aol.com

Senior Rabbi  
Associate Rabbi  
Executive Director  
Rabbi Emeritus  
Founding Rabbi  
Preschool Director  
Webmaster  
Bulletin Contact

Rivkah Marcus  
Benj Fried  
Shaun Copans  
Martin S. Lawson  
Morton J. Cohn z"l  
Janet Arkin  
Alec Irwin  
Publicity Committee

rabbi@teesd.org  
rabbibenj@teesd.org  
scopans@teesd.org  
rabmsl4745@gmail.com  
jarkin@teesd.org  
Irwin.alec.s@gmail.com  
publicity@teesd.org