



# HA-SOFER THE SCRIBE

Adar II—Nissan 5784 ג' אדר ב' - ניסן

April 2024

TEMPLE EMANU-EL • 6299 CAPRI DRIVE, SAN DIEGO, CA 92120-4632 • (619) 286-2555 •

## TEMPLE EMANU-EL'S MORTON J. COHN TORAH SCHOOL FUNDRAISER

### CABARET NIGHT 2024

**SATURDAY, May 4, 2024 • 6 PM**

**This one night live Cabaret will showcase great talent from our Temple members and the local community!**

**All proceeds will go directly to the Torah School. This is the Torah School's Primary Fundraiser.**



#### SPONSORSHIP OPPORTUNITIES

**\$1000 – PRODUCER**

**\$500 – DIRECTOR**

**\$250 – WRITER**

**\$100 – LIGHTING DESIGNER**

**\$50 – MAKEUP ARTIST**

**\$25 – STAR**



**Tickets and sponsorships can be purchased online at <http://teesd.org>**

### TICKETS

**\$30 Adults/\$20 Kids**

**Tickets can be purchased online at <http://teesd.org>**

### CONCESSIONS OPEN and PRE-SHOW at 5 PM

Pre-Show Entertainment TBA performing from 5-6 PM

### CABARET SHOW at 6 PM

**Friday, April 5**  
Shabbat Service 6 pm

**Saturday, April 6**  
Shabbat Morning Service 10:30 am  
Sh'mini, Leviticus 9:1-11:47  
Ezekiel 45:16-25

**Friday, April 12**  
Shabbat Service 6 pm

**Saturday, April 13**  
Shabbat Morning Service 10:30 am  
Tazria, Leviticus 12:1-13:59  
II Kings 4:42-5:19

**Friday, April 19**  
Family Shabbat Service 6 pm  
Teacher Appreciation

**Saturday, April 20**  
Shabbat Morning Service 10:30 am  
M'tzora, Leviticus 14:1-15:33  
Malachi 3:4-24

**Tuesday, April 23**  
Pesach Festival Service 10 am  
Community Seder 5 pm

**Friday, April 26**  
Shabbat Service 6 pm

**Saturday, April 27**  
Shabbat Morning Service 10:30 am  
Chol HaMo-eid Pesach, Exodus 33:12-34:26  
Ezekiel 37:1-14

**Monday, April 29**  
Pesach Concluding Service 10 am  
Yizkor Memorial Prayers



## From Our Temple President

by Matt Meis



In March, I was fortunate to have a wonderful Jewish learning experience. I attended the 25<sup>th</sup> Annual Union for Reform Judaism Scheidt Seminar for Temple presidents and presidents-elect. For four days, 85 of us, from Kodiak, Alaska, to Miami, Florida, and from Providence, Rhode Island, to San Diego, California, met in Atlanta, Georgia. Led by URJ president Rabbi Rick Jacobs and others in their senior staff, we learned about all the things we face as leaders in our local congregations. From finances to community organizing, from philanthropy to ethics codes, we shared ideas in meeting rooms and dining rooms. I had the opportunity to share stories with other presidents from across the US about what we are all doing to make our Temples wonderful places to worship, educate our children, and gather with friends.

I hope to be able to put much of what I experienced into action here at our congregation. I have a vision of where I'd like us to go as a Board of Directors and as a community. And together with my fellow Board members, it is our collective goal to lead us there together.



## Shaun Speaks...



Shaun Copans,  
Executive Director

This month, I am using this space to highlight a (somewhat) new nonprofit organization that is doing incredible work here in San Diego – the Kindness Initiative.

Established in 2020, the Kindness Initiative aims to address the unmet needs of Vulnerable Jewish Households. Studies show that over 20% of the local Jewish population face either one-time or regular financial and housing insecurity – approximately 12,000 individuals.

The Kindness Initiative partners with several Jewish organizations (Federation, JFS, etc.) to provide community education, collaboration and support, affordable housing, employment assistance and much more.

If you know someone who qualifies for their programs or support services, visit [kindnesssd.org](http://kindnesssd.org). Lastly, as with most nonprofit organizations, donations and volunteer support are paramount to ensure their growth and success. Additional information for donors/volunteers can also be found on their website.



# Pesach 2024

Congregational Seder

April 23 at 5 pm

Adults \$60—Children (4-12) \$20—Children (3 and under) Free

Please sign up at [teesd.org](https://teesd.org).

## Congregational Seder Menu\*

### Starters

Matzah

Haroset

Eggs

Parsley

Horseradish

Chopped Liver

Baba Ghanoush

Olives, Pickles & Fresh Vegetables

### Soup

Matzah Ball Soup

### Dinner Buffet

Apricot Chicken

Bubbie's Brisket

Sephardic Matzah Pie

Mashed Potatoes

Vegetarian Tzimmes

Steamed Green Vegetables

Salad

### Dessert

Macaroons

Chocolate Toffee Matzah

Fresh Fruit

*\*Menu is subject to change  
based on availability of ingredients  
at time of preparation.*



## Mitzvah of the Month – Infant Items for Gently Hugged



In today's economy, it can be difficult to provide the necessities that keep a new baby warm and thriving during the crucial first year of his/her life. Two nurses working in the field of public health noticed this and decided to do something about it. They founded Gently Hugged ([gentlyhugged.org](http://gentlyhugged.org)), an organization that distributes appropriate items to those in need. The idea is that those families who have the good fortune to enjoy excess clothing for their infants (some items perhaps worn once or twice before the baby outgrows them) can share them with others. Gently Hugged serves families with children ages preemie to 18 months.

Please join the Temple's Social Action Committee Mitzvah of the Month, which will collect clothing and other items for Gently Hugged. Please bring them to the special Gently Hugged barrel in the lobby of the Temple office building.

For more information, contact coordinator Jean Seager at [socialaction@teesd.org](mailto:socialaction@teesd.org).

### Preemie to 18 months sizes only Gently used or new

Especially needed right now for both boys and girls:

- Sleepers for newborns
- Onesies for newborns

Also collecting:

- Clothing, including hats, jackets, pajamas, hats
- Bibs
- Blankets
- Towels, washcloths
- Board or cloth books



## Helping to Repair the World

Your generous donations to Temple Emanu-El's Social Action Fund are used to serve the needs of the community, locally, nationally and internationally.

In March, funds were sent to the Jacobs and Cushman San Diego Food Bank. Of San Diego County's 3.3 million residents, over 1 million people face nutritional insecurity. The Jacobs and Cushman Food Bank ([sandiegofoodbank.org](http://sandiegofoodbank.org)) is the largest hunger relief organization in San Diego County. Last year, they distributed 63 million pounds of food. On average, the Food Bank serves 500,000 people per month in the county and partners with 500 non-profits.

In April, we will allocate money to the United Nation's Children Fund ([unicefusa.org](http://unicefusa.org)), which was established in 1946. They now work in over 190 countries and territories, helping save more children's lives than any other humanitarian organization by providing health care and immunizations, clean water and sanitation, nutrition, education, emergency relief and more. Our donation will be earmarked to support vulnerable children and families in Ukraine.

The Social Action Committee carefully screens all recipients to make sure money you donate to the Social Action Fund to continue the work of tikkun olam is spent wisely. We appreciate your donations, large or small, to help with this work.



## Torah School

**Temple Emanu-El Torah School will be CLOSED for  
Spring Break from  
Wednesday, March 27 through Sunday, April 7**

*Hebrew classes will resume on Wednesday, April 10.  
Torah School will resume on Sunday, April 14.  
Have a safe and peaceful Spring Break.*

### Gun Safety Anyone?



Are you interested in learning all about Gun Safety? Temple Emanu-El is offering a Gun Safety Class taught by our very own Security Guard Kurtis Ramsey.  
**Sunday, April 14 and Sunday, April 21  
2:00 pm - 3:30 pm - Social Hall**

Registration cost and class outline:  
\$50 Safety class - Sunday, April 14 Temple Emanu-El in the Social Hall  
\$100 Shooting Range with instructor - Sunday, April 21  
Jamul Shooting Range - class size is limited. Please register today.

Sign up through our website at [teesd.org](http://teesd.org)

### Tapestry:

#### **A Day of Jewish Community, Learning and Exploration Sunday, April 7**

Tapestry returns this spring to the Lawrence Family JCC with a fresh new look and feel! The event will surprise, inspire, cultivate and enhance your love of learning with educators from around the country, experiential learning opportunities and engaging sessions.

The event will begin with a light breakfast at 9 am, and includes your choice of three different learning sessions, lunch, and an ending celebration at 3:30 pm with live music, drinks and dessert. Between sessions, trainer Jodi Bartlett will lead brief stretching exercises to keep your body moving. There are seven varied learning tracks to choose from, and you may select each class from a different track. Sessions are on a wide range of topics, such as Israel and the Middle East, Jews on campus, immigration, generative AI and Jewish thought, the Holocaust, music, theater and more.

The cost is \$36 per person for the full day or \$30 for JCC members. For a complete schedule of the sessions, please see [lfjcc.org/cjc/tapestry](http://lfjcc.org/cjc/tapestry).





## Torah for the Table: Man of La Mancha Wednesday, April 10, 6 pm

We welcome the return of this popular program, this year presented with a twist - think Jewish learning and music meets culinary school. We will explore musicals, some with obvious Jewish themes, some not so much, created by Jewish composers, lyricists and authors, all with links to Jewish food that matches the locale.

Classes will be held once a month at the Temple on Wednesday evenings, and will be taught by Rabbi Devorah and Barry Lander. The cost is \$36 for an individual class. The series continues through June. To see the full list of dates and to register, please see the Temple website.

Please check your email messages for additional information and other upcoming Adult Ed programs. For questions, contact Rabbi Benj Fried at [benjfried@teesd.org](mailto:benjfried@teesd.org)

\*\*\*\*

## Tikkun Ha'Am – Repairing Our People After October 7th Class Begins May 2

Contemporary Judaism is facing unprecedented challenges. Today's Jews have the opportunity and the obligation to reclaim a Jewish vocabulary of sanctity, activism and the desire to stand apart from today's world.

Rabbi Marty Lawson will teach this class each Thursday, from 12:30 – 2 pm in the Temple Library. The class will begin on May 2 and end on June 6. We will use *Tikkun Ha'Am: Israel and the Crisis of Liberal Judaism*, by Rabbi Jeffrey K. Salkin. It is available from Amazon and other booksellers both in paperback and Kindle versions.

Rabbi Salkin challenges us to rethink contemporary Jewish identity, Israel, spirituality, and popular culture. He invites readers to think deeply about the contemporary world, showing that Judaism has a stake in our world's political, religious and cultural battles.

Cost of the class is \$36. Please sign up on the Temple website, or call the office to register.

## JFS College Avenue Center

Activities, exercise classes and special events are held through the Aging and Wellness Program of Jewish Family Service for those age 60 and over at Temple Emanu-El. The College Avenue Center is open Monday through Friday, 10:15 am—1 pm. Lunch is available each weekday. The suggested donation for seniors is \$4 per person, or \$7 per person for all others. Most activities are available at no charge. To reserve your place for classes, please call (858) 637-3725.

### Programs in April include:

Mondays at 10:30 am — Trivia (engages participants with thought-provoking trivia questions)

Tuesdays at 10:15 am — Tai Chi (learn the techniques, postures, and movements of Tai Chi)

Tuesdays at 10:30 am — Current Events (engages discussions about recent national events)

Wednesdays at 10:30 am — CAC Fitness (a series of body-weight exercises)

Thursdays at 10:30 am — Wellness Day (wellness presentations, art, special events)

Fridays at 10:15 am — Cantantes Latinos (music, singing, and fun)

Staying for lunch? Please reserve your meal in advance by calling 858-637-7320



## Adult Education

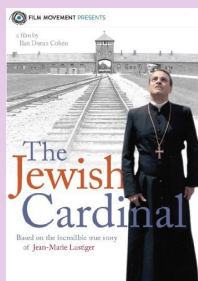


Supporting Lifelong Jewish Learning

The Jews Encounter Diversity Film Series

### ***The Jewish Cardinal***

Saturday, April 13, 7 pm  
Temple Sanctuary, In Person



The Jewish Cardinal tells the amazing true story of Jean-Marie Lustiger, the son of Polish-Jewish immigrants, who maintained his cultural identity as a Jew even after converting to Catholicism at a young age, and later joining the priesthood. Quickly rising within the ranks of the Church, Lustiger was appointed Archbishop of Paris by Pope Jean Paul II - and found a new platform to celebrate his dual identity as a Catholic Jew, earning him both friends and enemies from both groups. When Carmelite nuns settle down to build a convent within the cursed walls of Auschwitz, Lustiger finds himself a mediator between the two communities - and may be forced at last to choose his side.

Ilan Duran Cohen directed the film, which was made in France in 2013.

Laurie Baron will introduce the film and facilitate the discussion after it is screened. No registration is necessary for the evening, and there is no charge.

Bring your own dinner and eat with friends in the Social Hall at 6 pm before the film is shown.

\*\*\*\*

### **Torah Study**

**Saturday mornings—9:00 am In Person and on Zoom**

An in-depth study of Torah portions and commentary. Come in person or connect from home.

Zoom links will be provided in the Temple's weekly emails.

\*\*\*\*

### **Coffee with the Rabbi**

**Wednesday mornings, 11 am In person and on Zoom**

Drop in when you can for a lively discussion on current events. No registration is needed— just an interest in Jewish learning. Zoom links for Torah Study and Coffee with the Rabbi will be provided in the Temple's

weekly emails.

\*\*\*\*

Please consider a contribution to the Adult Education Fund to help support the Committee's efforts to continue to engage speakers and provide the high quality of life-long learning experiences that have become an integral part of Temple Emanu-El. Program costs are continuing to rise, and we need your support.



# Israel Engagement

By Rhonda Amber

While we were walking in Tel Aviv, not too far from Hostage Square, the red light started blinking. Jonathan was ahead of me, already in the middle of the road. I stopped at the crosswalk. A woman stopped immediately behind me exclaiming: “it’s a 500 shekel fine!” I turned, we acknowledged one another and started to chat.

Israelis, we talk to each other. We noted accent, dress (non-religious), and placed each other’s nationality. She, a Sabra in her 50s, colorfully dressed and coifed asked me why we were there. She thanked me just for physically being in Israel. She thanked us for supporting Israel and being messengers.

Before the light changed to green, she removed the dog-tag necklace that she was wearing and placed it up over my head and around my neck and said, “Remember Israel”.

My solidarity tag is inscribed with both Hebrew and English wording.



הלב שלנו שבוי בעזה = Our heart is hostage in Gaza

BRING THEM HOME-NOW!

“Even if we don’t make room in our hearts for the Palestinians (regardless of how they see us), we do need to recognize that the fate of Israel and the Jewish people is inextricably tied to theirs and that consideration for their basic humanity for them is not only a sign of empathy and humanity, it is a sign of who we are as a people, and will be the measure by which we are defined for generations to come.”

Josh Weinberg of ARZA, March 8, 2024





## FREEDOM

Each month, my article for the Temple Bulletin has given me the freedom to share with you my mental health journey: how I got sick and more importantly, how I got well. I feel safe telling my personal story in hopes that it will help others. As I tell my story of freedom, I share that I am not my illness. It is not who I am; it's something I deal with, as we all do in one way or another. I like to think that through the Recovery International method, I'm able to manage the symptoms that trigger my behavior so that I can live an active life and reduce stigma.

In February, we paired with our Social Action Committee to collect socks at our regional conference. We collected 800 pairs of new socks, which were distributed by the committee to a variety of local organizations. Members of the committee and the Temple came to support us at the Meet and Greet event.

I would encourage you to come our Recovery International Meeting, held every Thursday, 10 am, in the Temple Library in person. Other meetings in the community or on Zoom are listed on our website. Remember that RI doesn't take the place of the professionals. RI gives tools to use when you are in symptoms.

Coming Events:

NAMI Walk at Liberty Station, Saturday, April 27. Join our team: Stigma Stompers.

SPC Faith Breakfast, Thursday, May 16. Rabbi Benj will be a speaker on the panel.

For any questions, please contact our office by phone at (619) 383-2084, or by email at [SanDiego@recoveryinternational.org](mailto:SanDiego@recoveryinternational.org). More information is on our website, [recoveryinternational.org](http://recoveryinternational.org).

## Hunger Project at St. Vincent de Paul Begins 38<sup>th</sup> Year

The Hunger Project started its 38<sup>th</sup> year on March 10, 2024. It is amazing that the project Joan Kutner began in 1986 is still operating today, inspiring guests and volunteers alike. Temple Emanu-El has partnered with Congregation Beth Israel since the very beginning of this project. Temple Emanu-El supplies most of the volunteers for the first Sunday of each month. It has been wonderful to see volunteers from the early days of the project coming back with their children and their grandchildren.

The Paul Mirabile Center (PMC) at St. Vincent dining room is open and volunteers are needed as we serve each Sunday morning in the remodeled room. All volunteers, whether from Emanu-El or not, need to create an account at Father Joe's website, and sign up for the date you would like to attend at:

<http://congregationbeth.neighbor.volunteerhub.com/>

Please sign up and join us on a Sunday to make a difference in our community. High school students who are required to provide community service hours can get a letter signed on the morning they work, and Bar/Bat Mitzvah students who need service projects are very welcome. Contributions to the Social Action Hunger Project Fund go specifically to support our work on Sundays.

For any questions, please contact Jennifer Nemeth at [socialaction@teesd.org](mailto:socialaction@teesd.org).



## Community Corner

### A Three Dimensional Life

by Gail L. Braverman, M.A., LMFT, and Temple Board Member

I recently found an art piece my mother made, which I had tucked away in a cupboard. It is a form of art where you cut out and build up prints to make three-dimensional art.

My mother Ruth Bobrof's favorite artist was the Dutch painter Anton Pieck. The very fine details in his prints inspired her to spend hours cutting out and gluing small images on top of each other until they popped right off the page to her satisfaction.

Ruth had an edge of defensiveness to her. While she loved fiercely, deeply and committedly, she was also filled with anger, self-pity and resentment.

My mother taught me we are not all one thing, we human beings. We have both the good and bad angels riding on our shoulders and they struggle to see who will win. Sometimes the good angel takes the lead and sometimes the bad angel wins by a nose.

About two years before my mother died, she announced to me she wanted to be kind. I just listened and then over the next several months I watched her do just that.

My mom did three-dimensional art and she lived a three-dimensional life. She wasn't all bad or all good. She was just who she was. She wasn't out to prove anything, or make excuses or make empty promises. She said what she meant and meant what she said. She taught me we all have multiple layers to our personalities, and that was ok. She left our family the gifts of grit, guts, chutzpah, resiliency and enduring love.

I, too, wrestle with the good and bad angels just like my mom.  
I look at my hands that are aging just like my mom's.  
I, too, have multiple dimensions to myself, just like my mom.  
And if I am very lucky, I will end up being kind, just like my mom.

Her memory will forever be a blessing.

**Reflection:** Sometimes we connect more with people through our shortcomings than our accomplishments.

**Today's Practice:** Can I accept myself with both my good and not so good angels?

I welcome your comments: [gbrave3333@aol.com](mailto:gbrave3333@aol.com)



# Contributions

*Contributions received after the first of the month will be published in the next month's bulletin.*

*Commemorate a life cycle event or remember a loved one with a donation to one of the Temple's specially designated funds.*



## Mazal Tov

To the winners of the Opportunity Drawing

Grace Sherr \$1,800

Ellen Stein \$360

Joanne Ellison \$180

## Todah Rabah

To Barbara Pollack for her work on editing  
the bulletin



# YAHREIT OBSERVANCE

*Zecher Tzadik Livracha* – The Memory of the Righteous is a Blessing  
The following yahrzeits will be commemorated at Shabbat services:

## April 5 & 6

Gerald Hoffman  
Louis Shapiro  
Cyril Saul Tukeman  
Stanley Willner  
Louis Barron  
Robert Fitzgerald  
Gerald Licht  
Aaron Sam Lipshitz  
Allan Schreiber  
Ida Zitsman  
Rachell Clavell  
Gus Eben  
Syd Glassberg  
Harry Kantor  
Francine Schuster  
Howard Cohen  
\*Jacob Seltzer  
George Sinner  
Claudia Williams  
H. Robert Beitscher  
Hans Low  
\*Ben Fishman  
Hilda Benn  
Philip Bergman



\* designates a memorial plaque in the Sanctuary lobby

## April 12 & 13

Renee Braasch  
\*Julius Cohen  
Rebecca Kerdie Levine  
\*Hymie Lubey  
George Barbarosh  
\*Roseann Dewoskin  
\*Bobbie Goldberg  
Alice Oberndorfer  
Sol Wortman  
\*Sam Braverman  
Koert (Court) Maher  
Lillie Lipsman  
Robert Passov  
Raymond Scribner  
Caroline Lore Bruch  
Ellen Fraser Stanton  
Melvin Michel  
\*Jenny Spielman  
Nechama Immergut  
\*Lillian Connor  
Rikki Rosalind Friedman  
Joy LeBus  
\*Joel Kaplan  
Michael Graham Bloom  
Morris Schwartz  
\*Pearl Wolkoff  
Hersh Frydman  
Virginia Lee Hicks  
Grace Pollak

## April 19 & 20

Arnold Saltzman  
\*Eugene Braun  
Harold Copans  
\*Sarah Katz  
\*Gussie Singer  
Joseph Winicki  
Sarah Clorfeine  
Beatrice Glube  
\*Lilian Hauowitz  
\*Stuart Hugh Hayman  
Joan Croland  
\*Dorothy Allen Stein  
Harriet Weber  
Zachary Williams  
Samuel Osterbach  
Sol Schultz  
\*Joseph E. Sousa  
\*Irving Spielman  
Samuel Schwartz  
\*Anne Silverstein  
\*Jacob Weiss  
James Martin Welch  
Dina Buch  
David Kahn  
\*Shirley Kessler  
Nancy Feuerstein Klein  
Marvin Blankfeld  
Donald Shafton  
Blanche Weiss  
\*Sam Weiss  
\*Bernice Bloom  
Ann Colen  
Marilyn Goldzband  
Sylvia Hartnick  
Margalit Mashiach  
Claire Rogal  
Shirley Seufferer  
\*Florence Spielman  
\*Myra Belford  
\*Mildred Dorris  
Bill Hamovitch  
Isidor Markowitz  
Joyce Prenner  
Shirley Schickler  
\*Henrietta Strauss

## April 26 & 27

\*Benjamin Blank  
Jean Coolik  
Rose Feuerstein  
Clarence Plank  
\*Alvin Stein  
Z. Alex Veinbergs  
Sarah Krasnow  
Philip Luxemburg  
\*Al Meis  
Gertrude Oolie  
\*Nathan Rubenstein  
Amy Rubinstein  
Sidney Dashevsky  
Lewis Anfanger  
Rabbi Steven Fisdell  
Gail Dieterichs  
Alan Greyson  
Beatrice Low  
Selma Papanian  
Ruth Bobrov Glater  
Tillie Cooper  
David Lander  
Gittel Shefshick  
Louis Kuh  
Duane Braasch  
Ben Bratman  
Dr. Ira Fritz  
\*Fannie Gruber  
Sam Gwasdoff  
Joseph Craig Kossan  
\*Philip Learner  
Albert Palasnick  
Irving Weissberg  
Max Altman  
Leo Goldberg  
Gerald Sacks  
\*Sydney Shulman



# In Our Temple Emanu-El Family

## APRIL BIRTHDAYS

4/1	Marlene Hamovitch Jonah Kochman	4/9	Daniella Frederick Richard Erth	4/17	Sara Gerwin	4/26	Jennifer Handler Jacob Lin
4/2	Travis Anderson Alton Franco Gabriella Siperstein	4/10	Jordan Gaghagen Oren Patashnik Jeffrey Hall	4/18	Alison Portner		Alia Rodman Olivia Solomon Heaton Livingston
	Beverly Steres		Sylvia Stevens	4/19	Violet Schlagel Isaac Tirouda Leo Castillo	4/27	Joseph Cohen Paul Hartwell Lori Klase
4/3	Rachel Sciammas		Elana Baron	4/20	Samuel Krasner		Ron Turner
4/4	Jeff Karel	4/11	Joshua Laddon		James Glicker	4/28	Shira Alvord Brooke Graham Toby Hartman Emilie Mason Charles Dashevsky
4/5	Kerrie Aiello Aaron Cohn Carrie Colona Dan Goldzband David Golokow Irene Lubin Phyllis Naiman Randy Socol Jessica Frederick	4/12	Fern Siegel Steve Siperstein Beth Mann	4/21	Robbie Turner Robin Rubin		
		4/13	Susan Davis Adam Whinston	4/22	Talia Alvord Randy Biegenzahn Larry Krasnow Aaron Levine	4/29	Sadie Alvord Sadie Schmidt Luke Bergmann Alexis Persin Zayn Farook
4/6	Ken Freed	4/14	Barbara Braasch Sarah Clavell Storer	4/23	David Nissan Penny Arenson Carsyn Scott	4/30	Randee Friedman
4/7	Paul Arenson Jill Cayelli Eliana Clavell Storer Sara Fefferman Kimberly Reisman Lois Shive Miles Teplin	4/15	Cole Kaplan Rebecca Seuferer Maxine Gellens Dina Naiman Benjamin Palasnick Mark Perino Nora Heckinger Steve Naiman Ron Oberndorfer	4/24	Ed Schloss Jeff Lipinsky Wendy Ponomarenko		
		4/16	Steve Naiman Ron Oberndorfer	4/25	Janine Cane Brian Epstein Claire Fritz		

## APRIL ANNIVERSARIES

4/4	Howard & Jean Somers	4/16	Dale & Don Goldman
4/6	Ed & Judy Applbaum	4/18	Jeffrey Herman & Nicole Barvic
4/8	Gregg & Lisa Cantor	4/20	Amy & Chuck Spielman
4/8	Norm & Rosalyn Hegler	4/22	Dave & Kim Belasco
4/9	Edward Falk & Hannah Weinstein	4/23	Rose Sheppard & Madeline Marvin
4/12	Len & Marilyn Berger Lane & Steven Mashal	4/24	Rachel & Zachary Schlagel
4/13	Anita & Seth Hettena	4/27	Beth & Marc Mann
4/15	Joseph & Lois Rosenzweig	4/30	Natalie & Claire Fritz Roann & Samuel Krasner



Temple members who are able to go above and beyond the standard Temple dues requirement enable us to continue our high standard of services and programs for all members, regardless of means. Please consider joining at one of the following levels:

## Chai Circle



All levels of Chai Circle and Life Membership will have their names published at High Holy Days and in HaSofer (The Scribe). For more information about our programs, please call the Temple office at (619) 286-2555.

## Life Membership



## Add Your Strength to Ours!

Below is a list of contacts for committees, projects and other ways to become more involved in the life of Temple EmanuEl. Please reach out to any of these groups to learn more about their work, and how you can become involved.

- **Adult Education**      [adulthood@teesd.org](mailto:adulthood@teesd.org)  
Rabbi Benj Fried      (619) 286-2555
- **Advocacy**      [advocacy@teesd.org](mailto:advocacy@teesd.org)  
Barbara Learner  
Janice Steinberg
- **Budget and Finance**      [financecommittee@teesd.org](mailto:financecommittee@teesd.org)
- **Caring Community**      [caringcom@teesd.org](mailto:caringcom@teesd.org)
- **Endowment**      [endowment@teesd.org](mailto:endowment@teesd.org)  
Bob Rubenstein
- **House & Grounds**      [housegrounds@teesd.org](mailto:housegrounds@teesd.org)  
Steve Naiman
- **Library**      [office@teesd.org](mailto:office@teesd.org)
- **Membership**      [membership@teesd.org](mailto:membership@teesd.org)  
Amy Blum
- **Mental Health**      [mentalhealthcom@teesd.org](mailto:mentalhealthcom@teesd.org)  
Marie Raftery
- **Mi Shebeirach Tapestry**      [tapestry@teesd.org](mailto:tapestry@teesd.org)  
Claire Fritz
- **Preschool**      [preschool@teesd.org](mailto:preschool@teesd.org)
- **Publicity**      [publicity@teesd.org](mailto:publicity@teesd.org)
- **Safety/Security**      [security@teesd.org](mailto:security@teesd.org)  
Greg Houska
- **Social Action**      [socialaction@teesd.org](mailto:socialaction@teesd.org)
- **Torah School**      [thscom@teesd.org](mailto:thscom@teesd.org)  
Jane Muschenetz  
Patricia Cardozo
- **Women of Reform Judaism**      [wrj@teesd.org](mailto:wrj@teesd.org)  
Nancy Marcus  
Barbara Chancy
- **Youth**      [rabbibenj@teesd.org](mailto:rabbibenj@teesd.org)  
Rabbi Benj Fried



# Women of Temple Emanu-El

by Barbara Chancy and Nancy Marcus, Co-Presidents



We are very excited to offer a Women's Seder on Wednesday, April 17, at 6:15 pm. Join us for this special evening as we read through a Haggadah that is centered on women. We will focus on just the seder elements. No main meal will be served, but we'll still have a great time, and you will go home with ideas on how to make your Seder even more meaningful. The cost for the evening is \$18.00 per person.

April's events also include a group going to see the play "Ride" at the Old Globe on Sunday, April 28, for a 2 pm matinee. Tickets are \$50.00 per person. Those interested will join for a no-host dinner afterward. Your check is your reservation, or you can pay on the Temple website donation section – pull down the Sisterhood tabs.

Looking forward to next month, we will have another evening Bunco game on Wednesday, May 1, at 6:15 pm. The cost is \$18.00, which includes prizes, a light dinner and security.

We have sent Scholarship Applications to our graduating high school seniors. If you or your child did not receive an application, please contact us.

Special thanks go to Flo Bornstein, for creating the beautiful Sisterhood Shabbat Service, and to Michelle Jirkovsky for organizing the lovely music. We appreciate all the time and effort they put in for the meaningful evening to celebrate International Women's Day.

The Artisan Festival Committee is beginning to plan next year's event. It is a lot of fun and you'll make more friends. Send us an email if you would like to work on it.

Our Nominating Committee is working to set next year's Board. If you are ready to stick your toe in the water, just let us know if you are ready to try to see if you enjoy working with us. You can email us with any questions you have. We would love to have you join us.

Monday Mah Jongg continues. We have a Learner's Table every week taught by Marcia Berneger, and four other games going for more experienced players. We do have a lot of fun! Our new 2024 cards should be arriving soon.

To contact us about the Women's Seder, theater tickets, scholarship applications, joining the Board, or any other questions, please email us at [wrj@teesd.org](mailto:wrj@teesd.org).

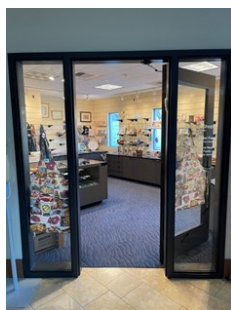
When we come together as a Community of Women, we are Stronger Together!

## Claire Handler Gift Shop

Our Temple Gift Shop, located in the lobby of the Sanctuary building, is a perfect place to find a wonderful variety of items for all occasions. Whether you are looking for something new to enhance your holiday celebrations or a gift to express appreciation to a host or for someone establishing a new home, you will find a great selection. Right now, we have new seder plates, cooking kits, mezzuzot, Shabbat candlesticks, dripless candles, and so much more.

The Gift Shop is available any time the Temple office is open – just come into the office for assistance. It is also now open on Sundays when Torah School is in session.

We are looking for a few more volunteers. Training is provided, and the schedule is flexible. Contact Natalie Fritz at [office@teesd.org](mailto:office@teesd.org) for more details.



## The FBI Files

by Greg Houska, Safety/Security Committee Chair

This month, I thought I'd shine a bit of light on my old agency. As much as the FBI is trying to make itself more transparent, there are still a lot of partial truths and unknowns floating around about what the FBI does and how they do it.

When I decided to become an agent back in 1988, I was a frustrated CPA working for a large firm in San Francisco. I had always wanted to go into law enforcement, and held the FBI in the highest esteem (and I still do), but I was thinking why would they hire me? The FBI looks for experience from those in various disciplines, including engineers, lawyers, language specialists, accountants, former military and law enforcement officers, which makes for a pretty diverse workforce. I remember walking into their headquarters for my first interview and immediately being buzzed into the office by the receptionist without anyone checking my ID. Security wasn't all that good back then or perhaps I already looked like an FBI agent. My second observation was that many of my fellow applicants looked pretty normal, and so did the agents.

Luckily for me but not the country, the banking, and savings and loan industries were a mess, with the failure of many financial institutions due to allegations of fraud. As a result, I was fast tracked through the process in only eight months. It often takes two or more years for some people to be hired if they are from a discipline not in demand. In May of 1989, I was sitting in a classroom at the Marine base in Quantico, Virginia with thirty or so other wannabees, wondering what I had gotten myself into, but two weeks later, I knew I had made the right decision.

Prior to the Academy, I had a forty hour a week job, a long commute, a girlfriend, car maintenance and lots of responsibilities, but now I was being paid to attend classes to learn about serial killers, how to conduct investigations and process crime scenes, firearms training and self defense, with no lawn to mow or other responsibilities from the old world. Quantico was complete with a movie theater, great food, a bar, and was located on the Marine base an hour or so from Washington, D.C. Weekends were completely free to explore D.C. or the many civil war battlefields in the area. The FBI even had a whole town called "Hogan's Alley" set up with a bank, motel, movie theater, saloon, houses, offices and apartments in which we could practice vehicle stops and arrests, conduct interviews with actors who pretended to be victims or subjects of various crimes. Better to mess up with a fake Bonnie and Clyde than the real one! And when an agent was shot, it was a blank and not a real bullet.

I will continue next month with more on the Academy and life as a new FBI agent here in San Diego.





## Mailbox

It is our privilege to share deep gratitude for your generous contribution in support of our relief efforts for vulnerable Jews across the globe.

It is your support that allows the Joint Distribution Committee (JDS) to fulfill its sacred mission of lifting Jewish lives and strengthening communities around the world by providing humanitarian aid and community building resources where they are needed most.

As we enter our second century of life-saving work together, we extend our sincere appreciation for your compassion, trust and support for JDS and the vulnerable populations for whom we care daily.

Annie Sandler, President

Ariel Zwang, CEO

American Jewish Joint Distribution Committee

*Your generous contributions to the Social Action Fund make it possible to respond to needs in our community and around the world.*

Thank you so much for your donations in February. Our Basic Needs Center is so grateful for your support. Our students picked up the donations almost immediately, so we know there was a great need for these items.

Nydia Dominguez, Basic Needs Coordinator

San Diego City College Basic Needs Center

*In February, the Social Action Committee coordinated our Mitzvah of the Month collection of sheets, pillowcases, blankets, kitchen and bath towels to support students at City College, many of whom are setting up their first apartments as adults. Thank you to all our donors for a wonderful response to this collection.*

# Preschool Summer Camp Registration is open!



JUNE 10-  
AUGUST 2



CALL THE  
PRESCHOOL  
FOR MORE  
INFORMATION.

Core Program from 8:30am-1pm  
Extended Care available until 4:30pm  
Preschool@teesd.org  
619-286-2999



**We'd love to share your  
simcha!**

Do you have an engagement, a wedding or a new baby in your family? Share your happiness with the congregation! Please email the information to [publicity@teesd.org](mailto:publicity@teesd.org) to be included in an upcoming bulletin.

In our Sanctuary there are two special and always visible means of acknowledging those we wish to honor and those we wish to remember: Leaves on the Tree of Life and Plaques on the Memorial Board. In addition, the Temple has cemetery plots for sale in the Mt. Sinai II lawn at El Camino Memorial Park. For more information please call the office at 619-286-2555.



## CARS

Temple Emanu-El has signed on as a partner of CARS, a nonprofit organization that takes donated vehicles and returns 80% of the proceeds to the organization of the donor's choice. CARS was founded in 2003 and has donated millions of dollars to nonprofits across the country.

The process is simple: log on to [careasy.com](http://careasy.com) and follow the three easy steps. You can select Temple Emanu-El as your nonprofit of choice, provide the information about your vehicle and arrange for CARS to pick up at your office or home. They will work around your schedule and take care of all the paperwork. There is no cost to the donor and donations are tax deductible.

If you or someone you know has a vehicle they would like to donate, visit [careasy.org](http://careasy.org) to learn more about the process or contact anyone at the Temple office for assistance.

Thanks for your support.



## 988 SUICIDE PREVENTION HOTLINE

988 is the new three digit code to route callers to the National Suicide Prevention Lifeline for support 24 hours a day, 7 days a week. Please remember this number if you or someone you know is in crisis. There is no charge. Call or text 988, or chat at [988lifeline.org](http://988lifeline.org) from anywhere in the country.

### Morgan Stanley



**Phil Bresnick**

Financial Planning Specialist  
Senior Vice President | Financial Advisor  
5464 Grossmont Center Drive, Suite 200  
La Mesa, CA 91942

**619-668-4334**

[philip.bresnick@morganstanley.com](mailto:philip.bresnick@morganstanley.com)  
[www.morganstanleyfa.com/bresnickbresnick](http://www.morganstanleyfa.com/bresnickbresnick)  
CA Insurance Lic. #0A05261 / NMLS #14-01662

© 2021 Morgan Stanley Smith Barney LLC. Member SIPC.  
BC007 CRC 3881411 10/21



DIAMONDS ♦ GEMS ♦ FINE JEWELRY ♦ CUSTOM DESIGN



**MATT MEIS**  
FINE CUSTOM JEWELRY

SPECIALIZING IN CUSTOM DESIGN  
WEDDING, ANNIVERSARY AND  
SPECIAL OCCASION FINE JEWELRY  
AND JEWELRY REPAIR



BY APPOINTMENT  
IN THE CONVENIENCE  
OF YOUR HOME OR OFFICE

(619) 218-1319 ♦ mattmeis.com ♦ matt@mattmeis.com



Proudly Serving Jewish Families For  
Over 46 Years

**Am Israel Mortuary**  
San Diego's "Only" Jewish Mortuary  
Family Owned and Operated  
For Three Generations

619-583-8850

www.AmIsraelMortuary.com

**LGC**

**LINCOLN  
GUSTAFSON  
& CERCOS, LLP**

**Thomas J. Lincoln**  
Attorney at Law  
tlincoln@lgclawoffice.com

**California**  
(619) 233-1150  
550 West C Street  
Ste # 1400  
San Diego, CA 92101

**Nevada**  
(702) 257-1997  
3960 Howard Hughes Parkway  
Ste # 200  
Las Vegas, NV 89169

**Arizona**  
(602) 606-5735  
2415 E. Camelback Rd.  
Ste # 700  
Phoenix, AZ 85016

**ESSENTIAL  
PROPERTY  
MANAGEMENT**  
Platinum Service



**JUDE FOX**  
PROPERTY MANAGER

619.861.8852  
JAMWITHAFOX@GMAIL.COM

DRE# 01970577



**HA-SOFER • THE SCRIBE**

is published monthly by Temple Emanu-El

6299 Capri Drive • San Diego, CA 92120

**BULLETIN DEADLINES**

April 5 for the May issue

May 5 for the June issue

**Gail L. Braverman, MA, MFT**  
*Individual, Couples and Family Counseling*

License #35281

5100 Marlborough Drive  
San Diego, California 92116

**(619) 282-4730**



# April 2024 Adar II— Nissan 5784

SUNDAY	MONDAY	TUESDAY	WEDNESDAY	THURSDAY	FRIDAY	SATURDAY
	April 1 • 22 Adar II	April 2 • 23 Adar II	April 3 • 24 Adar II	April 4 • 25 Adar II	April 5 • 26 Adar II	April 6 • 27 Adar II
	Mah Jongg 1:30 pm Preschool Camp	Drum Circle 3 pm No Community Jewish High Preschool Camp	Coffee with the Rabbi 11 am Preschool Camp No Torah Hebrew Classes	Preschool Camp Bridge with Benj 12:30 pm Youth Choir 5 pm Adult Choir 6 pm	Preschool Camp Shabbat Service 6 pm	Torah Study 9 am Shabbat Morning Service 10:30 am
April 7 • 28 Adar II	April 8 • 29 Adar II	April 9 • 1 Nissan	April 10 • 2 Nissan	April 11 • 3 Nissan	April 12 • 4 Nissan	April 13 • 5 Nissan
NO Torah School Intro to Judaism 10 am NO Adult B'Nai Mitzvah Class	Mah Jongg 1:30 pm	Community Jewish High 6 pm	Coffee with the Rabbi 11 am Torah Hebrew Classes 4 pm & 5 pm Torah for the Table 6 pm	Bridge with Benj 12:30 pm Adult Theatre Rehearsal 5 pm Torah School Teacher Meeting 5:30 pm	Shabbat Service 6 pm	Torah Study 9 am Shabbaton Shabbat Morning Service 10:30 am Adult Ed-Movie Night The Jewish Cardinal 7 pm
April 14 • 6 Nissan	April 15 • 7 Nissan	April 16 • 8 Nissan	April 17 • 9 Nissan	April 18 • 10 Nissan	April 19 • 11 Nissan	April 20 • 12 Nissan
Torah School 9 am Intro to Judaism 10 am Adult B'Nai Mitzvah Class 2 pm Adult Ed-Practical Tools 2 pm Gun Safety & Awareness 2 pm	Mah Jongg 1:30 pm	Community Jewish High 6 pm	Coffee with the Rabbi 11 am Torah Hebrew Classes 4 pm & 5 pm WTEESD Women's Seder 6:15 pm	Bridge with Benj 12:30 pm Children's Choir Rehearsal 5 pm Adult Choir Rehearsal 6 pm	Teacher Appreciation Family Shabbat Service 6 pm	Torah Study 9 am Shabbat Morning Service 10:30 am
April 21 • 13 Nissan	April 22 • 14 Nissan	April 23 • 15 Nissan	April 24 • 16 Nissan	April 25 • 17 Nissan	April 26 • 18 Nissan	April 27 • 19 Nissan
Torah School 9 am Intro to Judaism 10 am Adult B'Nai Mitzvah Class 2 pm Adult Ed-Practical Tools 2 pm Gun Safety & Awareness 2 pm	Erev Passover Office & Preschool Closed at 1 pm NO Mah Jongg	Office and Preschool Closed Pesach Festival Service 10 am NO Community Jewish High Congregational Seder 5 pm	Coffee with the Rabbi 11 am NO Torah Hebrew Classes	Bridge with Benj 12:30 pm Band Rehearsal 5 pm	Shabbat Service 6 pm	Torah Study 9 am Shabbat Morning Service 10:30 am
April 28 • 20 Nissan	April 29 • 21 Nissan	April 30 • 22 Nissan				
NO Torah School NO Adult B'Nai Mitzvah Class	Office and Preschool Closed Pesach Concluding Service 10 am Yizkor NO Mah Jongg	Community Jewish High 6 pm				



President  
1st Vice Pres  
Treasurer  
Financial Sec/2nd VP  
Recording Secretary  
Immed. Past Pres  
Immed. Past Pres  
Executive Past Pres

Matt Meis  
Stefani Lenett  
Jeff Schindler  
Barbara Braasch  
Alec Irwin  
Marc Glazer  
Cathi Marx  
Eric Rosenzweig

Senior Rabbi  
Associate Rabbi  
Executive Director  
Rabbi Emeritus  
Founding Rabbi  
Preschool Director  
Webmaster  
Bulletin Contact

Devorah Marcus  
Benj Fried  
Shaun Copans  
Martin S. Lawson  
Morton J. Cohn z"l  
Janet Arkin  
Alec Irwin  
Publicity Committee

rabbi@teesd.org  
rabbibenj@teesd.org  
scopans@teesd.org  
  
jarkin@teesd.org  
publicity@teesd.org

