



# HA-SOFER ✦ THE SCRIBE

Adar—Nissan 5785

March 2025

TEMPLE EMANU-EL • 6299 CAPRI DRIVE, SAN DIEGO, CA 92120-4632 • (619) 286-2555 •

Join us for  
Temple Emanu-El's

**PURIM**

**CARNIVAL**

Sunday, March 9  
11am to 1pm

Our annual carnival features games, prizes, a petting zoo, pony rides, facepainting, a costume contest, food, drink(s), and fun for the whole family!

Save time by purchasing tickets and wristbands online.

Tickets (one ticket = \$5)

- Taco Plate with a Non-Alcoholic Drink - Two Tickets
- Adult Beverage - One Ticket
- Two Non-Alcoholic Drinks - One Ticket

Wristbands (one wristband = \$25)

- Wristbands provide unlimited access to rides and games for children only.

**General admission to the carnival is free.**



**Saturday, March 1**  
Shabbat Morning Service 10:30 am  
**Madeline Gershwin Bat Mitzvah**  
T'rumah, Exodus 25:1-27:19  
II Kings 12:5-16

**Friday, March 7**  
SanETY Shabbat Service 6 pm

**Saturday, March 8**  
Shabbat Service 10:30 am  
T'tzaveh, Exodus 27:20-30:10  
Esther 7:1-10; 8:15-17

**Friday, March 14**  
Shabbat Service 6 pm

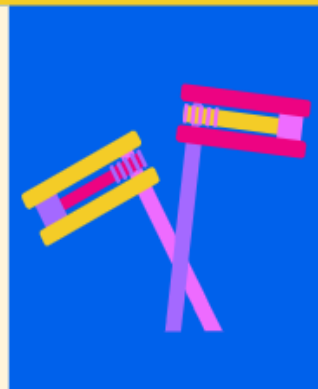
**Saturday, March 15**  
Shabbat Morning Service 10:30 am  
Ki Tisa, Exodus 30:11-34:35  
I Kings 18:1-39

**Friday, March 21**  
Shabbat Service 6 pm

**Saturday, March 22**  
Shabbat Morning Service 10:30 am  
Vayak'heil, Exodus 35:1-38:20  
Ezekiel 36:22-36

**Friday, March 28**  
Band Shabbat 6 pm

**Saturday, March 29**  
Shabbat Morning Service 10:30 am  
P'kudei, Exodus 38:21-40:38  
Ezekiel 45:16-25



## From Our Temple President

by Matt Meis



As we look forward to celebrating Purim, I believe it is important to think about how the themes surrounding Purim interweave so beautifully with our Reform Jewish commitment to tikkun olam (repairing the world). While Purim commemorates our Jewish survival and triumph over evil, tikkun olam calls us to engage in the ongoing and active work of repairing our world. In the Purim story, Esther shows us what tikkun olam looks like in practice - she used her position of privilege to speak truth to power and protect the vulnerable. Just as Esther had to "unmask" herself to save her people, our observance of Purim challenges us to remove our own masks and confront injustice in our world. When we fulfill Purim's mitzvot of giving gifts to friends (mishloach manot) and charity to those in need (matanot l'evyonim), we engage in small but meaningful acts of tikkun olam. These practices remind us that repairing our world happens both through bold actions like Esther's and through daily acts of generosity and justice. The raucous joy of Purim exists alongside its serious message - that each of us, like Esther, has the capacity and responsibility to make our world more whole.

## Shaun Speaks...



Shaun Copans,  
Executive Director

Temple Emanu-El is about to pass a financial milestone that I wanted to bring to everyone's attention; our combined endowment fund assets have almost reached the \$2,000,000 mark!

Temple Emanu-El's first endowment fund, named in honor of Rabbi Marty and Anita Lawson, was established in 2019. In 2020, an endowment fund was created for the Torah School, followed by the Preschool endowment a year later and finally, in 2022, the Operations & Facilities endowment. The funds are managed by the Jewish Community Foundation, under the advisement of the Temple's investment and finance committees.

For those not aware, an endowment is a long-term savings fund only available for nonprofit organizations. The funds are invested in assets like stocks and bonds and a portion of the interest earned is returned (a distribution) to the organization each year. The Board of Directors is responsible for determining how the distribution income is used.

The growth of these funds is a testament to our incredibly supportive and generous community. With your continued support, we hope to reach our goal of \$10 million in combined endowment fund assets, to ensure the long-term health of Temple Emanu-El, by 2035.



ENDOWMENT  
FUND



# Preschool Summer Camp



Play-based program with dedicated staff, themed session and water days!



\$500  
2-Week  
Sessions

JUNE 2-  
JULY 18

Core Program from 8:30am-1pm  
Extended Care available until 4:30pm  
Preschool@teesd.org  
619-286-2999

## Musical Musings from Michelle Jirkovsky—Music Director The Joy of Purim and the Power of Music

As we welcome the month of March, excitement is building for one of the most joyful celebrations in the Jewish calendar—**Purim**! At the heart of our festivities is the **Purim Spiel**, a time-honored tradition that brings the story of Esther to life through music, laughter, and community spirit. Whether it's a classic retelling or a creative new take, the Spiel reminds us that storytelling, especially through music, is a vital way we pass down our traditions.



Music plays an essential role in Purim. The melodies of the Megillah reading, the raucous sound of groggers, and, of course, the festive songs of our Purim Spiel create an atmosphere of joy and unity. Singing together strengthens our connection—not only to the story of Esther, but also to each other. And what better way to ensure the next generation learns these traditions than by supporting **Jewish camp experiences**, where our youth immerse themselves in Jewish music, customs, and culture?

This is where **hamentashen** come in! Our annual **hamentashen sale** directly supports our synagogue's **campership scholarships**, helping our students attend Jewish summer camp—the very best place to learn the melodies, prayers, and traditions that keep our heritage alive. So when you purchase these delicious treats, you're not just indulging in a Purim favorite—you're investing in our community's future!

Let's celebrate Purim with **music, mitzvot, and a plate full of hamentashen**. Thank you for your support. On Thursday, March 13, the Purim festivities will begin with a pizza party at 5:30 pm. The Purim Spiel performance will start at 6 pm, immediately followed by the Megillah Reading and text study. We hope to see you there!

**Chag Purim Sameach!**







## Helping to Repair the World

Your generous donations to Temple Emanu-El's Social Action Fund are used to serve the needs of the community, locally, nationally and internationally.

In February, funds were sent to The Lucky Duck Foundation ([luckyduckfoundation.org](http://luckyduckfoundation.org)), which works in San Diego County to prevent and alleviate the suffering from homelessness. Their vision is to have San Diego County be a national model to address homelessness by applying leadership, expertise, accountability and sound business principles. Their co-founders generously match donations up to \$1.5 million annually.

In March, we will allocate money to Steppingstone of San Diego. Founded in 1976, Steppingstone ([steppingstonesd.org](http://steppingstonesd.org)) has provided both outpatient and residential treatment for people with alcohol and drug dependence problems. Their clients often have other medical and psychiatric conditions that interact and affect their addiction. Primarily they serve the LGBTQ community but are open to everyone.

The Social Action Committee carefully screens all recipients to make sure money you donate to the Social Action Fund to continue the work of tikkun olam is spent wisely. We appreciate your donations, large or small, to help with this work.

## **Temple Emanu-El's Annual Spring Fundraiser Back To The Future, May 10, 2025 Opportunity Drawing 2025**

You will be receiving your opportunity drawing tickets in the mail in April.

This year's suggested donation is \$10 per ticket.

Increase your odds of winning and buy 11 tickets for \$100.

When you receive them please return them promptly to be sure you are entered in the drawing!

### **Early Bird Prizes**

Two prizes of \$180 and \$360 each will be awarded for entries returned by April 25, 2025.

### **Grand Prize**

\$1800 will be awarded at this year's fundraiser on May 10, 2025.

You need not be present to win a prize.

A complete set of the rules will be available at the Temple office.

If you have questions or would like more tickets, please call us at (619) 286-2555.





## Adult Education

### Torah for the Table - Saucy Women of the Torah

Torah for the Table is a series that combines Jewish learning and food! At each session, Rabbi Devorah will lead a discussion about a different woman, while chef Barry Lander prepares a four-course meal related to their story. What better way to celebrate a historic year for women than an examination of the Women of the Torah along with menus that are as saucy as many of our heroines' stories. The cost is \$36 for a class. To register please go to our Temple website: [teesd.org](http://teesd.org).

The remaining classes will be held at the Temple as follows:

**Wednesday, March 12**

**Wednesday, April 16 (rescheduled from April 9)**

**Wednesday, May 21 (rescheduled from May 14)**

**Wednesday, June 11**



## Adult Education



Supporting Lifelong Jewish Learning

Picturing Prejudice: The History of Antisemitism Through Film

### ***Braids (Tzamot)***

Saturday, March 1, 7 pm

Temple Sanctuary



Based on a true story, *Braids* tells the tale of So'ad, a fourteen-year-old Jewish girl imprisoned by the Iraqi government in 1947 for her participation in the Zionist movement. The film illuminates a complex and sensitive period of Jewish life in Iraq when Jews felt their security threatened as antisemitism surfaced with the growth of Zionism. Jailed for three years, So'ad joined other political prisoners in a campaign of disobedience until Iraq opened its gates in 1950 and allowed Jews to emigrate to Israel.

The movie, directed by Yitzhak Halutzi, was made in Israel in 1989.

Laurie Baron will introduce the film and lead a discussion of it after the screening.

There will be a bring your own dinner at 6pm in the Social Hall.

\*\*\*\*

#### **Torah Study**

**Saturday mornings—9:00 am In Person and on Zoom—**

An in-depth study of Torah portions and commentary. Come in person or connect from home. Zoom links will be provided in the Temple's weekly emails.

\*\*\*\*

#### **Coffee with the Rabbi**

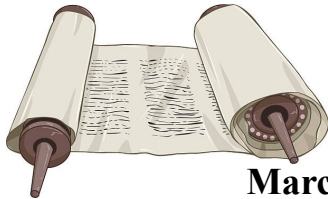
**Wednesdays, 11 am In Person and on Zoom**

Drop in when you can for an informal discussion on current events. No sign up, no charge and no preparation is needed – just an interest in Jewish learning.

\*\*\*\*

*The Adult Education Fund supports life-long learning at Temple Emanu-El. We appreciate contributions of any amount to further our efforts.*





## Torah School March Schedule

**March 2** — Torah School 9 am to 12 pm Pizza Lunch 12 pm  
Parent Hamantashen Baking 9:15 am to 11 am

**March 5** — Hebrew Classes Online 4:30 pm, In Person 5:30 pm

**March 9** — Daylight Savings Begins Spring Forward

Torah School 9 am to 11 am Early Pick-up at 11 am No Pizza Lunch No Clubs

**PURIM CARNIVAL 11 am to 1 pm**

**March 12**— Hebrew Classes Online 4:30 pm, In Person 5:30 pm

**March 14-16** — **FAMILY CAMP**

**March 16** — **NO** Torah School

**March 19** — Hebrew Classes Online 4:30 pm, In Person 5:30 pm

**March 23** — Torah School 9 am to 12 pm Pizza Lunch 12 pm

**March 26** — Hebrew Classes Online 4:30 pm, In Person 5:30 pm

**March 30**—Torah School 9 am to 12 pm Pizza Lunch 12 pm

## *Drum Circle—Tuesday, March 4, 3 pm*



In February, our synagogue's Drum Circle took on a unique and exciting twist under the guidance of Temple Emanu-El's talented Music Director, Michelle Jirkovsky. While our leader Ira Moskowitz was enjoying a well-deserved vacation, Michelle brought her own flair and creativity to the session, making it a memorable experience for all participants.

We began with a warm-up that introduced us to the diverse sounds our drums could produce. Michelle guided us in exploring the different tones created by striking the drums with various parts of our hands—using the flat of our hands, palms, fingers and even the sides of our thumbs. We also experimented with using other objects to create unique sounds, broadening our understanding of the instrument's versatility.

The session then moved into an engaging exercise where each participant drummed a distinct rhythm. Together, these rhythms interwove to form a rich tapestry of sound, allowing us to focus on the interplay of different tempos and the beauty of collective music-making.

A highlight of this meeting was using our drumming to tell a story, bringing to life the week's Torah portion. We imagined the soundscape of the Jews as slaves in Egypt, the frantic rush to cross the Reed Sea and the joyous celebration of the Israelites' newfound freedom. This creative exercise not only deepened our connection to the Torah but also demonstrated the power of music to convey emotion and narrative.

We concluded with an exploration of volume, performing two final rumbles that played with dynamics and intensity. It was a fun and refreshing change of pace, and while we eagerly anticipate Ira's return, we are grateful for the new perspectives Michelle brought to our Circle.

Whether you're a seasoned drummer or a curious newcomer, we welcome you to join our next Drum Circle on Tuesday, March 4, 3 pm. There is a place for you in our rhythmic community. Come and be part of the beat!

For any questions or to get on the list for reminder emails, please contact Bonnie Baron at [bonniebaron@gmail.com](mailto:bonniebaron@gmail.com).





## Spring Training, Spring Cleaning and...Spring forward!

Spring brings new beginnings.

“The past is the outer environment and so is the future. All we can do is take care of right now!” Dr. Abraham Low

Our Recovery International Board President noted in her *Newsweek* interview in December 2024:

“For those who are committed to change, our program serves as a roadmap to recovery. I didn’t know how to manage stress until I was taught to practice these skills. Recovery is not a quick fix; it’s a journey that requires dedication and consistent effort. Dr. Abraham Low, our founder, emphasized this principle. Over time, participants internalize these skills, helping them address physical challenges like nervous fatigue or anxiety and mental hurdles like fear, anger, or frustration.

For instance, everyday irritations - spilled milk or a stained blouse - can accumulate and leave people feeling overwhelmed. We teach strategies to handle these frustrations, fostering a more peaceful life.”

Make March a time for springing into action!

**Days are longer** - Make them count.

**Get up earlier** - Come to a meeting.

**Time for baseball** - Don’t strike out!



Treat your mental health as a **business**, not as a **game**.

Plan, decide, and act. Come to the meeting at Temple Emanu-El on Thursdays at 10 am in the library.

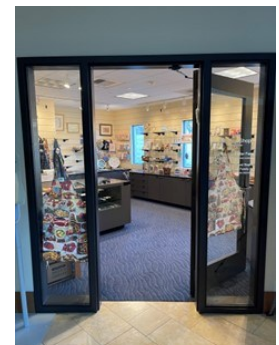
For more information, please see our website, [RecoveryInternational.org](http://RecoveryInternational.org) or contact us at (619) 383-2084 or by email at [SanDiego@RecoveryInternational.org](mailto:SanDiego@RecoveryInternational.org).

## Claire Handler Gift Shop

Our Temple Gift Shop, located in the lobby of the Sanctuary building, is a perfect place to find a wonderful variety of items for all occasions. Whether you are looking for something new to enhance your holiday celebrations or a gift to express appreciation to a host or for someone establishing a new home, you will find a great selection. Right now, we have new seder plates, cooking kits, mezzuzot, Shabbat candlesticks, driplless candles, and so much more.

The Gift Shop is available any time the Temple office is open – just come into the office for assistance.

We are looking for a few more volunteers. Training is provided, and the schedule is flexible. Contact Natalie Fritz at [office@teesd.org](mailto:office@teesd.org) for more details.



# Safety/Security Committee

By Greg Houska, *Chair*

This month, I am sharing a letter written by George Washington to the Touro Synagogue congregation of Newport, Rhode Island in 1790. It is a reminder that we always had, and continue to have, strong support from our fellow Americans:

“While I receive, with much satisfaction, your Address replete with expressions of affection and esteem; I rejoice in the opportunity of assuring you that I shall always retain a grateful remembrance of the cordial welcome I experienced in my visit to Newport, from all classes of Citizens.

The reflection on the days of difficulty and danger, which are past, is rendered the more sweet from a consciousness that they are succeeded by days of uncommon prosperity and security. If we have the wisdom to make the best use of the advantages with which we are now favored, we cannot fail, under the just administration of a good Government, to become a great and a happy people.

The Citizens of the United States of America have a right to applaud themselves for having given to mankind examples of an enlarged and liberal policy: a policy worthy of imitation. All possess alike liberty of conscience and immunities of citizenship. It is now no more that toleration is spoken of, as if it was by the indulgence of one class of people, that another enjoyed the exercise of their inherent natural rights. For happily, the Government of the United States, which gives to bigotry no sanction, to persecution no assistance, requires only that they who live under its protection should demean themselves as good citizens, in giving it on all occasions their effectual support.

It would be inconsistent with the frankness of my character not to avow that I am pleased with your favorable opinion of my Administration, and fervent wishes for my felicity. May the Children of the Stock of Abraham, who dwell in this land, continue to merit and enjoy the good will of the other Inhabitants; while everyone shall sit in safety under his own vine and fig tree, and there shall be none to make him afraid. May the father of all mercies scatter light and not darkness in our paths and make us all in our several vocations useful here, and in his own due time and way, everlastingly happy.”



# Contributions

*Contributions received after the first of the month will be published in the next month's bulletin.*

*Commemorate a life cycle event or remember a loved one with a donation to one of the Temple's specially designated funds.*



## BULLETIN DEADLINES

March 5 for the April issue

April 5 for the May issue

### We'd love to share your simcha!

Do you have an engagement, a wedding or a new baby in your family? Share your happiness with the congregation! Please email the information to [publicity@teesd.org](mailto:publicity@teesd.org) to be included in an upcoming bulletin.



# Yahrzeit Observance

*Zecher Tzadik Livracha* – The Memory of the Righteous is a Blessing  
The following yahrzeits will be commemorated at Shabbat services:

## February 28 & March 1

Irving Smith  
Tom Uter  
Henry Witte  
Ellen Crummer Anderson  
Art Bernard  
Arnold Edwin Cowen  
Howard Falberg  
Irwin Mintz  
Jerry Kasner  
Maurice Mintz  
Joyce Rothman  
Margie Salvio  
Elinor Steinberg  
Kitty Wolff  
Olga Poliak  
Seymour Rogal  
Philip Rubin  
Eva Shaffer  
Rose A. Skellenger  
Rose Wagner  
Helen Ariessohn  
Edward Grossberger  
Roberta Naiman  
Gerry Harris  
Lula Nevil  
Samuel Segal  
Esther Smith  
Fanny Ast  
Paul Barron  
Jerry Blum  
James Corbett, Sr.  
Martin Friedenberg  
Irwin Globerson  
Helen Mae Winer  
Irma Seltzer  
Frank Stein  
Suzanne Guzewich  
Carl William Weil  
Bill Musbach  
Rabbi Martin Weiner  
Morris Slep  
Ruth Ackerman  
Martin DeSure  
Mark Faitek  
Hyman Joseph Kaplan  
Sidney Laverson

## March 7 & 8

Rabbi David Lieb  
Jack Abrams  
Goldie Cohen  
Paul Globerson  
Evelyn Silverstein  
Abraham Slep  
Philip Sompolsky  
Debbie Blum  
Marguerite Degan  
Geri Fox  
Roslyn Freedman  
Sidney Goren  
Dena Kissin  
Marvin Oberndorfer  
Bea Pappenheimer  
Bernice Rosen  
Soll Shapiro  
Lillian Tauber  
Sidney Forman  
Henriette Goodwin  
Alvin Korfin  
Lilyan Perlberg  
Milton Roth  
Mildred Bratman  
Susan Brecher  
Nathan Ratner  
Margot Rubin  
Donald Sacks  
Kenneth Siegel  
Sidney Caplin  
Leslie Renee Carter  
Benjamin Parker  
Debbie Berton  
Toby Brewster  
Yrene Bueno  
Arnold Forster  
Irving Hertz  
Annette Niss  
Erwin Schloss  
Bernard Snyder  
Isabel Ast  
Bess Fixler  
Howard Weisman

## March 14 & 15

Malcolm Finkelstein  
Dr. Bernard E. Kole  
Rose Cherry  
Phyllis Hochfeld  
Isadore Lehrman  
Samuel Cantor  
Pat Bloom  
Jeff Cohn  
Andrew Weingarten  
Molly Diamond  
Allen Fischer  
Phillip Moss  
Fay Shorr  
Ed Spilkin  
Phil Fayerman  
Seymour Hoffman  
Abraham Morris Sobo  
Sylvia Asher  
Judith Berkowitz  
John Lupi  
Henry Meyer  
Amy Pollack  
Anna Rubin  
Wayne Wilson  
George Zeidell  
Harry Baker  
Eric Beissinger  
Lillian Dworkin  
Stella Faitek  
Milton Freedman  
Leslie Guttman  
Max Medoff  
Hilda Mervis  
Harriet Newmark  
Irving Norman Rubin  
Leonard Schreiber  
Jack Shumacher  
Betty Stein  
Caterina Scherbaum  
Arnold Singer  
Lynn Luria Sukenick  
Margie Ventura  
Bernard Topf  
Sheila Korn  
Nathan Rubel  
Rudolf Schloss  
Craig Schlotthauer

## March 21 & 22

David Gventer  
Eleanor Laverson  
Bernice Olcott  
John Grady  
Samuel Kastner  
Marion Bucci  
Louis Silverstein  
Connie Mansfield  
Faye A. Eisenberg  
Carol Rubin Kushner  
Murray Goldblatt  
Robert Mayers  
Belle Schuckman  
Harriet Steinberg  
Larry Atherton  
Gertrude Kushner Klein  
Pauline Hirsch  
Barry Epstein  
Eugene Smith  
Wilna Twomey  
Charles Alexander  
Philip Borkat  
Edith Gventer  
Gladys Marco  
Sam Ackerman  
Martha Darling  
Reba Dresnin Epstein  
Sidney Kaiser  
Frank Marco  
Phyllis Goodman  
Frank Marco  
Mattie Mosenson  
Jeff Silvers  
Thomas Musbach  
Dr. Erving Polster  
Maurice LeCover  
Joseph J. Gallen  
Gladys Marco  
Harold Rutsky  
Rose Kirche  
Gertrude Lieberman  
Lillian Persky  
George Segal  
Julia Segal

## March 28 & 29

Fredrick Cauer  
Frank Korfin  
Arthur Bloomfield  
Samuel M. Cohen  
Marilyn Dunn  
Burton Goldberg  
Jeffrey Heilbrunn  
Julia Winsberg  
Gerald Agranove  
Fanny Copans  
Sondra Glazer  
Ben Fishman  
Yehuda Ben-Yehuda  
Irving Blitz  
Michael Cooper  
Zella Joy Esrock  
Joy LeBus  
Mysore Krishnamurthy  
Faye Penn  
Hella Steinberg  
Philip Pekofsky  
Sidney Smith  
Lou Lipson  
Dr. John Work  
Evelyn Herzfeld  
Connie Adelman  
Ron Berman  
Lottie Birnbaum  
Rudolph Brill  
Philip Fischer  
Seymour Reichbart  
Rabbi Isaac Mayer Wise  
Maurice Beckerman  
Blanche Green  
Philip Ehrlich  
Phyllis Spiegler  
Jane Stein  
Richard Wolfe



# In Our Temple Emanu-El Family

## MARCH BIRTHDAYS

3/1	Donald Davidson Ezra Le Aran Sadja Paul Schulman Blake Bryan David Loewenstein	3/7	Preston Lange Sarah Lin Phinneas Seldin	3/15	Brett Parker Alexandra Seldin	3/24	Mary Epsten Phyllis Irwin Elijah Lyon
3/2	Pam Mittleman Noa de la Torre	3/8	Myles Kindel	3/16	Jade Karel Zachary Palasnick	3/25	Lydia Ponomarenko Harris Steinberg Abigail Weissman
3/3	David Cohn Charles Jirkovsky Star Laddon Yonatan Mashal Micky Witztum	3/9	Nicholas Celano Emily Goldenberg Diana Mikhailova	3/17	Andrew Siegel Izzy Falk	3/26	Daniel Cohen Sheryl Feinberg Briana Ghitman Stella Jacob Amy Patashnik Rebecca Schonhoff
3/5	Rebecca Fowler Nancy Herzfeld-Pipkin Kennedy Lin Alan Medoff Stella Reytblat Sandy Rosenthal	3/10	Haley Copans Lola Rodman Renee Zoffel	3/18	Lisa Busalacchi	3/27	Michelle Wasserman Joshua Silverstein Dov Clavell Brooklyn McColister
3/6	Lily Brown Cole Peterson Laurie Spiegler Bonnie Lurer	3/11	Craig Misrach Shari Ressel Lillee Dunkle	3/19	Brian Cane Joaquin Cuevas Katya Cuevas Eric Gross Laura Karel Lisa Shuman	3/28	Sunny Borkat Byrne Eger Kathryn F. Witztum
3/7	Janet Arkin Meredith Lange	3/12	Joe Aiello Lee Ben-Yehuda Robbie Sommer Joni Marco	3/20	Ellen Kagan Janie Regier Sharon Snyder Benjamin Stone	3/29	Marc Mann Brian Hazell Howard Kugler Bill Seager Eve Socol
		3/13	Hanna Fox Lynn Grady Elizabeth Eastman	3/21	Stan Mayer Judy Medoff Scott Musicant	3/31	Bram Goldstein
		3/14	Ellen Goren Dana Quittner Taylor Cabacungan Andreas Freund	3/22	Len Berger Leo Svet Max Svet Bram Goldstein		
		3/15	Raul Clavell				



## MARCH ANNIVERSARIES

3/7	John and Carrie Mayers	3/23	Charlie and Connie Pinkus
3/8	Frank and Jessica Teplin	3/24	Andy and Theresa Gellens Ron and Cathi Marx
3/10	Vadim and Wendy Ponomarenko	3/25	Robbie and Danny Bailund
3/14	Shaun and Keri Copans Brandon and Linda Sand	3/26	Adam and Madison Bucci
3/16	Marty and Roz Freedman	3/28	Lev and Tamara Tseselskaya
3/19	Brian and Janine Cane David and Rica Cherrick	3/30	Marc and Janie Regier



Temple members who are able to go above and beyond the standard Temple dues requirement enable us to continue our high standard of services and programs for all members, regardless of means. Please consider joining at one of the following levels:

## Chai Circle



All levels of Chai Circle and Life Membership will have their names published at High Holy Days and in HaSofer (The Scribe). For more information about our programs, please call the Temple office at (619) 286-2555.

## Life Membership



## Add Your Strength to Ours!

Below is a list of contacts for committees, projects and other ways to become more involved in the life of Temple EmanuEl. Please reach out to any of these groups to learn more about their work, and how you can become involved.

- **Adult Education**      [adulthood@teesd.org](mailto:adulthood@teesd.org)  
Rabbi Benj Fried      (619) 286-2555
- **Advocacy**      [advocacy@teesd.org](mailto:advocacy@teesd.org)  
Barbara Learner  
Janice Steinberg
- **Budget and Finance**      [financecommittee@teesd.org](mailto:financecommittee@teesd.org)
- **Caring Community**      [caringcom@teesd.org](mailto:caringcom@teesd.org)
- **Endowment**      [endowment@teesd.org](mailto:endowment@teesd.org)  
Bob Rubenstein
- **Facilities**      [facilities@teesd.org](mailto:facilities@teesd.org)  
Marc Glazer
- **Library**      [office@teesd.org](mailto:office@teesd.org)
- **Membership**      [membership@teesd.org](mailto:membership@teesd.org)  
Erica Whinston
- **Mental Health**      [mentalhealthcom@teesd.org](mailto:mentalhealthcom@teesd.org)  
Marie Raftery
- **Mi Shebeirach Tapestry**      [tapestry@teesd.org](mailto:tapestry@teesd.org)  
Claire Fritz
- **Preschool**      [preschool@teesd.org](mailto:preschool@teesd.org)
- **Publicity**      [publicity@teesd.org](mailto:publicity@teesd.org)
- **Safety/Security**      [security@teesd.org](mailto:security@teesd.org)  
Greg Houska
- **Social Action**      [socialaction@teesd.org](mailto:socialaction@teesd.org)
- **Torah School**      [thscom@teesd.org](mailto:thscom@teesd.org)  
Jane Muschenetz  
Patricia Cardozo
- **Women of Reform Judaism**      [wroj@teesd.org](mailto:wroj@teesd.org)  
Nancy Marcus  
Barbara Chancy
- **Youth**      [rabbibenj@teesd.org](mailto:rabbibenj@teesd.org)  
Rabbi Benj Fried



# Women of Temple Emanu-El

by Barbara Chancy and Nancy Marcus, Co-Presidents



On January 31, we enjoyed a fabulous Sisterhood Shabbat. Our special thanks to Flo Bornstein, who compiled the creative service we used that night, and to Michelle Jirkovsky, who paired the music to the service and added such beautiful artwork to the service book. It was such a special night!

This month we celebrate two events. Purim is March 13. Sisterhood always supports the Purim Carnival. We love how much the kids enjoy the day! Some of us will have been busy helping bake hamantashen. Be sure to buy a box or two to enjoy.

Following Purim, we will get ready to celebrate Passover. On Wednesday, March 26, at 6:15 pm, we are planning a new event. We will be serving snacks and tasting kosher wines. Try some different wines to serve at your own seder or take to someone's home if you will be a guest. More details to come on this special evening.

What is happening in WRJ world? WRJ just held the Social Justice Conference. Much of the discussion was focused on what is happening both here and abroad and what our response will be. At a Conference like this, speakers present different sides of an issue and then Resolutions are created which express the official view of WRJ. We will share this information as it becomes available. Our focus tends to be on how actions will affect women, children, minorities, immigrants and the many subgroups that make up our society. We recognize that not every person will agree with every position but always remember that the positions are trying to capture the essence of the "big idea" for all.

To give you some perspective, in 1919, an early resolution was adopted encouraging every member to subscribe to at least one Jewish periodical. Today it might be a podcast, or an online newspaper, but you get the idea. In 1965, one of WRJ's resolutions supported the rights of LBGT people to be full members of society with all rights and privileges. In the mid-1970's, we supported a resolution to create the Religious Coalition for Reproductive Choice. In May 2000, we marched in the Million Mom March. Our resolution called for keeping guns out of the hands of children and criminals. Does every woman support every resolution? No. But, every woman acknowledges the importance of WRJ speaking out for those whose voices cannot be heard alone.

If we have learned one thing since our founding in 1913, it is that we are Stronger Together.

For more details or questions on these or any of our events, please reach out to us at [wrj@teesd.org](mailto:wrj@teesd.org).



Welcome To Our New Members

Matt Graber  
Steve Lachman



Todah Rabah

To Barbara Pollack for her work on editing the bulletin.

# Condolences

To Barbara and Matt Meis on the death of Barbara's brother,  
**Larry Bruch**

To Mark Kipperman and Judy Hertzberg on the death of their mother,  
**Eleanor Kipperman**



To Shari Ressel on the death of her cousin  
**Roberta Feld**

To Shari Ressel on the death of her mother,  
**Judy Ressel**

To Mel Brav on the death of his wife,  
**Diana Brav**



## Israel Engagement—Enduring Symbol of the Red Anemone

*by Rhonda Amber and Jonathan Licht, Co-Chairs*

There are many symbols that remind all of us of the massacres on October 7. There is the image of the hostage posters, hostage dog-tags, yellow ribbons, blue ribbons, each day wearing the number of days hostages have been in Gaza, and perhaps, a most enduring symbol will be the kalaniyot, כַּלָּנִיּוֹת, the red anemone. The anemone, with its striking red petals, blooms in Israel in late winter and early spring, creating carpets of brilliant color. These blossoms are their most brilliant and dramatic in the Negev where the October 7 tragedy took place.

Months ago, we participated in an event held at “the Hive” at Coastal Roots Farm, Leichtag Foundation, in Encinitas. There we, our granddaughter, age three, and many others, mostly Israeli Americans, made and decorated ceramic versions of the flower. Similar events, making the kalaniyot, were held throughout the Diaspora. If you look for them, you will spot many of them on display.

The blooming of the desert was called Darom Adom, דָרוֹם אָדוֹם, Red South, a festival time describing the region in bloom. Since the cross-border massacre, it symbolizes blood shed onto the ground. Last year's festival was cancelled. This year, the festival is slowly returning and has been renamed Darom BaLev, דָרוֹם בַּלֵב, South in the Heart, which is a more tolerable name.

The red anemone has long been a symbol in many cultures including the Greeks, Christians, Chinese, Japanese and our own. It represents passion, faith and devotion, beauty and renewal. The flower has been used in traditional medicine for its anti-inflammatory and pain-relieving qualities.

The red Anemone have been blooming along the Gaza border despite surrounding turmoil. We should note that the blooming of the flowers does not stop at the border between Israel and Gaza. These flowers are a metaphor for hope and endurance.

We will need all its best qualities for the years to come.

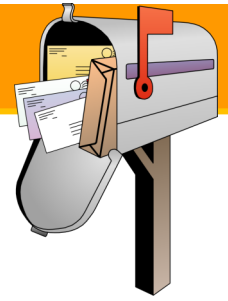


First red anemones in the western Negev. (credit: YITZHAK COHEN PROTECTION OF NATURE)





# Mailbox



On behalf of World Central Kitchen, I want to thank Temple Emanu-El for choosing to donate in support of our work around the globe. We are so grateful for your help as we use the power of food to nourish the world.

Deploying our model of quick action, leveraging local resources and adapting in real time, WCK has provided more than 450 million meals since 2010 in response to humanitarian, climate and community crises across the world.

We're a team of food first responders, mobilizing with the urgency of now to get meals to the people who need them most. We know that a nourishing meal in a time of crisis is so much more than a plate of food – it's hope, it's dignity, and it's a sign that someone cares.

Thank you for your belief and trust in our mission.

Erin Gore, Chief Executive Officer  
World Central Kitchen

Every day, we are inspired by the kindness of supporters like you. Your generosity is the foundation of our success, enabling us to provide nutritious food to thousands of San Diegans each month.

Your thoughtful gift directly supports our core programs, easing the burden on those who must make difficult choices between food and other critical needs like medicine, electricity, transportation or childcare.

When you give to the San Diego Food Bank, you take a significant worry off the plate for individuals and families facing hunger. You're providing the gift of nourishment, and so much more. Your compassion and commitment inspire us, and we are deeply grateful for all you do to help us create a stronger, healthier community.

Thank you for supporting our neighbors in need.

Kristin Wiggins, Vice President of Development  
The Jacobs and Cushman San Diego Food Bank

Your generous contributions to the Social Action Fund make it possible to respond to needs in our community and around the world.

Join our Adult Theatre Troupe for a night of laughter, music, and celebration at Temple Emanu-El's annual Purim Spiel!

Immerse yourself in the joyous spirit of Purim with a spectacular performance that brings the ancient story of Esther to life with a hilarious modern twist. Our talented cast will entertain you with witty dialogue, sing-along songs, and vibrant costumes, ensuring a memorable experience for all ages. Don't miss this festive occasion filled with fun, community, and Purim's timeless message of courage and triumph. Come in costume, bring your friends and family, and be part of a tradition that promises joy and inspiration.

On Thursday, March 13, the Purim festivities will begin with a pizza party at 5:30 pm. The Purim Spiel performance will start at 6 pm, immediately followed by the Megillah Reading and text study. We hope to see you there!





Temple Emanu-El would like to thank the San Diego Jewish Men's Choir who gave a tremendous performance for us in February.

The Choir, is under the musical direction of Ruth Weber and includes our own Temple President, Matt Meis. The concert was well attended and enjoyed by many.

## TORAH READERS WANTED FOR PURIM

We are so excited to celebrate Purim on March 13! One of the commandments of Purim is to hear the Megillah read, and part of our Purim service will be the traditional reading of the Megillah. To make this happen, we need people willing to read from the scroll. If you enjoy reading Torah and want to participate in this sacred mitzvah, please contact Rabbi Benj, and he will set you up with some verses to read. You can chant them in the Purim trope, or you can just read them.



Join us for a day celebrating the best of our Jewish arts, education and cultural world. Tapestry is bringing together speakers from around the globe, scholars bringing the newest conversation in our Jewish world, artists guiding us through their creative process and authors sharing their latest books.

This year, the focus is the vibrant intersection of community, education and Jewish culture with tracks that include Soul, Study and Strength; Contemporary American Jewish Peoplehood; Life in Israel after October 7; Fundamentals of Judaism; Antisemitism and Paving a Path Forward; Holocaust Education and the Future of Remembering the Shoah; and Life, Arts and Culture in and influenced by Israel. The day will feature a choice of topics for each session.

Of particular interest to those in the Emanu-El community is an Interfaith Dialogue: Confronting Antisemitism with participant Rabbi Devorah, Lifelong volunteer and Temple member Marie Raftery will facilitate a panel discussion on the Power of Volunteerism: Connecting to Community and Enriching Lives.

Tapestry will begin at 9 am with a light breakfast and conclude with an ending celebration at 3:30 pm. Lunch will be provided. Price is \$45 per person, or \$36 for JCC members. For a full schedule of all class sessions and registration, please see [lfjcc.org/cjc/tapestry.aspx](http://lfjcc.org/cjc/tapestry.aspx), or call the JCC at (858) 457-3030.



DIAMONDS ♦ GEMS ♦ FINE JEWELRY ♦ CUSTOM DESIGN



**MATT MEIS**  
FINE CUSTOM JEWELRY

SPECIALIZING IN CUSTOM DESIGN  
WEDDING, ANNIVERSARY AND  
SPECIAL OCCASION FINE JEWELRY  
AND JEWELRY REPAIR



BY APPOINTMENT  
IN THE CONVENIENCE  
OF YOUR HOME OR OFFICE

(619) 218-1319 ♦ mattmeis.com ♦ matt@mattmeis.com



Proudly Serving Jewish Families For  
Over 46 Years

**Am Israel Mortuary**  
San Diego's "Only" Jewish Mortuary  
Family Owned and Operated  
For Three Generations

619-583-8850

www.AmIsraelMortuary.com

**LGC**

**LINCOLN  
GUSTAFSON  
& CERCOS, LLP**

**Thomas J. Lincoln**  
Attorney at Law  
tlincoln@lgclawoffice.com

**California**  
(619) 233-1150  
550 West C Street  
Ste # 1400  
San Diego, CA 92101

**Nevada**  
(702) 257-1997  
3960 Howard Hughes Parkway  
Ste # 200  
Las Vegas, NV 89169

**Arizona**  
(602) 606-5735  
2415 E. Camelback Rd.  
Ste # 700  
Phoenix, AZ 85016



**ESSENTIAL  
PROPERTY  
MANAGEMENT**  
Platinum Service

**JUDE FOX**  
PROPERTY MANAGER

619.861.8852  
8504 La Mesa Blvd., La Mesa, CA 91942  
judfoxrealtor@gmail.com  
www.sdlivingrealestate.com/about/jude-fox/  
DRE# 01970577

**Morgan Stanley**



**Phil Bresnick**  
Portfolio Manager  
Senior Vice President | Financial Advisor  
101 West Broadway, Suite 1800  
San Diego, CA 92101  
619-668-4334  
philip.bresnick@morganstanley.com  
advisor.morganstanley.com/the-bresnick-group  
CA Insurance Lic. #0A05261 / NMLS #1401662

© 2024 Morgan Stanley Smith Barney LLC. Member SIPC.  
BC007 CRC 5709123 06/23


**Gail L. Braverman, MA, MFT**  
*Individual, Couples and Family Counseling*

License #35281

(619) 282-4730



# March 2025 Adar—Nissan 5785

SUNDAY	MONDAY	TUESDAY	WEDNESDAY	THURSDAY	FRIDAY	SATURDAY
						March 1 • 1 Adar
						Torah Study 9 am Shabbat Morning Service Madeline Gershwin Bat Mitzvah 10:30 am Adult Ed Movie 7 pm
March 2 • 2 Adar	March 3 • 3 Adar	March 4 • 4 Adar	March 5 • 5 Adar	March 6 • 6 Adar	March 7 • 7 Adar	March 8 • 8 Adar
Torah School 9 am Introduction to Judaism 1 pm Adult B'Nai Mitzvah 2:30 pm	Mah Jongg 1:30 pm	Drum Circle  3 pm Adult Hebrew Classes 5 pm Community Jewish High 6 pm	Coffee with the Rabbi 11 am Torah School Hebrew Classes 4:30, 5:30 pm Purim Spiel Rehearsal 6 pm	Bridge with Benj 12:30 pm Hamantashen Pick up 3 pm—5 pm	SanETY Shabbat 6 pm	Torah Study 9 am Shabbat Morning Service 10:30 am
March 9 • 9 Adar	March 10 • 10 Adar	March 11 • 11 Adar	March 12 • 12 Adar	March 13 • 13 Adar	March 14 • 14 Adar	March 15 • 15 Adar
Daylight Saving Time Torah School 9 am Purim Carnival 11 am Introduction to Judaism 1 pm Adult B'Nai Mitzvah 2:30 pm Purim Spiel Rehearsal 6 pm	Mah Jongg 1:30 pm	Adult Hebrew Classes 5 pm Community Jewish High 6 pm	Coffee with the Rabbi 11 am Torah School Hebrew Classes 4:30, 5:30 pm Navajo Planning Group Meeting 6:30 pm Torah for the Table 6 pm	Bridge with Benj 12:30 pm Dinner 5:30 pm Purim Spiel and Megillah Reading 6 pm	Family Camp Weekend Shabbat Service 6 pm	Torah Study 9 am Shabbat Morning Service 10:30 am Family Camp Weekend
March 16 • 16 Adar	March 17 • 17 Adar	March 18 • 18 Adar	March 19 • 19 Adar	March 20 • 20 Adar	March 21 • 21 Adar	March 22 • 22 Adar
NO Torah School NO Introduction to Judaism NO Adult B'Nai Mitzvah WRJ Theater Outing  Family Camp Weekend	Mah Jongg 1:30 pm	Adult Hebrew Classes 5 pm Community Jewish High 6 pm	Coffee with the Rabbi 11 am Torah School Hebrew Classes 4:30, 5:30 pm	Bridge with Benj 12:30 pm	Shabbat Service 6 pm	Torah Study 9 am Shabbat Morning Service 10:30 am Tough Conversations with Jews 12 pm
March 23 • 23 Adar	March 24 • 24 Adar	March 25 • 25 Adar	March 26 • 26 Adar	March 27 • 27 Adar	28 • 28 Adar	March 29 • 29 Adar
Torah School 9 am Introduction to Judaism 1 pm Adult B'Nai Mitzvah 2:30 pm	Mah Jongg 1:30 pm	NO Adult Hebrew Classes Community Jewish High 6 pm	Coffee with the Rabbi 11 am Torah School Hebrew Classes 4:30, 5:30 pm WTEESD Taste of Passover 6:15 pm	Bridge with Benj 12:30 pm Chai Circle Event 7:30 pm	Band Shabbat Service 6 pm	Torah Study 9 am Shabbat Morning Service 10:30 am Laurie Baron Lecture 6 pm
March 30 • 1 Nissan	March 31 • 2 Nissan					
Torah School 9 am Introduction to Judaism 1 pm Adult B'Nai Mitzvah 2:30 pm	Mah Jongg 1:30 pm					

President  
1st Vice Pres  
Treasurer  
Financial Sec/2nd VP  
Recording Secretary  
Immed. Past Pres  
Immed. Past Pres  
Executive Past Pres

Matt Meis  
Stefani Lenett  
Jeff Schindler  
Barbara Braasch  
Alec Irwin  
Marc Glazer  
Cathi Marx  
Eric Rosenzweig

Senior Rabbi  
Associate Rabbi  
Executive Director  
Rabbi Emeritus  
Founding Rabbi  
Preschool Director  
Bulletin Contact

Devorah Marcus  
Benj Fried  
Shaun Copans  
Martin S. Lawson  
Morton J. Cohn z"l  
Janet Arkin  
Publicity Committee

rabbi@teesd.org  
rabbibenj@teesd.org  
scopans@teesd.org  
  
jarkin@teesd.org  
publicity@teesd.org

